



REPORT

To: Harbour Board

8 November 2007

From: General Manager

Report No: P&H-25-07-F

Subject: Throughput Forecasts, Sullom Voe Terminal
2007 to 2012

1 Introduction

- 1.1 At the last Harbour Board meeting held on 27 September 2007 Members requested that a report be brought forward on the predicted volumes of oil and gas imported and exported via the Jetties at Sullom Voe Terminal.
- 1.2 Figures were obtained from the Terminal on 21 of September 2007 and confirmed as the most up to date. This report is based on these volumes.
- 1.3 Predicted figures in 2006 are also used to show what actually occurred as against what was thought to happen.

2 Throughput Figures, 2007

- 2.1 The figures given are the average barrels of oil per day for the calendar year.
- 2.2 Figures provided in 2007:

	2007	2008	2009	2010	2011	2012
Brent	255,423	211,080	216,582	212,466	209,602	185,779
Schiehallion	55,800	54,800	38,100	65,300	57,800	49,700
Clair	36,158	47,779	54,382	49,392	43,580	43,650
	347,381	313,659	309,064	327,180	310,982	219,129

See Appendix 1.

2.3 Shipping Movements.

Taking section 2.2 into consideration and the average cargo lifting export and import as 600,000 barrels, the number of ships are:

	2007	2008	2009	2010	2011	2012
Brent Export	130	108	110	108	107	95
Clair Export	18	24	27	24	22	22
Schiehallion Import	32	32	22	38	34	29
Schiehallion Export	<u>32</u>	<u>31</u>	<u>22</u>	<u>37</u>	<u>33</u>	<u>29</u>
	212	195	181	207	196	175
Add						
LPG exports	<u>7</u>	<u>10</u>	<u>10</u>	<u>11</u>	<u>11</u>	<u>0</u>
Total Ships	219	205	191	219	207	175

See Appendix 2

2.4 Gross Tonnage.

An average GT for an export vessel is approx. 62,000 for crude, 14,000 for LPG and 75,500 for imports. Times 1,000.

	2007	2008	2009	2010	2011	2012
Total GT, Export	11,160	10,106	9,858	10,478	10,044	9,052
Total GT, LPG	98	140	140	154	154	0
Total GT, Sch. Imports	<u>2,416</u>	<u>2,416</u>	<u>1,661</u>	<u>2,869</u>	<u>2,567</u>	
2,190						
Overall	13,674	12,662	11,659	13,501	12,765	11,242

See Appendix 3

3 Throughput Figures, 2006

3.1 It is of interest to compare section 2 predictions above with those obtained in 2006. Without showing all the calculations again, the total gross tonnage figures are as follows. Times 1,000:

	2007	2008	2009	2010	2011	2012
Total GT Exports	11,220	11,656	10,974	9,734	9,052	7,688
Total GT, LPG	112	84	84	84	0	0
Total GT, Sch. Imports	<u>3,397.5</u>	<u>3,397.5</u>	<u>3,397.5</u>	<u>3,397.5</u>	<u>3,397.5</u>	<u>1,812</u>
Overall	14,729.5	15,137.5	14,455.5	13,215.5	12,449.5	9,500

See Appendix 4

- 3.2 The difference between the two sets of predictions indicate the difficulty in setting charges for Sullom Voe port users. Comparing 2007 with 2006 predictions the 2007 figures are:

	2007	2008	2009	2010	2011	2012	
15.50%	- 7.14%	- 16.35%	- 19.34%	+ 2.12%	+ 2.48%	+	

See Appendix 5

4 2007, Actual Figures

- 4.1 The GT figures for the calendar year up to 30 September 2007 compared to the prediction in 2006 are as follows:

	Actual	Prediction	Variance
Brent Export	4,976,388	5,394,000	-7.7%
Clair Export	745,650	976,500	-23.6%
Schiehallion Export	1,248,773	2,046,000	-39.0%
LPG Export	77,196	84,000	-8.1%
Schiehallion Import	2,203,797	2,548,125	-13.5%

See Appendices 6 & 7

5 Conclusions

- 5.1 It is difficult to predict a dynamic situation such as the offshore production of oil. Operations can be curtailed by any number of reasons not the least being the sheer age of equipment and the effects of severe weather.
- 5.2 Members of the Harbour Board should consider the findings of this report and recommend to the Council how best to proceed when considering port charges for next year and beyond.

6 Financial Implications

- 6.1 There are no direct implications as a result of this report.

7 Links to Corporate Priorities

- 7.1 To sustain harbour operations into the future and co-operate with the oil industry to extend the life of the Terminal as far as is possible.

8 Policy Delegated Authority

- 8.1 The Harbour Board has full delegated authority for the oversight and decision making in respect of the management and operation of the Council's harbour undertakings in accordance with the overall Council policy and the requirements of the Port Marine Safety Code as described in section 16 of the Council's Scheme of Delegation.

- 8.2 However, only the Council can approve the Table of Dues relating to harbour charges.

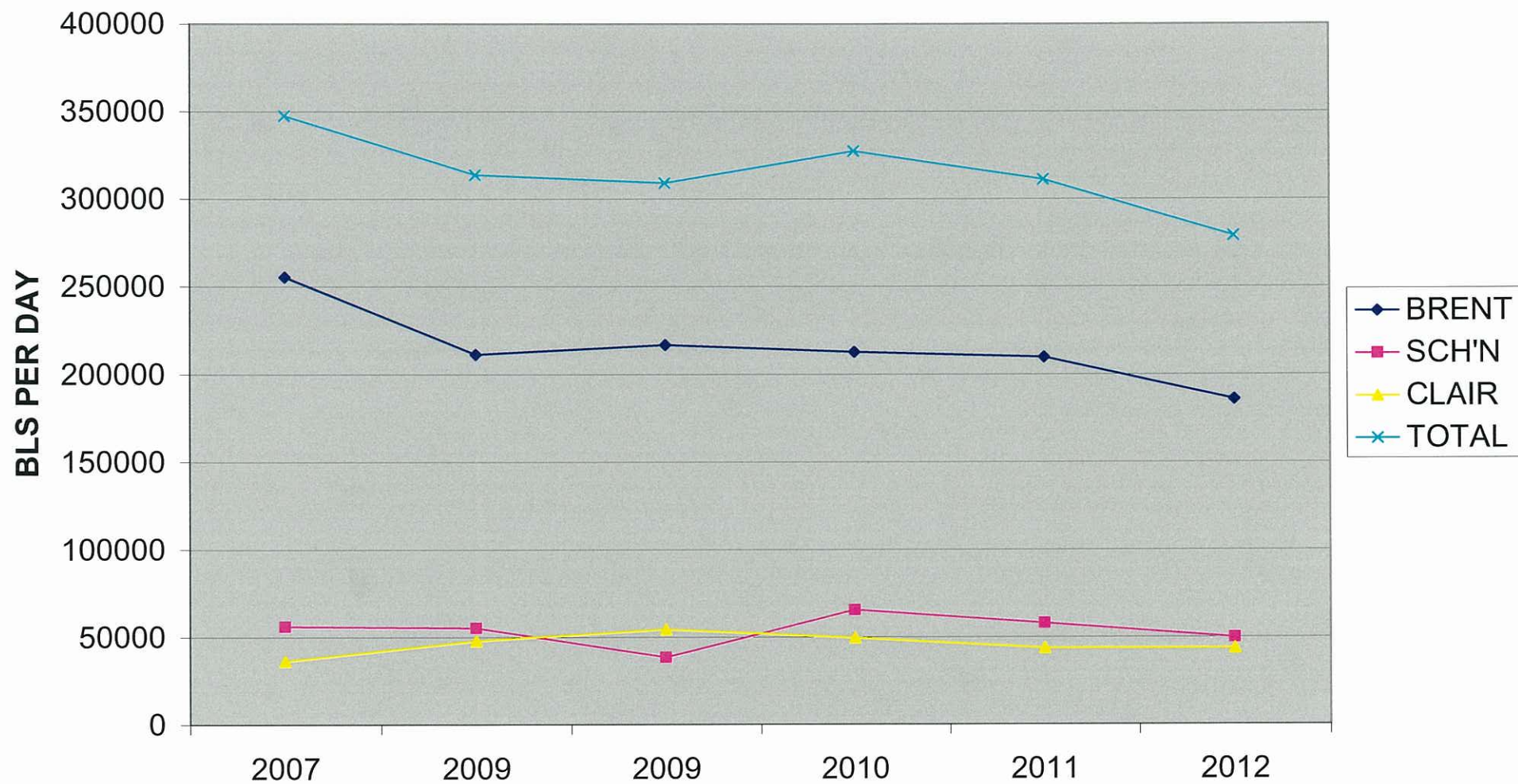
9 Recommendations

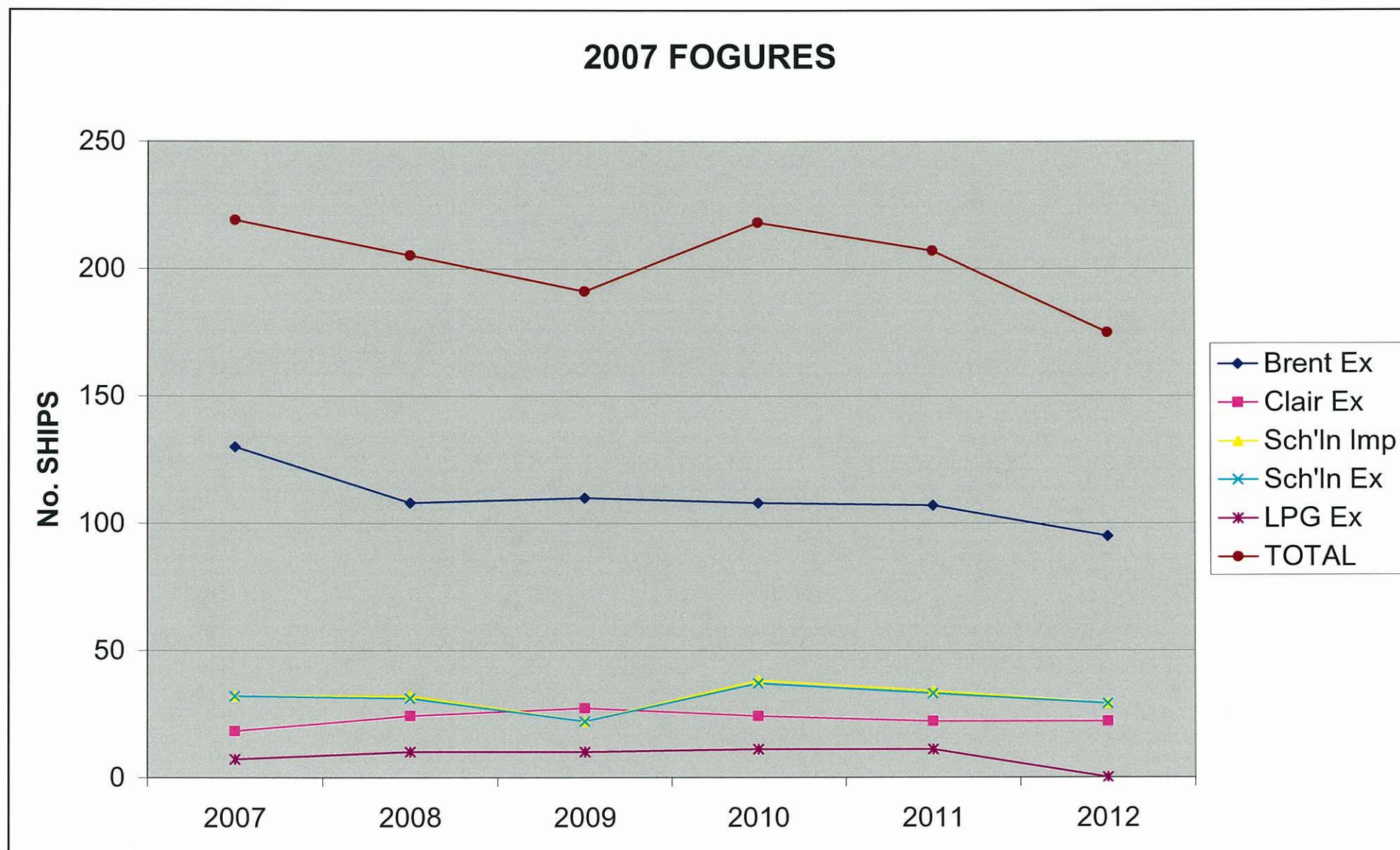
- 9.1 I recommend that the Harbour Board consider the contents of this report and
- 9.2 If necessary, recommend to the Council how to proceed when considering the Table of Dues for 2008/2009 and into the future.

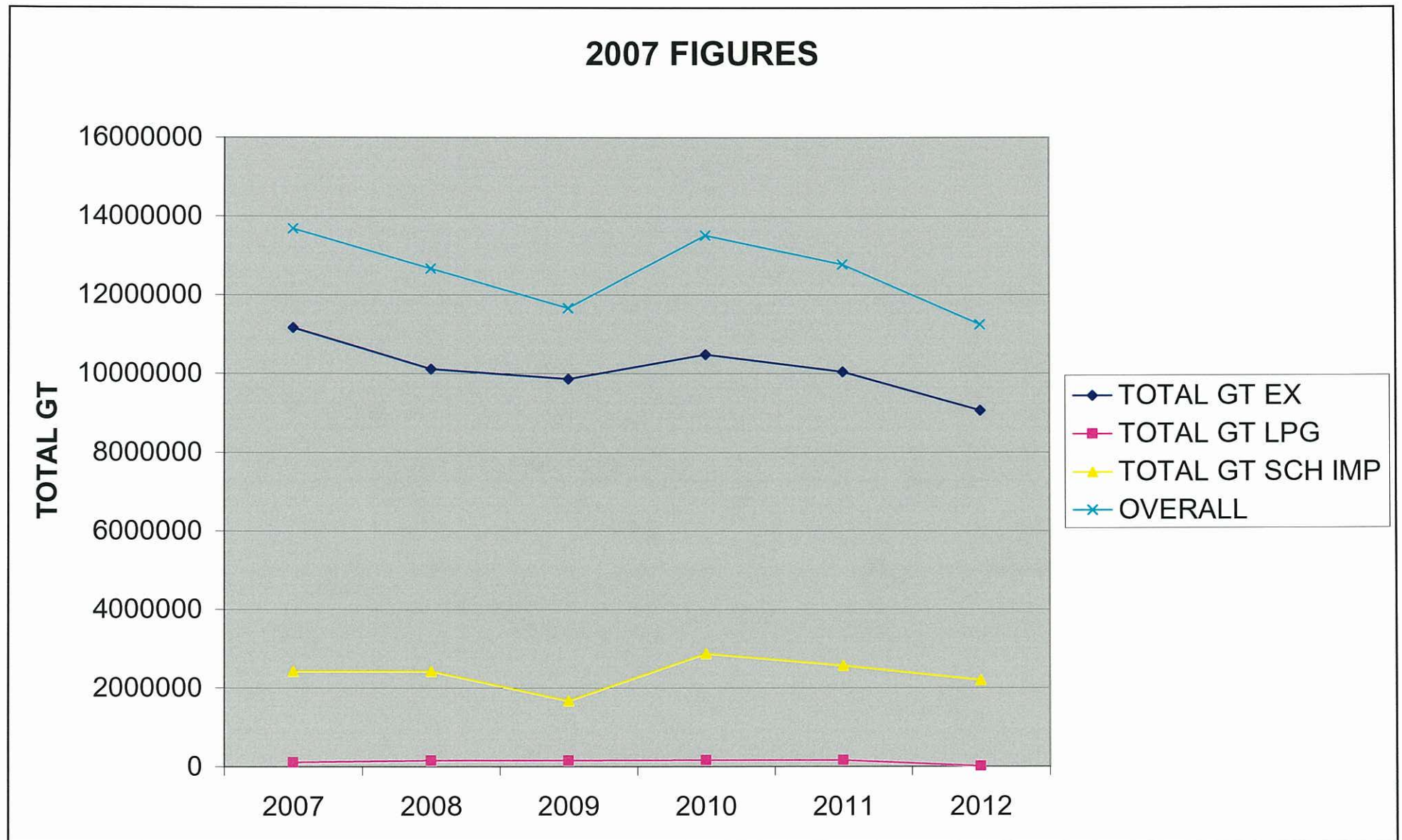
Our Reference: RO-O JTD/SM P&H-25-07-F

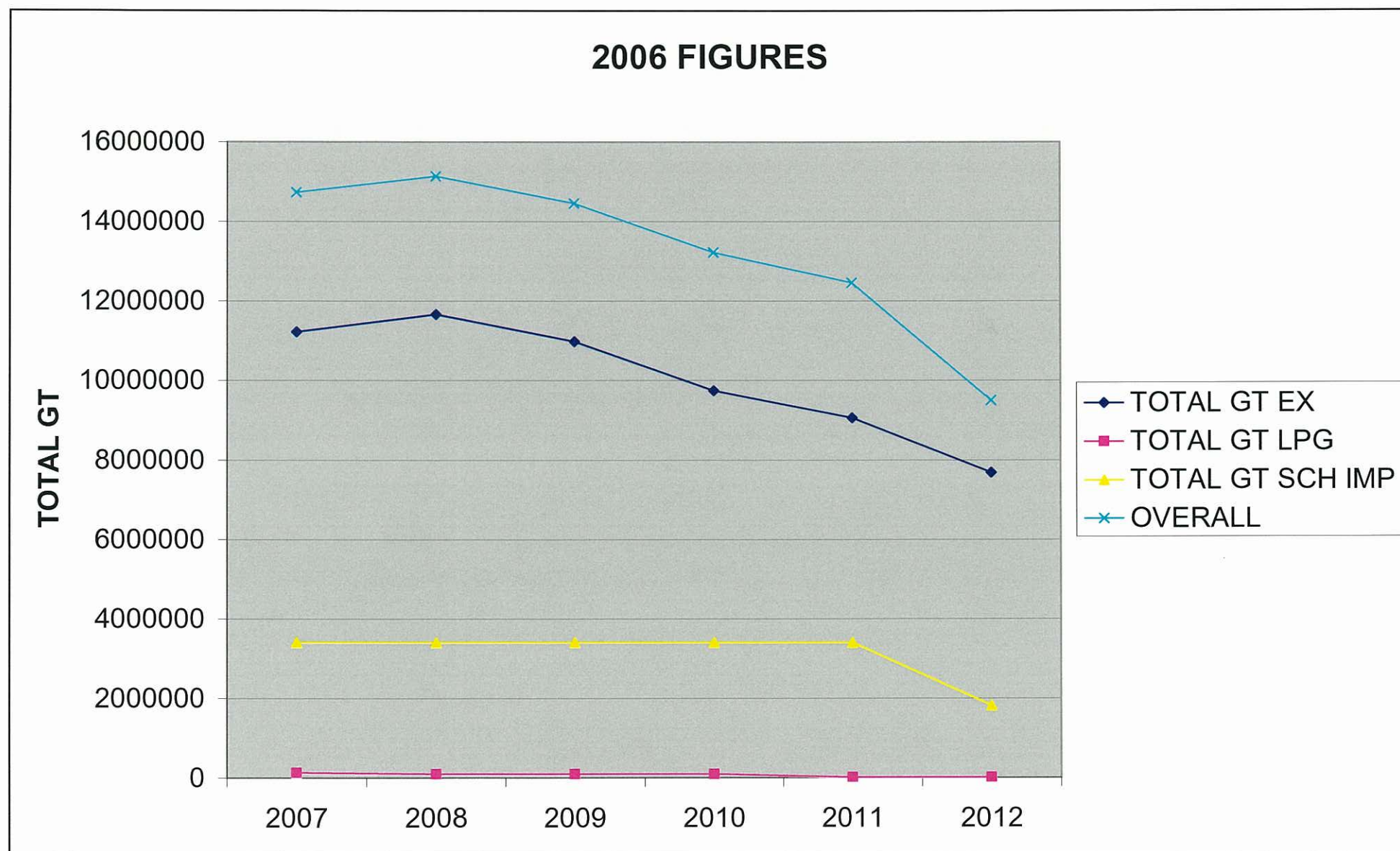
Date: 25 October 2007

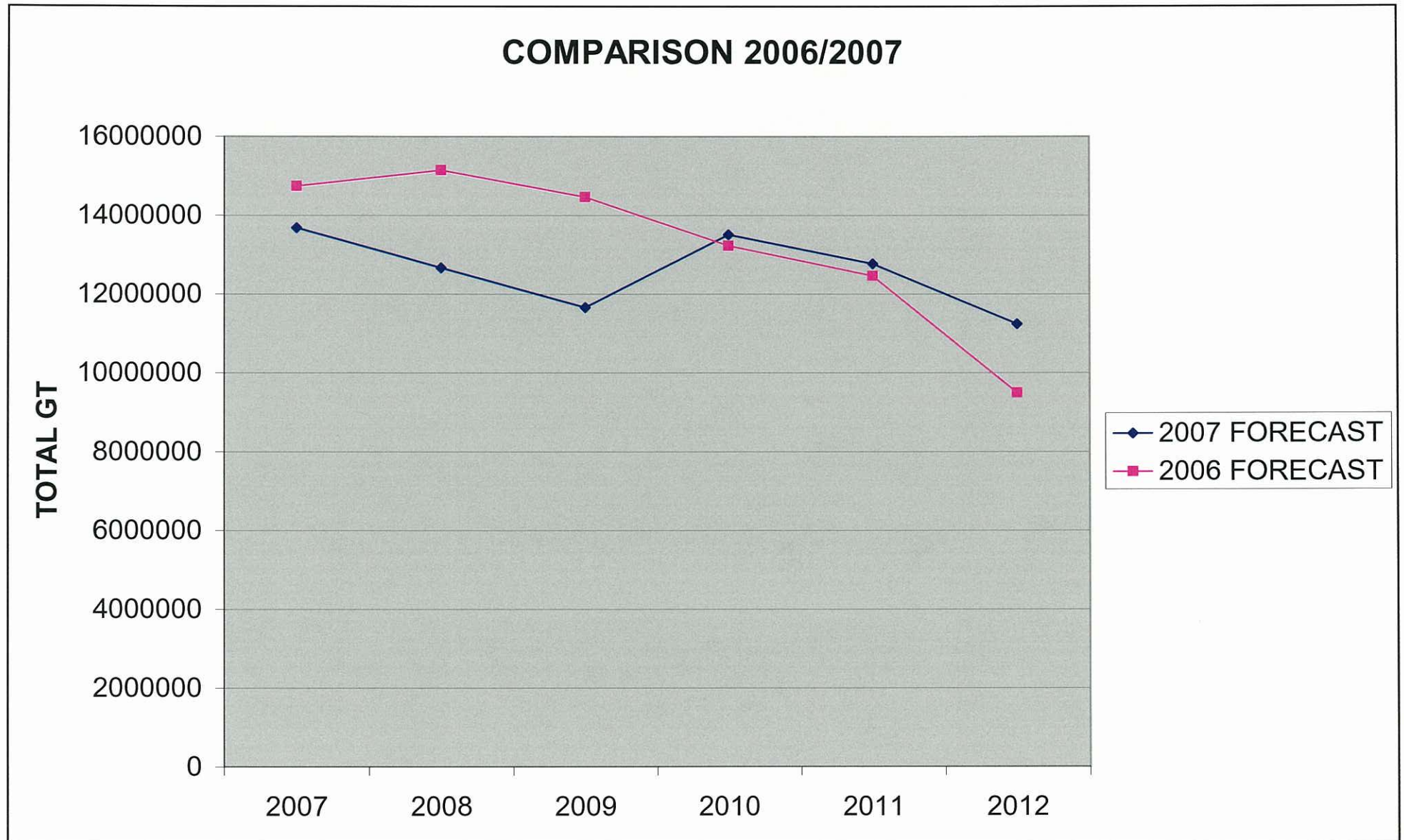
2007 FIGURES

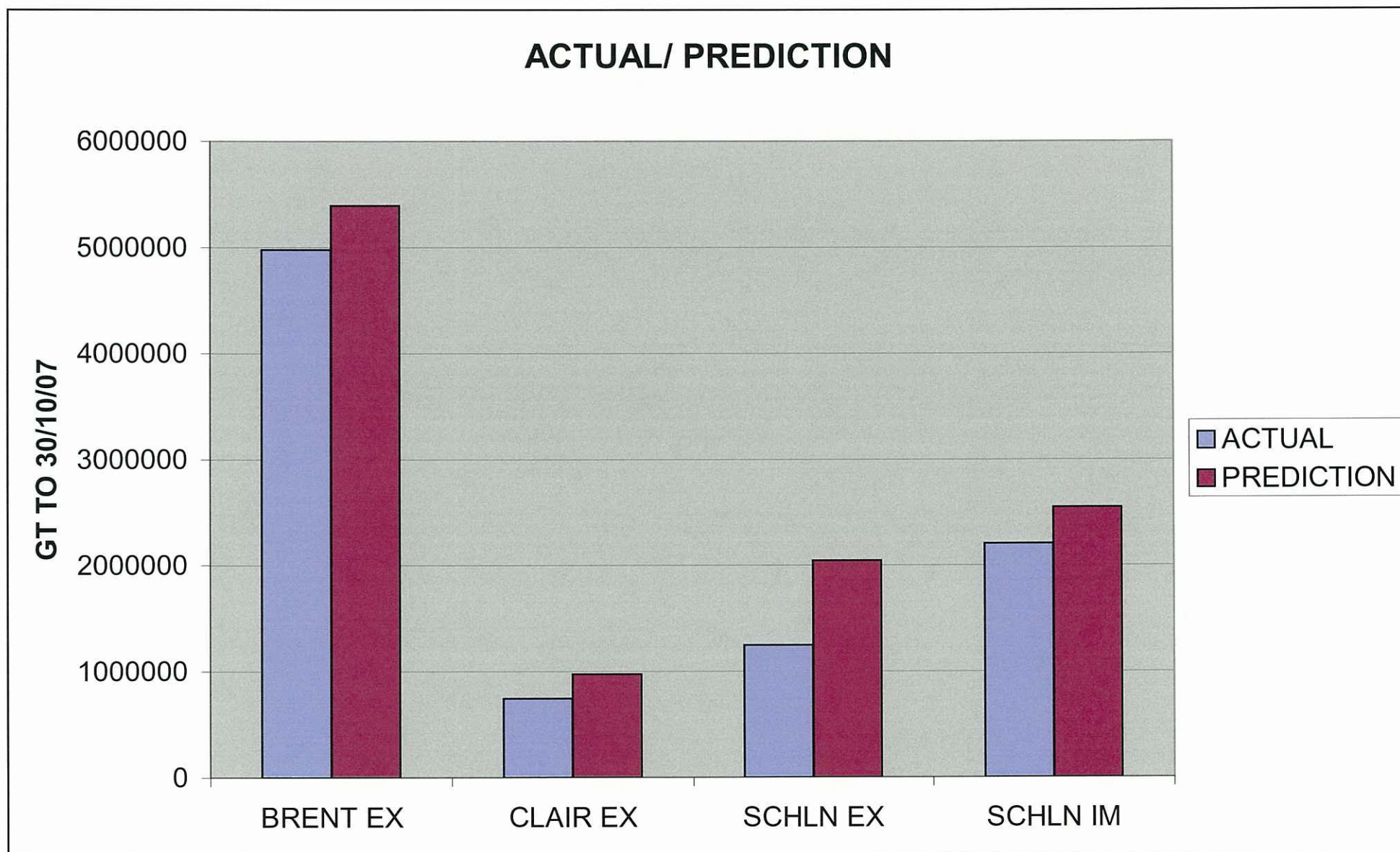


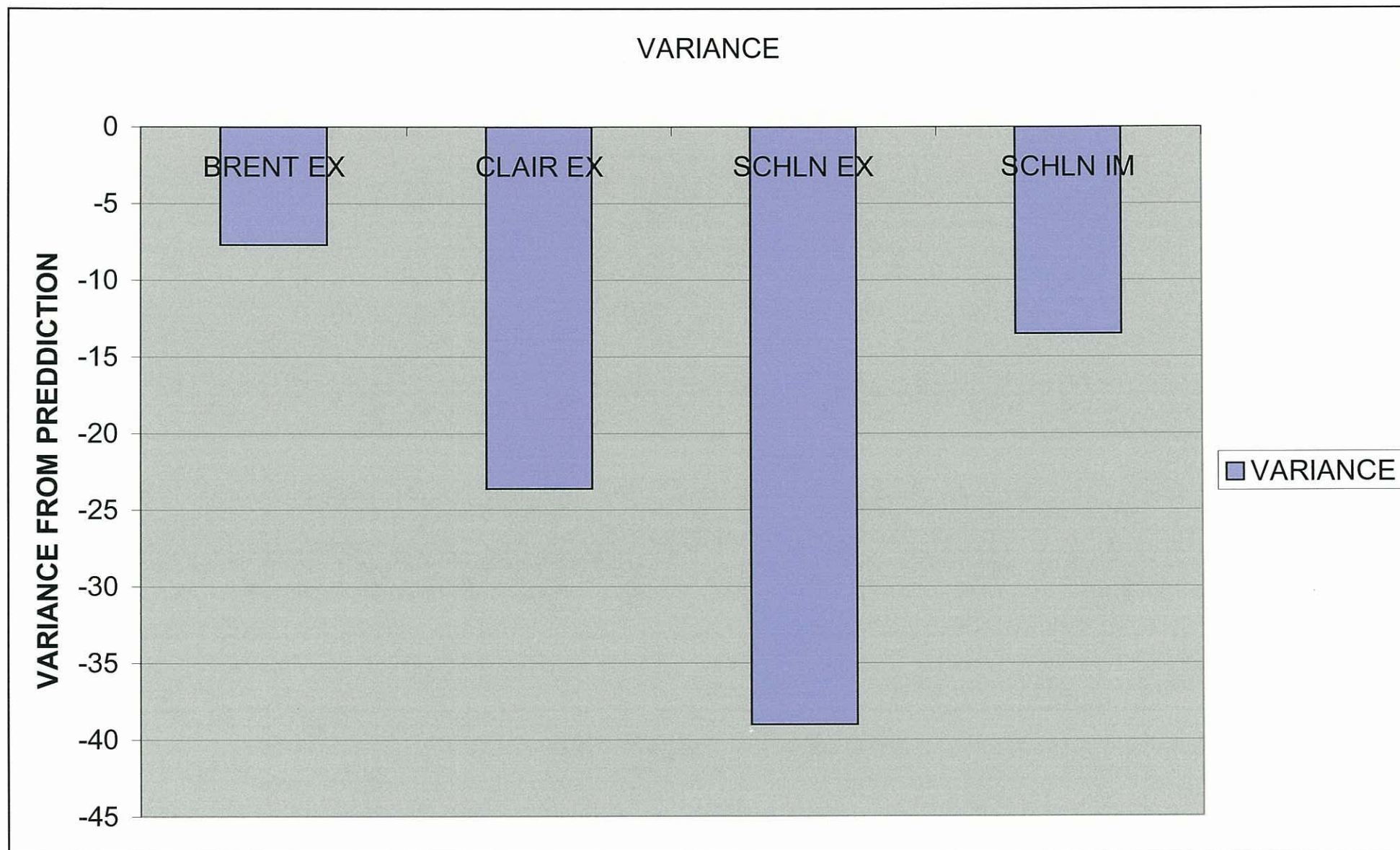














REPORT

To: Harbour Board

From: General Manager

Report No: P&H-23-07-F

Subject: Ports Project Monitoring Report

08 November 2007

1 Introduction

- 1.1 The most up to date information on all projects is incorporated in this report.
- 1.2 Budget Information is attached as Appendix A.

2 Links to Corporate Plan

- 2.1 Projects in this report would make contributions to the Council's priorities of strengthening rural areas and supporting the local economy.

3 Reserve Fund Programme Areas

3.1 Scalloway Dredging – RCM 2308

Funds have been vired to allow application for the consents to dredge. Natural Capital has been appointed as planning and environmental consultants. Capital Projects are due to meet with Natural Capital to obtain guidance on the consents required. Tenders closed for the Lerwick dredging contract on Friday 19 September 2007 and have been evaluated. A verbal update will be made by the General Manager.

3.2 Dock Symbister – RCM 2309

The deadline, as agreed at the last Harbour Board, for reply by the conservation engineer has past and no reply has been received. The Port Engineer is continuing to attempt to progress the issue and a verbal update will be presented to the Harbour Board.

3.3 Scalloway – RCM 2312

The new warehouse is now erected and is available for storage. This project is now complete.

3.4 Tug Replacement Programme - RCM 2313

A meeting took place with representatives from Union Naval Valencia, Sener and Voith at Sella Ness on 02 October 2007. Discussion took place on modifications, alterations and clarification of the General Arrangement. The representatives from UNV, Sener and Voith also took the opportunity to inspect our current fleet of tugs to both familiarise themselves with our operation and to see the high standards that are required. The meeting and visit proved both positive and constructive. The agreed alterations and modifications should not have any additional financial implications. Delivery of the first tug is expected February 2010. The second tug is due for delivery in April/May 2010

3.5 Uyeasound – RCM 2314

The creation of the new Harbour Area at Uyea Sound, by way of a Harbour Jurisdiction Order under the terms of the Zetland County Council Act 1974, has been concluded. This came into effect on 19 September 2007. Application has been made for planning and other statutory consents.

Due to slippage in the Capital Programme, funding is now available to begin works on site. Tulloch Developments have been appointed as the preferred contractor. Preparatory works, including the sourcing of materials are expected to begin during November, with marine works programmed to start in April 2008.

4 **Harbour Account**

4.1 Plant, Vehicles and Equipment – PCM 2101

Three vehicles have been ordered as planned.

Three expressions of interest have been received with regard to the replacement of the standby generation system for the Port Administration Building.

The budget will be fully utilized by the completion of the financial year.

4.2 Navigational Aids, Sullom Voe – PCM 2104

Radio equipment has been ordered to allow remote operation of Scalloway VHF from Sullom Voe VTS during out of hours. Delivery is expected before Christmas with installation expected in January 2008.

AIS has been ordered for the Lyrie. Williamsons are hoping to fit by the end of November.

Fitting of a remote operated camera at Scalloway, to link in with current Sullom Voe VTS system is planned but dependent on the Pathfinder project. Radar at Port Control is 10 years old. Costs of replacing like with like are currently being investigated.

5 **Revenue Projects**

5.1 Sullom Voe Terminal Jetty Maintenance Contract

The maintenance contract is running on schedule and to budget.

6 Other Business

6.1 Walls Pier

Following consultation with pier users and the wider community, a preferred layout has been selected. A Feasibility Study to is currently being drafted, which will be presented to CPRT during mid November 2007.

6.2 Extension to Sella Ness Pier, Sullom Voe – RCM 2315

The project remains on the Capital Programme but is not included in the 07 / 08 budgets due to its position on the prioritisation list.

7 Financial Implications

- 7.1 This report is for information only. There are no financial implications arising from this report.

8 Policy and Delegated Authority

- 8.1 Harbour Board has full delegated authority for the oversight and decision making in respect of the management and operation of the Council's harbour undertakings in accordance with the overall Council policy, revenue budgets and the requirements of the Port Marine Safety Code, as described in Section 16 of the Council's Scheme of Delegations. However, this report is for information only and there are no Policy and Delegated Authority issues to be addressed.

9 Recommendations

- 9.1 I recommend that the Harbour Board note the areas of progress.

PORTS & HARBOURS - CAPITAL PROGRAMME

SOURCE OF FUNDING	CODE	Project	2007/08 Original Budget £	2007/08 Revised Budget £	Actual to 16/10/2007 £	Variance (Budget less Actual) £
Reserve Fund	RCM2308	SCALLOWAY DREDGING CONSENT	0	25,000		
		Works		0	0	0
		Hired and/or Contracted Services		0	0	0
		Ext Design & Supervision		0	30	(30)
		Recharges		0	0	0
		Project Total	0	25,000	30	24,970

SOURCE OF FUNDING	CODE	Project	2007/08 Original Budget £	2007/08 Revised Budget £	Actual to 16/10/2007 £	Variance (Budget less Actual) £
Reserve Fund	RCM2309	PEERIE DOCK, SYMBISTER	212,000	23,844		
		Works		0	0	0
		Hired and/or Contracted Services		0	0	0
		Ext Design & Supervision		0	0	0
		Recharges		8,156	0	8,156
		Project Total	212,000	32,000	0	32,000

SOURCE OF FUNDING	CODE	Project	2007/08 Original Budget £	2007/08 Revised Budget £	Actual to 16/10/2007 £	Variance (Budget less Actual) £
Reserve Fund	RCM2312	SCALLOWAY OIL SUPPORT	100,000			
		Works		277,000	181,123	95,877
		External Consultants			750	(750)
		Misc		0	800	(800)
		Ext Design & Supervision			0	0
		Recharges		3,000	0	3,000
		Project Total	100,000	280,000	182,673	97,327

SOURCE OF FUNDING	CODE	Project	2007/08 Original Budget £	2007/08 Revised Budget £	Actual to 16/10/2007 £	Variance (Budget less Actual) £
Reserve Fund	RCM2314	UYEASOUND HARBOUR	0			
		Works		1,200,000	0	1,200,000
		External Consultants		0	8,852	(8,852)
		Misc		0	3,383	(3,383)
		Ext Design & Supervision		0	0	0
		Recharges			0	0
		Project Total	0	1,200,000	12,235	1,187,765

SOURCE OF FUNDING	CODE	Project	2007/08 Original Budget £	2007/08 Revised Budget £	Actual to 16/10/2007 £	Variance (Budget less Actual) £
Reserve Fund	RCM2313	TUGS FOR SELLANESS				
		Works	27,462	27,462	0	27,462
		External Consultants	100,000	75,000	14,064	60,936
		Misc	361,500	361,500	1,469	360,031
		Ext Design & Supervision		0	0	0
		Project Total	488,962	463,962	15,533	448,429

SOURCE	CODE		2007/08	2007/08	Actual	Variance
--------	------	--	---------	---------	--------	----------

OF FUNDING		Project	Original Budget £	Revised Budget £	to 16/10/2007 £	(Budget less Actual) £
Harbour Account	PCM2101	PLANTS, VEHICLES & EQUIP Works Purchase of vehicles Equipment	70,000	0 70,000 0	0 0 0	0 70,000 0
		Project Total	70,000	70,000	0	70,000

SOURCE OF FUNDING	CODE	Project	2007/08 Original Budget £	2007/08 Revised Budget £	Actual to 16/10/2007 £	Variance (Budget less Actual) £
Harbour Account	PCM2104	NAVIGATIONAL AIDS SV Works Equipment Misc	70,000	70,000 0 0 0	1,096 0 1,540	(1,096) 0 (1,540)
		Project Total	70,000	70,000	2,636	67,364

SOURCE OF FUNDING	CODE	Project	2007/08 Original Budget £	2007/08 Revised Budget £	Actual to 16/10/2007 £	Variance (Budget less Actual) £
Harbour Account	PCM2134	SHORE POWER FOR TUGS Works	70,000	70,000	26,877	43,123
		Project Total	70,000	70,000	26,877	43,123

SOURCE OF FUNDING	CODE	PROJECTS	2007/08 Original Budget £	2007/08 Revised Budget £	Actual to 13/09/2007 £	Variance (Budget less Actual) £
RF	RCM2308	SCALLOWAY DREDGING CONSENT	0	25,000	30	24,970
RF	RCM2309	PEERIE DOCK, SYMBISTER	212,000	32,000	0	32,000
RF	RCM2312	SCALLOWAY OIL SUPPORT	100,000	280,000	182,673	97,327
RF	RCM2314	UYEASOUND HARBOUR	0	1,200,000	12,235	1,187,765
RF	RCM2313	TUGS FOR SELLANESS	488,962	463,962	15,533	448,429
HA	PCM2101	PLANTS, VEHICLES & EQUIP	70,000	70,000	0	70,000
HA	PCM2104	NAVIGATIONAL AIDS SV	70,000	70,000	2,636	67,364
HA	PCM2134	SHORE POWER FOR TUGS	70,000	70,000	26,877	43,123
SUMMARY		Projects Total	1,010,962	2,210,962	239,984	1,970,978

General Ledger Codes	Code Description	This Year's Revised Budget	This Year's Actual inc GRN	Budget v Actual Variance #
PCM21011002	Plnt,Veh&Equip Works Contract	70,000	-	70,000
PCM21041002	Nav Aids-SV Works Contract		1,096 -	1,096
PCM21041120	Nav Aids-SV Oth R&M Costs		1,540 -	1,540
PCM21041200	Nav Aids-SV Equipment Purch	70,000	-	70,000
PCM21341002	Power for Tugs Works Contract	70,000	26,877	43,123
RCM22081767	S/wy Dred CnsntOther Prof Fee	25,000	30	24,970
RCM23091002	Dock Symbstr Works Contract	23,844	-	23,844
RCM23095112	Dock Symbstr Contract Stdrs	3,533	-	3,533
RCM23095911	Dock Symbstr Asset Srv Man	4,623	-	4,623
RCM23121002	Scllwy Oil SuppWorks Contract	277,000	181,123	95,877
RCM23121400	Scllwy Oil SuppVehic Purch		800 -	800
RCM23121760	Scllwy Oil SuppExt Consultant		750 -	750
RCM23125112	Scllwy Oil SuppContract Stdrs	1,000	-	1,000
RCM23125911	Scllwy Oil SuppAsset Srv Man	2,000	-	2,000
RCM23131002	Tugs for Sella.Works Contract	27,462	-	27,462
RCM23131360	Tugs for Sella.Miscellaneous	361,500	-	361,500
RCM23131470	Tugs for Sella.Travel Costs		1,189 -	1,189
RCM23131662	Tugs for Sella.Subsistence		281 -	281
RCM23131760	Tugs for Sella.Ext Consultant	75,000	14,064	60,936
RCM23141000	Uyeasnd Hrb PrjLand/Bldg Purc		1,500 -	1,500
RCM23141002	Uyeasnd Hrb PrjWorks Contract	1,200,000	-	1,200,000
RCM23141200	Uyeasnd Hrb PrjEquipment Purch		131 -	131
RCM23141470	Uyeasnd Hrb PrjTravel Costs		191 -	191
RCM23141501	Uyeasnd Hrb PrjStationery		15 -	15
RCM23141505	Uyeasnd Hrb PrjAdvertising		1,495 -	1,495
RCM23141506	Uyeasnd Hrb PrjPostage		50 -	50
RCM23141760	Uyeasnd Hrb PrjExt Consultant		8,852 -	8,852
		2,210,962	239,985	1,970,977



REPORT

To: Harbour Board
From: General Manager
Report No: P&H-24-07-F
Subject: Port Operations Report

8 November 2007

1 Introduction

- 1.1 This report provides an overview of port operations since the issue of the last Port Operations Report.

2 Pilotage

2.1 Sullom Voe

- 2.1.1 Since the issue of the last Port Operations Report, pilotage operations have been mainly routine with no major incidents.

- 2.1.2 There are twelve first class authorised pilots for Sullom Voe

2.2 Scalloway

- 2.2.1 During September there were 13 acts of Pilotage.

- 2.2.2 There are thirteen authorised pilots for Scalloway including the twelve duly authorised for Sullom Voe.

- 2.2.3 Since the last report, there has been one incident when a pilot was injured whilst disembarking at the South entrance in heavy weather.

- 2.2.4 Details of ship visits to Scalloway are shown in Appendix A. Up to date figures will be provided to the next meeting.

2.3 Small Piers and Harbours

- 2.3.1 Appendix B shows the current actual income for small piers and harbours.

3 Staffing – Port Operations

- 3.1 Appendix C gives the staffing position as at 30 September 2007 showing a total of 133 staff.

4 Port Operations

4.1 Sullom Voe

- 4.1.1 Appendix D shows the exports and imports at the Port of Sullom Voe.
- 4.1.2 Appendix E is an abstract of weather delays for September and the cumulative totals for 2007.

4.2 Scalloway

- 4.2.1 Appendix F shows the fish landing statistics for Scalloway.
- 4.2.2 Appendix G shows the cargo statistics for Scalloway.
- 4.2.3 Appendix H shows the summary management accounts for Scalloway.

4.3 Small Piers and Harbours

- 4.3.1 Appendix I shows the summary management accounts for other small piers and harbours.

5 Shipping Standards

The following incidents have occurred since the last report.

5.1 Ship Incidents

- 5.1.1 On 21 September 2007, the Swedish tanker Bitland struck the jetty when berthing at Scalloway's West Pier. Some damage was caused to the jetty and fendering. The tanker was undamaged.
- 5.1.2 On 20 October 2007, the Norwegian tanker Kronviken was observed within the Area to be Avoided when approaching the Sullom Voe pilot station. The vessel left the Area when instructed to do so by the VTS operator. The vessel's owners/operators and the MCA have been informed of the incident.

5.2 Pollution Incidents

- 5.2.1 There were no incidents during this period.

6 Sullom Voe Strategic Plan

- 6.1 Due to a poor response to the tendering process, this study has been split into two parts.
- 6.2 Part 1 will concentrate on the future life and use of the Sullom Voe Terminal with reference to the extended life of the East Shetland Basin, the potential West of Shetland oil and gas reserves and the role of Sullom Voe in its exploitation. This study will be carried out by Professor Alex Kemp of Aberdeen University.
- 6.3 Part 2 will concentrate on the creation of new, non Terminal related harbour developments taking into consideration the existing services available, the geography of the area, water depth, expertise of the staff and local demand for marine services, e.g. dry-docking. This work will be going out to re-tender in the future.
- 6.4 The General Manager will give a verbal update at this meeting of the Harbour Board.

7 Viking Energy

- 7.1 The General Manager met representatives from Viking Energy to discuss logistics of the import of materials for the proposed wind farm project. They were particularly interested in quay facilities, lay down areas, project offices and mooring of an accommodation vessel at the tug jetty. It was agreed to keep in touch as this project moves into the detailed planning stage.

8 The Met Office

- 8.1 The General Manager met the Operations Director of the Met Office to discuss the possibility of a weather radar to be based in Shetland. It was a positive meeting and contact would be maintained in the build up to further discussions with the Scottish Government and the Public Weather Customer Group.

9 Financial Implications

- 9.1 There are no financial implications arising from this report.

10 Policy and Delegated Authority

- 10.1 The Harbour Board has full delegated authority for oversight and decision making in respect of the management and operation of the Council's harbour undertaking in accordance with overall Council policy and the requirements of the Port Marine Safety Code as described in Section 16 of the Council's Scheme of Delegation. The purpose of this report is to inform members on port operations which fall within the responsibility of the General Manager of Ports & Harbours Operations and does not seek any decision. However, this report is for information only and there are no Policy and Delegated Authority issues to address.

11 Recommendation

11.1 This report is for noting.

Small Piers/Harbours Received
April to July 2007

APPENDIX B

	Baltasound	Collafirth	Cullivoe	Fair Isle	Hamnavoe	Mid Yell	Out Skerries	Symbister	Toft	Uyeasound	Walls	West Burrafirth	Scalloway
Metered Water Charge	0	0	0	0	0	0	0	0	0	0	0	0	(8,925.55)
Equipment and Plant Hire	0	0	0	0	0	0	0	0	0	0	0	0	(1,433.82)
SalmonTender Dues	0	0	0	0	0	0	0	0	0	0	0	0	0
Comp Annual Dues	(213.66)	(563.27)	(264.84)	0	(535.68)	(183.70)	(349.03)	(5,319.03)	0	0	0	(209.73)	(16,586.79)
Fish Landing Dues	0	(793.33)	(23,286.17)	0	0	(2.29)	(30.65)	(10.07)	0	0	0	(704.12)	(28,123.47)
Salmon Landing Dues	0	0	0	0	0	0	0	0	0	0	0	0	(4,523.52)
Hire of Net Bins	0	0	0	0	0	0	0	0	0	0	0	0	(230.22)
Storage Charges	(1,035.11)	0	(1,619.80)	0	0	0	0	0	0	0	(77.70)	0	(14,245.60)
Net Storage on Pier	0	0	0	0	0	0	0	0	0	0	0	0	0
Wharfage Charges	0	0	(199.92)	0	0	0	0	0	0	0	0	0	(31,890.13)
Other Staff Time Charge	0	0	0	0	0	0	0	0	0	0	0	0	(305.90)
Pleasure/Fishing Boat Dues	(421.79)	(180.18)	(506.36)	0	0	0	0	0	0	0	(8.51)	(12.94)	(2,838.45)
Ship Commercial Dues	(1,996.03)	0	(2,672.88)	0	0	0	0	(269.18)	0	0	0	(6.47)	(74,789.39)
Yacht Period Dues	0	0	0	0	0	0	0	(153.55)	0	0	0	(6.47)	(48.34)
Salmon Cages Dues	0	0	0	0	0	0	0	0	0	0	0	0	(1,906.14)
Cruise Ships	0	0	0	0	0	0	0	0	0	0	0	0	0
Dues on Shellfish Landings	0	0	0	0	0	0	0	0	0	0	(251.57)	0	(574.20)
Metered Electricity	0	0	0	0	0	0	0	0	0	0	0	0	(2,445.63)
 Income Harbour Activities	 (3,666.59)	 (1,536.78)	 (28,549.97)	 0	 (535.68)	 (185.99)	 (379.68)	 (5,751.83)	 0	 0	 (337.78)	 (939.73)	 (188,867.15)
 Phone Call Reimbursed	 0	 0	 0	 0	 0	 0	 0	 0	 0	 0	 0	 0	 (11.49)
Sale of Equipment	0	0	0	0	0	0	0	(170.21)	0	0	0	0	(340.42)
Finance Lease Income	0	0	0	0	0	0	0	(175.00)	0	0	0	0	(14,390.00)
Miscellaneous Income	0	0	0	0	0	0	0	0	0	0	0	0	(5,490.97)
 Income - Other	 0	 0	 0	 0	 0	 0	 0	 (345.21)	 0	 0	 0	 0	 (20,232.88)
 TOTAL INCOME	 (3,666.59)	 (1,536.78)	 (28,549.97)	 0	 (535.68)	 (185.99)	 (379.68)	 (6,097.04)	 0	 0	 (337.78)	 (939.73)	 (209,100.03)

**Small Piers/Harbours Income Received
April 2006 to March 2007**

APPENDIX B

	Baltasound	Collafirth	Cullivoe	Fair Isle	Hamnavoe	Mid Yell	Out Skerries	Symbister	Toft	Uyeasound	Walls	West Burrafirth	Scalloway
Metered Water Charge	0	0	0	0	0	0	0	(270.00)	0	0	0	0	(16,082.36)
Equipment and Plant Hire	0	0	0	0	0	0	0	0	0	0	0	0	(1,507.22)
SalmonTender Dues	0	0	0	0	0	0	0	0	0	0	0	0	(112.50)
Comp Annual Dues	(1,363.19)	(2,733.50)	(3,592.50)	0	(287.83)	(240.04)	(1,640.43)	(15,997.01)	(177.50)	0	(876.75)	(958.83)	(20,812.83)
Fish Landing Dues	0	(570.54)	(19,846.79)	0	0	(96.14)	(9.31)	(107.68)	0	0	0	(368.91)	(75,572.38)
Salmon Landing Dues	(2,243.82)	0	0	0	0	0	0	(1,594.92)	(5,948.29)	0	(537.91)	0	(65,931.87)
Hire of Net Bins	0	0	0	0	0	0	0	0	0	0	0	0	(558.50)
Storage Charges	(181.80)	0	(10,798.78)	0	0	0	0	(2,173.32)	0	0	0	(420.51)	(29,794.18)
Net Storage on Pier	0	0	0	0	0	0	0	0	0	0	0	0	0
Wharfage Charges	(1,652.97)	0	(1,312.07)	0	0	0	0	0	0	0	0	0	(29,367.10)
Other Staff Time Charge	0	0	0	0	0	0	0	0	0	0	0	0	(161.36)
Pleasure/Fishing Boat Dues	(3,104.35)	(1,811.55)	(1,565.11)	0	0	0	0	(2,339.50)	(458.64)	0	0	(788.92)	(11,694.17)
Ship Commercial Dues	(2,031.93)	(175.56)	(2,132.13)	0	0	0	0	(1,222.65)	0	0	(16.51)	0	(140,728.97)
Yacht Period Dues	(95.11)	0	0	0	0	0	0	(89.07)	0	0	0	(6.25)	(56.22)
Salmon Cages Dues	(128.24)	0	0	0	0	0	0	0	0	0	0	0	(3,567.29)
Cruise Ships	0	0	0	0	0	0	0	0	0	0	0	0	0
Dues on Shellfish Landings	(127.34)	0	(100.00)	0	(300.00)	(127.34)	0	(100.00)	0	0	(127.34)	(990.29)	(3,287.15)
Metered Electricity	0	0	0	0	0	0	0	0	0	0	0	0	(2,825.40)
 Income Harbour Activities	 (10,928.75)	 (5,291.15)	 (39,347.38)	 0	 (587.83)	 (463.52)	 (1,649.74)	 (23,894.15)	 (6,584.43)	 0	 (1,558.51)	 (3,533.71)	 (402,059.50)
 Phone Call Reimbursed	 0	 0	 0	 0	 0	 0	 0	 0	 0	 0	 0	 0	 (148.01)
Sale of Equipment	0	0	0	0	0	0	0	0	0	0	0	0	(1,021.26)
Finance Lease Income	0	0	(65.00)	0	0	(250.00)	0	(175.00)	0	0	0	0	(22,642.50)
Miscellaneous Income	0	0	0	0	0	0	0	0	0	0	0	0	0
 Income - Other	 0	 0	 (65.00)	 0	 0	 (250.00)	 0	 (175.00)	 0	 0	 0	 0	 (23,811.77)
 TOTAL INCOME	 (10,928.75)	 (5,291.15)	 (39,412.38)	 0	 (587.83)	 (713.52)	 (1,649.74)	 (24,069.15)	 (6,584.43)	 0	 (1,558.51)	 (3,533.71)	 (425,871.27)

**Small Piers/Harbours Income Received
April - March 2006**

APPENDIX B

	Baltasound	Collafirth	Cullivoe	Fair Isle	Hamnavoe	Mid Yell	Out Skerries	Symbister	Toft	Uyeasound	Walls	West Burrafirth	Scalloway
Metered Water Charge	0	0	0	0	0	0	0	0	0	0	0	0	(11,131.58)
Equipment and Plant Hire	0	0	0	0	0	0	0	0	0	0	0	0	(1,544.14)
SalmonTender Dues	0	0	0	0	0	0	0	0	0	0	0	0	0
Comp Annual Dues	(182.92)	(2,528.72)	(2,328.54)	0	(996.20)	(203.70)	(1,185.00)	(9,827.06)	(307.98)	0	(219.70)	(884.07)	(10,836.88)
Fish Landing Dues	0	(1,047.96)	(27,273.74)	0	0	(16.30)	(4.30)	(15.54)	0	0	0	(389.59)	(37,215.57)
Salmon Landing Dues	0	0	0	0	0	0	0	0	0	0	0	0	0
Hire of Net Bins	0	0	0	0	0	0	0	0	0	0	0	0	2000.00
Storage Charges	(163.80)	0	0	0	0	0	0	0	0	0	0	0	(27,285.99)
Net Storage on Pier	0	0	0	0	0	0	0	0	0	0	0	0	0
Wharfage Charges	0	0	(1,087.35)	(148.00)	0	0	0	0	0	0	0	0	(25,275.87)
Other Staff Time Charge	0	0	0	0	0	0	0	0	0	0	0	0	(70.72)
Pleasure/Fishing Boat Dues	(2,368.00)	(2,493.92)	(2,617.26)	0	0	0	0	(1,479.72)	(311.98)	0	0	(89.30)	(6,156.04)
Ship Commercial Dues	(3,010.11)	(3,574.28)	(2,798.66)	0	0	0	0	(932.20)	(905.00)	0	(123.12)	(278.62)	(82,074.52)
Yacht Period Dues	(91.54)	0	0	0	0	0	(29.75)	(203.09)	0	0	0	(12.18)	(36.61)
Salmon Cages Dues	0	0	0	0	0	0	0	0	0	0	0	0	(2,724.36)
Cruise Ships	0	0	0	0	0	0	0	0	0	0	0	0	0
Metered Electricity	0	0	0	0	0	0	0	0	0	0	0	0	(1,566.14)
Income Harbour Activities	(5,816.37)	(9,644.88)	(36,105.55)	(148.00)	(996.20)	(220.00)	(1,219.05)	(12,457.61)	(1,524.96)	0	(342.82)	(1,653.76)	(203,918.42)
Phone Call Reimbursed	0	0	0	0	0	0	0	0	0	0	0	0	(85.78)
Sale of Equipment	0	0	0	0	0	0	0	0	0	0	0	0	(17.02)
Finance Lease Income	0	0	(65.00)	0	0	(250.00)	0	(175.00)	0	0	0	0	(42,380.00)
Miscellaneous Income	0	0	0	0	0	0	0	0	0	0	0	0	(15,971.31)
Income - Other	0	0	(65.00)	0	0	(250.00)	0	(175.00)	0	0	0	0	(58,454.11)
TOTAL INCOME	(5,816.37)	(9,644.88)	(36,170.55)	(148.00)	(996.20)	(470.00)	(1,219.05)	(12,632.61)	(1,524.96)	0	(342.82)	(1,653.76)	(262,372.53)

**Small Piers/Harbours Income Received
April 2004 to Feb 2005**

APPENDIX B

	Baltasound	Collafirth	Cullivoe	Fair Isle	Hamnavoe	Mid Yell	Out Skerries	Symbister	Toft	Uyeasound	Walls	West Burrafirth	Scalloway
Metered Water Charge													(9,448.12)
SalmonTender Dues													(11.90)
Comp Annual Dues	(290.94)	(2,095.60)	(2,243.60)		(751.46)		(760.50)	(18,014.62)	(287.30)		99.60		(16,393.11)
Fish Landing Dues		(303.87)	(21,158.22)			(2.98)		(3.02)				(356.75)	(25,813.90)
Salmon Landing Dues	(977.40)									(4,014.54)	(349.25)		(23,770.51)
Hire of Net Bins								(1,214.22)					(634.03)
Storage Charges	(569.20)											(146.40)	(25,887.32)
Net Storage on Pier													
Wharfage Charges			(1,380.40)					(11.20)					(30,221.45)
Other Staff Time Charge													
Pleasure/Fishing Boat Dues	(1,789.97)	(4,324.09)	(4,007.86)					(2,703.85)					(6,123.78)
Ship Commercial Dues	(1,791.38)	(256.41)	(3,217.78)					(1,963.28)	(338.00)				(66,627.97)
Yacht Period Dues	(139.75)							(11.06)					(54.50)
Salmon Cages Dues													(2,985.54)
Cruise Ships													
Metered Electricity													
Equipment and Plant Hire													(1,118.33)
Income Harbour Activities	(5,558.64)	(6,979.97)	(32,007.86)	0	(751.46)	(2.98)	(760.50)	(23,921.25)	(625.30)	(4,014.54)	-249.65	(503.15)	(209,090.46)
Phone Call Reimbursed		(32.77)											(94.13)
Sale of Equipment													(1,872.31)
Finance Lease Income			(65.00)			(250.00)		(175.00)					(23,830.00)
Miscellaneous Income		(97.58)											(23.73)
Income - Other	0	(130.35)	(65.00)	0	0	(250.00)	0	(175.00)	0	0	0	0	(25,820.17)
TOTAL INCOME	(5,558.64)	(7,110.32)	(32,072.86)	0	(751.46)	(252.98)	(760.50)	(24,096.25)	(625.30)	(4,014.54)	(249.65)	(503.15)	(234,910.63)

**Small Piers/Harbours Income Received
April 2003 - March 2004**

APPENDIX B

	Baltasound	Collafirth	Cullivoe	Fair Isle	Hamnavoe	Mid Yell	Out Skerries	Symbister	Toft	Uyeasound	Walls	West Burrafirth	Scalloway
Metered Water Charge													(7,369.78)
SalmonTender Dues			(21.00)										(72.33)
Comp Annual Dues	(60.31)	(5,261.84)	(2,607.92)		(371.75)		(1,375.56)	(12,289.40)	(280.33)		(1,140.30)	(1,218.73)	(15,655.50)
Fish Landing Dues	(6.82)	(521.05)	(8,671.17)			(22.68)		(23.32)			(178.75)	(138.11)	(18,681.02)
Salmon Landing Dues	(1,381.41)		(11,022.37)						(5,393.65)	(1,099.37)	(7,238.64)		(2,945.49)
Hire of Net Bins													(3,166.74)
Storage Charges	(352.68)		(52.20)									46.48	(17,681.15)
Net Storage on Pier													
Wharfage Charges	(451.00)		(1,809.39)					(348.80)					(27,432.13)
Other Staff Time Charge													(302.22)
Pleasure/Fishing Boat Dues	(1,305.19)	(4,328.38)	(1,400.66)				(1,767.60)	(131.76)	(11.88)			(5.66)	(5,066.69)
Ship Commercial Dues	(2,465.21)		(4,301.32)				1767.60	(2,817.64)	4426.00				(53,651.26)
Yacht Period Dues	(253.26)							(22.12)				(17.12)	(29.01)
Salmon Cages Dues	(406.70)		(186.75)										(4,682.35)
Cruise Ships													
Metered Electricity													
Equipment and Plant Hire													(1,032.18)
Income Harbour Activities	(6,682.58)	(10,111.27)	(30,072.78)	0	(371.75)	(22.68)	(1,375.56)	(15,633.04)	(1,259.86)	(1,099.37)	(8,557.69)	(1,333.14)	(157,767.85)
 Phone Call Reimbursed		(19.66)											(110.12)
Sale of Equipment													
Finance Lease Income			(65.00)			(250.00)		(175.00)					(27,151.82)
Miscellaneous Income													(152.38)
Income - Other	0	(19.66)	(65.00)	0	0	(250.00)	0	(175.00)	0	0	0	0	(27,414.32)
 TOTAL INCOME	(6,682.58)	(10,130.93)	(30,137.78)	0	(371.75)	(272.68)	(1,375.56)	(15,808.04)	(1,259.86)	(1,099.37)	(8,557.69)	-1333.14	-185182.17

Small Piers/Harbours Income
April 2002 - March 2003

APPENDIX B

	Baltasound	Collafirth	Cullivoe	Fair Isle	Hamnavoe	Mid Yell	Out Skerries	Symbister	Toft	Uyeasound	Walls	West Burrafirth	Scalloway
Metered Water Charge			(25,939.28)					(6.96)					(5,153.32)
SalmonTender Dues												(5.66)	(164.92)
Comp Annual Dues		(281.16)	(6,788.54)		(609.07)		(1,496.12)	(19,928.16)	(782.77)		(339.46)	(511.71)	(11,764.50)
Fish Landing Dues		(2,685.65)	(23,502.62)					(88.49)				(228.74)	(38,390.43)
Salmon Landing Dues	(4,730.85)							(12,360.53)	(19,900.80)	(5,484.10)	(522.50)		(9,728.56)
Hire of Net Bins								(1,572.48)					(6,668.48)
Storage Charges	342.36		(8,553.00)									(153.84)	(20,856.51)
Net Storage on Pier													
Wharfage Charges			(5,482.39)				(811.80)	(318.00)				(16.96)	(35,201.92)
Other Staff Time Charge													(309.07)
Pleasure/Fishing Boat Dues	(285.58)	(6,302.87)	(4,421.81)		(11.32)		(5.66)	(116.88)	(61.95)			(396.10)	(9,136.25)
Ship Commercial Dues	(2,564.11)		(5,021.44)				(349.30)	(1,776.03)	(9,935.55)			(1,078.78)	(54,726.05)
Yacht Period Dues				(72.17)			(28.13)	(17.02)				(5.49)	
Salmon Cages Dues			(189.24)										(3,486.42)
Cruise Ships													
Metered Electricity													
Equipment and Plant Hire													(1,173.51)
Income Harbour Activities	(7,238.18)	(9,269.68)	(79,898.32)	(72.17)	(620.39)	0	(2,691.01)	(36,184.55)	(30,681.07)	(5,484.10)	(861.96)	(2,397.28)	(196,759.94)
Phone Call Reimbursed													(282.89)
Sale of Equipment													(851.05)
Finance Lease Income			(65.00)			(250.00)		(175.00)					(16,335.00)
Miscellaneous Income													(1,179.02)
Income - Other	0	0	(65.00)	0	0	(250.00)	0	(175.00)	0	0	0	0	(18,647.96)
TOTAL INCOME	(7,238.18)	(9,269.68)	(79,963.32)	(72.17)	(620.39)	(250.00)	(2,691.01)	(36,359.55)	(30,681.07)	(5,484.10)	(861.96)	(2,397.28)	(215,407.90)

Small Piers/Harbours Income
April 2001 - March 2002

APPENDIX B

	Baltasound	Collafirth	Cullivoe	Fair Isle	Hamnavoe	Mid Yell	Out Skerries	Symbister	Toft	Uyeasound	Walls	West Burrafirth	Scalloway
Metered Water Charge	(12.73)												(7,041.56)
SalmonTender Dues													(833.49)
Comp Annual Dues	(203.06)	(853.44)	(1,966.93)		(421.96)		(1,686.04)	(5,942.52)	(577.94)		(156.20)	(156.20)	(7,273.64)
Fish Landing Dues		(2,379.44)	(28,526.09)			(19.19)		(160.41)				(751.94)	(75,389.36)
Salmon Landing Dues	(4,820.39)		(3,882.98)							(5,500.05)	(593.18)		(19,786.58)
Hire of Net Bins								(1,045.54)	(11,594.34)				(8,003.34)
Storage Charges	(605.88)												(25,474.53)
Net Storage on Pier													(52.78)
Wharfage Charges	(704.90)		(2,771.09)				(9.00)	(1,008.35)					(35,459.31)
Other Staff Time Charge													(226.96)
Pleasure/Fishing Boat Dues	(532.04)	(3,899.20)	(2,569.25)		(5.49)			(213.17)				(59.84)	(7,744.67)
Ship Commercial Dues	(2,321.71)	(157.08)	(1,994.44)				(122.06)	(1,519.80)	(40.43)				(75,762.57)
Yacht Period Dues	(32.94)			(82.98)			(49.40)	(21.92)					(5.49)
Salmon Cages Dues													(8,341.13)
Cruise Ships	(6,425.14)												
Metered Electricity													
Equipment and Plant Hire													(2,043.06)
Income Harbour Activities	(15,658.79)	(7,289.16)	(41,710.78)	(82.98)	(427.45)	(19.19)	(1,866.50)	(9,911.71)	(12,212.71)	(5,500.05)	(749.38)	(967.98)	(273,438.47)
Phone Call Reimbursed		(123.40)											(450.13)
Finance Lease Income			(65.00)			(250.00)		(537.50)					(39,080.00)
Miscellaneous Income													(117.61)
Income - Other	0	(123.40)	(65.00)	0	0	(250.00)	0	(537.50)	0	0	0	0	(39,647.74)
TOTAL INCOME	(15,658.79)	(7,412.56)	(41,775.78)	(82.98)	(427.45)	(269.19)	(1,866.50)	(10,449.21)	(12,212.71)	(5,500.05)	(749.38)	(967.98)	(313,086.21)

Small Piers/Harbours Income
April 2000 - March 2001

	Baltasound	Collafirth	Cullivoe	Fair Isle	Hamnavoe	Mid Yell	Out Skerries	Symbister	Toft	Uyeasound	Walls	West Burrafirth	Scalloway
Metered Water Charge							(159.84)						(4,598.78)
SalmonTender Dues													(104.94)
Comp Annual Dues	(198.12)	(2,856.22)	(1,249.68)		(485.84)		(873.36)	(6,588.36)			(300.40)	(356.86)	(9,502.69)
Fish Landing Dues		(2,089.40)	(31,093.46)		(7.18)	(1.15)		(425.20)				(538.98)	(46,678.15)
Salmon Landing Dues								(4,650.50)	(26,229.90)	(5,140.06)			(14,307.22)
Hire of Net Bins								(90.80)					(3,779.36)
Storage Charges													(15,113.71)
Net Storage on Pier													
Wharfage Charges	(114.30)		(1,670.33)				(16.13)	(294.00)					(25,005.03)
Other Staff Time Charge													(27.89)
Pleasure/Fishing Boat Dues	(1,634.12)	(2,994.17)	(6,080.78)									(244.86)	(5,918.02)
Ship Commercial Dues	(890.82)	(94.72)	(602.58)				(684.42)	(323.72)					(45,882.37)
Yacht Period Dues	(21.45)		(65.00)	(176.95)			(58.98)	(25.95)					(64.34)
Salmon Cages Dues													(1,221.76)
Cruise Ships													(168.96)
Metered Electricity													
Equipment and Plant Hire													(1,779.03)
Income Harbour Activities	(2,858.81)	(8,034.51)	(40,761.83)	(176.95)	(493.02)	(1.15)	(1,792.73)	(12,398.53)	(26,229.90)	(5,140.06)	(300.40)	(1,140.70)	(174,152.25)
 Phone Call Reimbursed		(18.38)											(652.60)
Finance Lease Income			(65.00)			(250.00)		150					(30,865.00)
Miscellaneous Income		(50.14)											(4,374.49)
 Income - Other	0	(68.52)	(65.00)	0	0	(250.00)	0	150	0	0	0	0	(35,892.09)
 TOTAL INCOME	(2,858.81)	(8,103.03)	(40,826.83)	(176.95)	(493.02)	(251.15)	(1,792.73)	(12,248.53)	(26,229.90)	(5,140.06)	(300.40)	(1,140.70)	(210,044.34)

Small Piers/Harbours Income
April 1999 to March 2000

	Baltasound	Collafirth	Cullivoe	Hamnavoe	Mid Yell	Out Skerries	Symbister	Toft	Uyeasound	Walls	West Burrafirth	Scalloway
Metered Water Charge	-38.09											-7280.35
Salmon Tender Dues												-120.54
Comp Annual Dues	-192.40	-2180.32	-3105.92	-484.55		-1530.08	-13717.18	-888.00		-320.32	-148.00	-13794.42
Fish Landing Dues		-3472.20	-17235.69				-765.17			-1722.50	-146.95	-57968.64
Salmon Landing Dues			-11194.22				-2680.00	-10655.00	-10418.09	-209.00		-26441.17
Hire of Net Bins			-1211.57				-2406.12					-8293.93
Storage Charges		-19.95					-560.30					-32892.01
Net Storage on Pier												0.00
Wharfage Charges			-551.88			-17.50	-127.45					-23617.46
Other Staff Time Charge												-514.04
Pleasure/Fishing Boat Dues	-2012.04	-4174.41	-1774.99				-174.21	-193.60			-110.08	-11216.71
Ship Commercial Dues	-5468.35	-3275.15	-184.14			-90.08	-272.43	-484.64				-70922.99
Yacht Period Dues	-98.80					-26.00	-82.30					-15.60
Metered Electricity												0.00
Equipment and Plant Hire												-1082.74
Income Harbour Activities	-7809.68	-13122.03	-35258.41	-484.55	0.00	-1663.66	-20785.16	-12221.24	-10418.09	-2251.82	-405.03	-254160.60
Phone Call Reimbursed		-250.98										-1175.56
Finance Lease Income					-250.00		-150.00					-26767.50
Miscellaneous Income							-631.23					-88.75
Income - Other	0.00	-250.98	0	0	-250	0.00	-781.23	0.00	0.00	0.00	0.00	-28031.81
TOTAL INCOME	-7809.68	-13373.01	-35258.41	-484.55	-250	-1663.66	-21566.39	-12221.24	-10418.09	-2251.82	-405.03	-282192.41

Appendix E.2

INCOME - Small Piers/Harbours
April 98 to March 99

	Baltasound	Collafirth	Cullivoe	Hamnavoe	Mid Yell	Out Skerries	Symbister	Toft	Uyeasound	Walls	West Burrafirth	Scalloway
Metered Water Charge												-8545.20
Salmon Tender Dues												-432.65
Comp Annual Dues	-186.16	-1350.70	-1557.81	-590.00	-171.84	-1174.24	-11577.27	-177.76		-152.90	-143.20	-18645.26
Fish Landing Dues		-3370.10	-8105.82				-1065.86	-217.43			-899.17	-69584.39
Salmon Landing Dues	-333.58								-950.51			-12519.62
Hire of Net Bins												-8822.70
Storage Charges												-17532.86
Net Storage on Pier												-32.00
Wharfage Charges	-952.00					-26.18	-8.37					-28801.77
Other Staff Time Charge												-574.81
Pleasure/Fishing Boat Dues	-173.91	-1913.99	-1121.36				-130.76	-82.97				-6067.60
Ship Commercial Dues	-1227.60					-146.63	-255.44	-15.50				-63679.16
Yacht Period Dues	-20.02	-5.00				-48.56	-87.21					-61.26
Metered Electricity												-15.90
Income Harbour Activities	-2893.27	-6639.79	-10784.99	-590.00	-171.84	-1395.61	-13124.91	-493.66	-950.51	-152.90	-1042.37	-235315.18
Phone Call Reimbursed		-304.01										-1522.59
Finance Lease Income			-65		-500.00		-150.00					-26770.20
Miscellaneous Income							-1991.91					-607.65
Income - Other	0.00	-304.01	-65	0	-500	0	-2141.91	0.00	0.00	0.00	0.00	-28900.44
TOTAL INCOME	-2893.27	-6943.80	-10849.99	-590	-671.84	-1395.61	-15266.82	-493.66	-950.51	-152.90	-1042.37	-264215.62

Appendix E.1

INCOME - 97/98
Actual 010497 to 310398

	Baltasound	Collafirth	Cullivoe	Hamnavoe	Mid Yell	Skerries	Symbister	Uyeasound	Walls	West Burrafirth	Toft	Scalloway
Metered Water Charge												3734.16
Salmon Tender Dues												1142.70
Comp Annual Dues	294.00	2224.10	2333.40	19.65	605.55	986.70	8944.40		437.50		486.50	17526.85
Fish Landing Dues		4646.94	14230.60				990.54			2404.19		88108.03
Salmon Landing Dues	368.73		874.25		100.00	100.00		874.39	100.00		2505.22	7373.91
Hire of Net Bins			621.00				1392.75					8190.03
Storage Charges			1544.70									25645.64
Net Storage on Pier												107.45
Wharfage Charges						150.30						23732.38
Oth Staff Time Charge												531.72
Pleasure/Fishing Boat Dues		3977.44				56.70	60.30			103.20		6840.68
Ship Commercial Dues		810.00				588.70	1030.20				81.90	83727.88
Yacht Period Dues		11.40				30.21	25.65					95.00
Income Harbour Activities	662.73	11669.88	19603.95	19.65	705.55	1912.61	12443.84	874.39	537.50	2507.39	3073.62	266756.43
Phone Call Reimbursed		329.97										1792.96
Sale of Land												1300.00
Miscellaneous Income												0.11
Finance Lease Income			65.00				150					24430.00
Income - Other	0.00	329.97	65.00	0.00	0.00	0.00	150.00	0.00	0.00	0.00	0.00	27523.07
TOTAL INCOME	662.73	11999.85	19668.95	19.65	705.55	1912.61	12593.84	874.39	537.50	2507.39	3073.62	294279.50

Staffing Position – 30 September 2007

<u>Post</u>	<u>Established Posts</u>	<u>Actual</u>	<u>Comments</u>
General Manager	1	1	
Marine Officer/Pilots	12	12	
Operations Manager – Ports	1	1	
Operations Manager – Marine	1	1	
Port Safety Officers	2	2	
Launch Crew Skippers	9	9	
Launch Crew Deckhands	13	13	
Tug - Masters	12	12	
Tug - Chief Engineers	12	12	
Tug - 2 nd Engineers	9	9	
Tug - Mates	12	12	2 Temporary contract
Tug - GPRs'	3	3	1 Temporary contract
Assistant Pier Masters (Scalloway)	2	2	
Engineering Assistant (Scalloway)	1	1	
Full Time Harbour Assistant	1	1	
Part Time Harbour Assistants	9	8	
Administration Manager	1	1	
Finance Assistants	4	4	
Clerical Assistant	4	4	
Cook	1	1	

Superintendent Engineer – Marine	1	1
Superintendent Engineer – Ports	1	1
Maintenance Planning Engineer	1	0
Engineering Supervisor	1	1
Electrical Engineer	3	2
Marine Engineer	3	3
Welder/Fabricator	2	2
Maintenance Engineer	1	1
Engineering Assistant	4	4
Apprentice – Electrical	1	1
Apprentice – Mechanical	1	1
General Assistant	2	2
Store Keeper	1	1
Storeman	1	1
Senior Stores Assistant	1	1
Stores Assistant	1	1
Driver	1	1
Total	136	133

	Jan	Feb	March	April	May	June	July	Aug	Sept	Oct	Nov	Dec	Total
Brent Exports													
No of Vessels	8	8	10	9	8	11	8	6	10				78
GT	575335	516126	637766	578095	514461	664159	492608	389768	608070				4976388
Cargo C/Wise	401064	161747	324657	323559	157842	414313	325873	166166	161897				2437118
Cargo Foreign	416576	629067	615742	516912	625240	604601	378657	399992	710318				4897105
Schiehallion Exports													
No of Vessels	3	2	3	1	2	2	3	1	3				20
GT	176067	137873	189267	85431	137549	115923	173525	58156	174982				1248773
Cargo C/Wise	0	0	0	0	0	0	0	0	89373				89373
Cargo Foreign	279638	239669	329047	149355	239179	166555	264019	89751	178731				1935944
Joint Exports													
No of Vessels	0	0	0	0	0	0	0	0	0				0
GT	0	0	0	0	0	0	0	0	0				0
Brent C/Wise	0	0	0	0	0	0	0	0	0				0
Brent Foreign	0	0	0	0	0	0	0	0	0				0
Schiehallion C/Wise	0	0	0	0	0	0	0	0	0				0
Schiehallion Foreign	0	0	0	0	0	0	0	0	0				0
Schiehallion Imports													
No of Ships	4	4	3	4	4	4	2	2	3				30
GT	281443	302104	226578	302104	281443	302104	151052	130391	226578				2203797
Schiehallion C/Wise	240187	260194	213347	258483	226719	228574	182018	144430	122222				1876174
Clair Exports													
No of Ships	2	1	1	2	2	1	1	1	2				13
GT	113682	56115	52348	115510	118307	58099	52348	58099	121142				745650
Cargo Coastwise	0	0	0	88091	90914	90770	0	0	0				269775
Cargo Foreign	181809	90955	90421	90922	82852	0	82966	90951	181950				892826
Ship to Ship Imports													
No of Ships	0	0	0	0	0	0	0	0	0				0
GT	0	0	0	0	0	0	0	0	0				0
STS Crude C/Wise	0	0	0	0	0	0	0	0	0				0
STS Crude Foreign	0	0	0	0	0	0	0	0	0				0
Ship to Ship Exports													
No of Ships	0	0	0	0	0	0	0	0	0				0
GT	0	0	0	0	0	0	0	0	0				0
STS Crude C/Wise	0	0	0	0	0	0	0	0	0				0
STS Crude Foreign	0	0	0	0	0	0	0	0	0				0
Ship To Ship Joint Exp													
No of Ships	0	0	0	0	0	0	0	0	0				0
GT	0	0	0	0	0	0	0	0	0				0
STS Crude C/Wise	0	0	0	0	0	0	0	0	0				0
STS Crude Foreign	0	0	0	0	0	0	0	0	0				0
Brent C/Wise	0	0	0	0	0	0	0	0	0				0
Brent Foreign	0	0	0	0	0	0	0	0	0				0
Schiehallion C/Wise	0	0	0	0	0	0	0	0	0				0
Schiehallion Foreign	0	0	0	0	0	0	0	0	0				0
Propane Exports													
No of Vessels	1	0	0	0	0	0	1	0	1				3
GT	14102	0	0	0	0	0	18270	0	14102				46474
Propane C/Wise	0	0	0	0	0	0	0	0	0				0
Propane Foreign	8558	0	0	0	0	0	8394	0	8522				25474
Butane Exports													
No of Vessels	0	0	0	0	0	1	0	0	0				1
GT	0	0	0	0	0	35190	0	0	0				35190
Butane C/Wise	0	0	0	0	0	0	0	0	0				0
Butane Foreign	0	0	0	0	0	10494	0	0	0				10494
Joint Exports													
No of Vessels	0	0	0	0	0	0	0	0	0				0
GT	0	0	0	0	0	0	0	0	0				0
Propane C/Wise	0	0	0	0	0	0	0	0	0				0
Propane Foreign	0	0	0	0	0	0	0	0	0				0
Butane C/Wise	0	0	0	0	0	0	0	0	0				0
Butane Foreign	0	0	0	0	0	0	0	0	0				0

	Jan	Feb	March	April	May	June	July	Aug	Sept	Oct	Nov	Dec	Total
Brent Exports													
No of Vessels	10	9	13	12	7	8	10	11	12	7	9	12	120
GT	626205	526077	879540	758268	449674	516941	630957	659146	692017	482743	541358	713503	7476429
Cargo C/Wise	239880	158622	158950	401211	78800	81161	160549	235619	286576	82320	158198	405564	2447450
Cargo Foreign	689240	573658	1126253	673829	607068	689366	829013	723923	643902	661869	590378	609466	8417965
Schiehallion Exports													
No of Vessels	2	3	4	3	2	2	3	1	1	4	2	3	30
GT	136925	239995	251835	221228	135459	160898	175923	81270	81093	282192	117703	215628	2100149
Cargo C/Wise	0	0	0	88059	0	0	157941	0	0	203912	0	0	449912
Cargo Foreign	230673	335849	421755	291456	227989	293213	89670	144722	104078	190266	170346	367977	2867994
Joint Exports													
No of Vessels	0	0	0	0	0	0	0	0	0	0	1	0	1
GT	0	0	0	0	0	0	0	0	0	0	81310	0	81310
Brent C/Wise	0	0	0	0	0	0	0	0	0	0	0	0	0
Brent Foreign	0	0	0	0	0	0	0	0	0	0	56567	0	56567
Schiehallion C/Wise	0	0	0	0	0	0	0	0	0	0	0	0	0
Schiehallion Foreign	0	0	0	0	0	0	0	0	0	0	89600	0	89600
Schiehallion Imports													
No of Ships	4	3	4	5	4	4	4	1	3	4	4	4	44
GT	302104	226578	302104	377630	302104	302104	302104	75526	185256	298710	260782	302104	3237106
Schiehallion C/Wise	299066	284988	324212	442136	347360	345111	379502	89360	224977	392874	276722	295245	3701553
Clair Exports													
No of Ships	1	1	0	1	1	2	1	1	1	2	1	1	13
GT	56115	62929	0	63462	58129	117880	63462	56115	63462	114044	56346	56115	768059
Cargo Coastwise	90997	86652	0	0	0	86625	0	82808	0	0	86939	0	434021
Cargo Foreign	0	0	0	90911	90907	82901	90943	0	90898	181794	0	90934	719288
Ship to Ship Imports													
No of Ships	0	0	0	0	0	1	0	0	0	0	0	0	1
GT	0	0	0	0	0	79592	0	0	0	0	0	0	79592
STS Crude C/Wise	0	0	0	0	0	0	0	0	0	0	0	0	0
STS Crude Foreign	0	0	0	0	0	137948	0	0	0	0	0	0	137948
													0
Ship to Ship Exports													
No of Ships	0	0	0	0	0	0	0	0	0	0	0	0	0
GT	0	0	0	0	0	0	0	0	0	0	0	0	0
STS Crude C/Wise	0	0	0	0	0	0	0	0	0	0	0	0	0
STS Crude Foreign	0	0	0	0	0	0	0	0	0	0	0	0	0
													0
Ship To Ship Joint Exp													
No of Ships	0	0	0	0	0	1	0	0	0	0	0	0	1
GT	0	0	0	0	0	163720	0	0	0	0	0	0	163720
STS Crude C/Wise	0	0	0	0	0	0	0	0	0	0	0	0	0
STS Crude Foreign	0	0	0	0	0	137948	0	0	0	0	0	0	137948
Brent C/Wise	0	0	0	0	0	0	0	0	0	0	0	0	0
Brent Foreign	0	0	0	0	0	0	0	0	0	0	0	0	0
Schiehallion C/Wise	0	0	0	0	0	0	0	0	0	0	0	0	0
Schiehallion Foreign	0	0	0	0	0	148620	0	0	0	0	0	0	148620
Propane Exports													
No of Vessels	0	1	0	1	1		1	0	1	0	1	0	6
GT	0	11822	0	12183	11822		14102	0	11822	0	18360	0	80111
Propane C/Wise	0	0	0	0	0		0	0	0	0	0	0	0
Propane Foreign	0	8522	0	8634	8427		8480	0	8553	0	8955	0	51571
Butane Exports													
No of Vessels	0	1	0	1	0		1	0	1	0	0	1	5
GT	0	10692	0	14102	0		14102	0	11822	0	0	14102	64820
Butane C/Wise	0	7365	0	8663	0		8793	0	8848	0	0	8878	42547
Butane Foreign	0	0	0	0	0		0	0	0	0	0	0	0
													0
Joint Exports													
No of Vessels	0	0	0	0	0		0	0	0	0	0	0	0
GT	0	0	0	0	0		0	0	0	0	0	0	0
Propane C/Wise	0	0	0	0	0		0	0	0	0	0	0	0
Propane Foreign	0	0	0	0	0		0	0	0	0	0	0	0
Butane C/Wise	0	0	0	0	0		0	0	0	0	0	0	0
Butane Foreign	0	0	0	0	0		0	0	0	0	0	0	0

	Jan	Feb	March	April	May	June	July	Aug	Sept	Oct	Nov	Dec	Total
Brent Exports													
No of Vessels	12	7	7	9	7	10	9	11	7	6	13	14	112
GT	783396	532439	462580	673978	619206	603767	689269	689420	529693	444900	823922	816973	7669543
Cargo C/Wise	165983	88613	79832	242358	238298	437184	239897	322730	160020	158205	317653	556399	3007172
Cargo Foreign	1010927	754952	677158	706657	759284	464589	852833	745163	518595	524427	836350	574051	8424986
Schiehallion Exports													
No of Vessels	1	4	2	2	3	5	5	1	2	3	0	4	32
GT	79668	266659	159260	136014	221840	328076	334424	63462	222527	221387	0	231789	2265106
Cargo C/Wise	0	0	0	0	0	87931	0	0	0	0	0	0	87931
Cargo Foreign	143752	415558	280251	243806	380968	468116	559689	83128	247130	382976	0	346549	3551923
Joint Exports													
No of Vessels	0	0	1	0	0	0	0	0	0	0	0	0	1
GT	0	0	159990	0	0	0	0	0	0	0	0	0	159990
Brent C/Wise	0	0	0	0	0	0	0	0	0	0	0	0	0
Brent Foreign	0	0	138301	0	0	0	0	0	0	0	0	0	138301
Schiehallion C/Wise	0	0	0	0	0	0	0	0	0	0	0	0	0
Schiehallion Foreign	0	0	149642	0	0	0	0	0	0	0	0	0	149642
Schiehallion Imports													
No of Ships	3	5	4	4	5	5	5	1	5	6	0	3	46
GT	226578	377630	302104	302104	377630	377630	377630	75526	377630	411834	0	205917	3412213
Schiehallion C/Wise	246444	403879	359218	307110	527237	491361	469482	89541	384072	359930	0	281530	3919804
Clair Exports													
No of Ships	0	0	0	0	1	1	0	1	1	1	1	1	7
GT	0	0	0	0	55864	57448	0	52067	52048	52196	60007	73637	403267
Cargo Coastwise	0	0	0	0	0	0	0	0	90882	0	91058	0	181940
Cargo Foreign	0	0	0	0	90392	90994	0	91182	0	91037	0	82905	446510
Ship to Ship Imports													
No of Ships	0	1	1	0	1	0	0	0	0	0	0	0	3
GT	0	62877	47274	0	72120	0	0	0	0	0	0	0	182271
STS Crude C/Wise	0	0	78878	0	0	0	0	0	0	0	0	0	78878
STS Crude Foreign	0	100041	0	0	105783	0	0	0	0	0	0	0	205824
													0
Ship to Ship Exports													
No of Ships	0	0	0	0	0	0	0	0	0	0	0	0	0
GT	0	0	0	0	0	0	0	0	0	0	0	0	0
STS Crude C/Wise	0	0	0	0	0	0	0	0	0	0	0	0	0
STS Crude Foreign	0	0	0	0	0	0	0	0	0	0	0	0	0
													0
Ship To Ship Joint Exp													
No of Ships	0	1	1	0	1	0	0	0	0	0	0	0	3
GT	0	157833	81085	0	157833	0	0	0	0	0	0	0	396751
STS Crude C/Wise	0	0	0	0	0	0	0	0	0	0	0	0	0
STS Crude Foreign	0	100041	78878	0	105783	0	0	0	0	0	0	0	284702
Brent C/Wise	0	0	0	0	0	0	0	0	0	0	0	0	0
Brent Foreign	0	179267	94521	0	158398	0	0	0	0	0	0	0	432186
Propane Exports													
No of Vessels	0	0	1	2	1	0	0	0	0	0	0	0	4
GT	0	0	12240	26342	12240	0	0	0	0	0	0	0	50822
Propane C/Wise	0	0	8672	0	0	0	0	0	0	0	0	0	8672
Propane Foreign	0	0	0	17468	8700	0	0	0	0	0	0	0	26168
Butane Exports													
No of Vessels	1	0	0	0	0	0	0	0	0	0	0	0	1
GT	18360	0	0	0	0	0	0	0	0	0	0	0	18360
Butane C/Wise	0	0	0	0	0	0	0	0	0	0	0	0	0
Butane Foreign	9036	0	0	0	0	0	0	0	0	0	0	0	9036
													0
Joint Exports													
No of Vessels	0	0	0	0	0	0	0	0	1	0	0	1	2
GT	0	0	0	0	0	0	0	0	22521	0	0	25994	48515
Propane C/Wise	0	0	0	0	0	0	0	0	0	0	0	0	0
Propane Foreign	0	0	0	0	0	0	0	0	12186	0	0	11472	23658
Butane C/Wise	0	0	0	0	0	0	0	0	0	0	0	0	0
Butane Foreign	0	0	0	0	0	0	0	0	7553	0	0	8879	16432
Total no of Crude Exports = 152 (10497906 gt)													
Total no of Schiehallion Imports = 46 (3412213 gt)													
Total Ship to Ship Imports = 3													
Total Ship to Ship Exports = 3													
Total LPG Exports = 7 (117697 gt)													
Total Crude Exported = 15988405 net metric tonnes													
Total Schiehallion Imported - 3919804 net metric tonnes													
Total LPG Exported = 83966 net metric tonnes													

Sullom Voe Port Statistics 2004

Appendix D

	Jan	Feb	March	April	May	June	July	Aug	Sept	Oct	Nov	Dec	Total
Brent Exports													
No of Vessels	10	3	12	8	10	7	11	11	10	12	5	13	112
GT	654868	282543	960351	586236	790289	543922	815749	690498	638082	726196	311085	940783	7940602
Cargo C/Wise	158978	79275	135176	79183	15801	159270	250354	162949	79870	240411	0	79689	1440956
Cargo Foreign	891737	373891	1351621	825393	1174525	695626	1072594	922570	919753	794864	479740	1233055	10735369
Schiehallion Exports													
No of Vessels	2	3	4	1	3	3	3	5	3	3	1	5	36
GT	143329	196835	294568	57456	197131	240606	218653	332499	214047	193393	79668	317814	2485999
Cargo C/Wise	81403	0	0	89483	0	0	0	0	0	0	0	0	170886
Cargo Foreign	143469	333281	506190	0	332290	439804	380404	579162	298311	343658	143119	481513	3981201
Joint Exports													
No of Vessels	1	1	0	1	1	0	1	0	0	0	2	0	7
GT	161233	160904	0	156916	159756	0	163720	0	0	0	311221	0	1113750
Brent C/Wise	0	0	0	0	0	0	0	0	0	0	0	0	0
Brent Foreign	133333	138332	0	133890	132700	0	134764	0	0	0	344270	0	1017289
Schiehallion C/Wise	0	0	0	0	0	0	0	0	0	0	0	0	0
Schiehallion Foreign	141566	142260	0	304071	149166	0	149317	0	0	0	217517	0	1103897
Schiehallion Imports													
No of Ships	6	5	5	5	5	5	5	6	4	5	6	6	63
GT	453156	377630	377630	377630	377630	377630	377630	453156	302104	377630	432495	449762	4734083
Schiehallion C/Wise	505973	456926	447840	514045	486772	442247	472912	594558	243060	381531	444214	380608	5370686
Ship to Ship Imports													
No of Ships	0	0	0	1	0	0	0	0	0	0	0	0	1
GT	0	0	0	63661	0	0	0	0	0	0	0	0	63661
STS Crude C/Wise	0	0	0	0	0	0	0	0	0	0	0	0	0
STS Crude Foreign	0	0	0	100010	0	0	0	0	0	0	0	0	100010
Ship to Ship Exports													
No of Ships	0	0	0	1	0	0	0	0	0	0	0	0	1
GT	0	0	0	146541	0	0	0	0	0	0	0	0	146541
STS Crude C/Wise	0	0	0	0	0	0	0	0	0	0	0	0	0
STS Crude Foreign	0	0	0	100010	0	0	0	0	0	0	0	0	100010
Propane Exports													
No of Vessels	0	1	0	1	0	1	0	0	0	0	1	0	4
GT	0	14102	0	12240	0	12240	0	0	0	0	11822	0	50404
Propane C/Wise	0	0	0	0	0	0	0	0	0	0	0	0	0
Propane Foreign	0	8020	0	8685	0	8667	0	0	0	0	8510	0	33882
Butane Exports													
No of Vessels	0	0	0	1	0	1	0	0	0	0	0	0	2
GT	0	0	0	18360	0	12240	0	0	0	0	0	0	30600
Butane C/Wise	0	0	0	0	0	8898	0	0	0	0	0	0	8898
Butane Foreign	0	0	0	9024	0	0	0	0	0	0	0	0	9024
Joint Exports													
No of Vessels	0	0	0	0	0	0	1	0	0	0	0	0	1
GT	0	0	0	0	0	0	15180	0	0	0	0	0	15180
Propane C/Wise	0	0	0	0	0	0	0	0	0	0	0	0	0
Propane Foreign	0	0	0	0	0	0	5645	0	0	0	0	0	5645
Butane C/Wise	0	0	0	0	0	0	0	0	0	0	0	0	0
Butane Foreign	0	0	0	0	0	0	3303	0	0	0	0	0	3303
Total no of Crude Exports = 155													
Total no of Schiehallion Imports = 63													
Total Ship to Ship Imports = 1													
Total Ship to Ship Exports = 1													
Total LPG Exports = 7													

Sullom Voe Port Statistics 2003

APPENDIX D

	Jan	Feb	March	April	May	June	July	Aug	Sept	Oct	Nov	Dec	Total
Brent Exports													
No of Vessels	11	12	8	9	8	11	8	10	7	13	9	11	117
GT	779537	803701	681346	813562	832997	756921	796212	1002968	508950	778155	696789	735590	9186728
Cargo C/Wise	75169	0	0	0	0	164688	159916	0	78425	162450	158893	157105	956646
Cargo Foreign	1169970	1089117	984223	1223106	1341044	984486	1162282	1538040	826267	1044405	851219	994600	13208759
Schiehallion Exports													
No of Vessels	3	4	3	4	3	3	3	3	2	5	3	5	41
GT	302671	249962	321020	462116	239207	185271	246648	324187	161352	368763	195089	380870	3437156
Cargo C/Wise	0	0	0	89594	0	0	0	0	0	0	0	0	89594
Cargo Foreign	369648	331481	427216	434208	422180	329154	436204	435373	286469	605493	326947	664179	5068552
Joint Exports													
No of Vessels	0	2	0	0	1	1	0	0	1	0	0	0	5
GT	0	319754	0	0	160467	161233	0	0	153911	0	0	0	795365
Brent C/Wise	0	0	0	0	0	0	0	0	0	0	0	0	0
Brent Foreign	0	332018	0	0	130607	142342	0	0	139720	0	0	0	744687
Schiehallion C/Wise	0	0	0	0	0	0	0	0	0	0	0	0	0
Schiehallion Foreign	0	229669	0	0	149661	149479	0	0	147454	0	0	0	676263
Schiehallion Imports													
No of Ships	7	5	6	6	7	4	5	4	5	6	8	8	71
GT	518839	367787	446594	453156	528682	302104	367448	302104	377630	453156	604208	583547	5305255
Schiehallion C/Wise	572355	495480	443920	577483	587414	409580	520848	402391	478906	530106	485092	496672	6000247
Propane Exports													
No of Vessels	1	1	1	0	1	1	1	1	0	2	0	0	9
GT	14102	11822	11822	0	11822	11822	15180	18503	0	29282	0	0	124355
Propane C/Wise	0	0	0	0	0	0	0	0	0	9029	0	0	9029
Propane Foreign	8493	8489	7012	0	8514	8519	9013	8990	0	8490	0	0	67520
Butane Exports													
No of Vessels	0	0	0	0	0	0	0	1	0	0	0	0	1
GT	0	0	0	0	0	0	0	18360	0	0	0	0	18360
Butane C/Wise	0	0	0	0	0	0	0	0	0	0	0	0	0
Butane Foreign	0	0	0	0	0	0	0	9020	0	0	0	0	9020
													0
Joint Exports													
No of Vessels	0	1	0	0	0	0	0	0	0	0	0	0	1
GT	0	43849	0	0	0	0	0	0	0	0	0	0	43849
Propane C/Wise	0	0	0	0	0	0	0	0	0	0	0	0	0
Propane Foreign	0	8311	0	0	0	0	0	0	0	0	0	0	8311
Butane C/Wise	0	0	0	0	0	0	0	0	0	0	0	0	0
Butane Foreign	0	6049	0	0	0	0	0	0	0	0	0	0	6049

Sullom Voe Port Statistics 2002

APPENDIX D

	Jan	Feb	March	April	May	June	July	Aug	Sept	Oct	Nov	Dec	Total
Brent Exports													
No of Vessels	15	8	10	8	7	8	10	8	8	3	10	14	109
GT	1003804	983145	921825	712303	858776	916210	790940	811357	715331	399480	1009641	1059428	10182240
Cargo C/Wise	243703	81812	157440	0	0	69296	92240	79684	88647	0	0	0	812822
Cargo Foreign	1322848	1592915	1371371	1137052	1470610	1439934	1091590	1273713	1086505	685548	1521661	1675265	15669012
Schiehallion Exports													
No of Vessels	4	3	3	4	6	4	2	3	3	2	4	5	43
GT	298315	239392	214678	273049	449785	319850	159262	219296	237842	135833	294403	354229	3195934
Cargo C/Wise	0	0	0	0	0	0	0	0	0	0	0	0	0
Cargo Foreign	507826	423538	378036	473307	656388	577774	286241	350792	431464	233349	509643	608233	5436591
Joint Exports													
No of Vessels	0	0	0	0	0	0	1	0	0	2	0	1	4
GT	0	0	0	0	0	0	159423	0	0	317306	0	158475	635204
Brent C/Wise	0	0	0	0	0	0	0	0	0	0	0	0	0
Brent Foreign	0	0	0	0	0	0	132089	0	0	252738	0	134207	519034
Schiehallion C/Wise	0	0	0	0	0	0	0	0	0	0	0	0	0
Schiehallion Foreign	0	0	0	0	0	0	149255	0	0	303957	0	148734	601946
Schiehallion Imports													
No of Ships	5	6	5	7	6	8	6	2	6	8	7	6	72
GT	377630	453156	374236	528682	453156	604208	453156	151052	453156	591084	508883	436525	5384924
Schiehallion C/Wise	509138	429603	319181	648079	536010	591505	536308	185281	600937	567647	630847	601769	6156305
									0				
Propane Exports													
No of Vessels	1	1	1	1	3	0	1	0	0	0	1	0	9
GT	15180	14102	22521	22521	48542	0	14102	0	0	0	14102	0	151070
Propane C/Wise	0	0	0	0	8365	0	2610	0	0	0	8520	0	19495
Propane Foreign	9361	7786	8862	8346	100	0	0	0	0	0	0	0	34455
Butane Exports													
No of Vessels	1	0	0	1	0	2	0	0	0	0	0	0	4
GT	14102	0	0	18360	0	11822	0	0	0	0	0	0	44284
Butane C/Wise	7652	0	0	8390	0	0	0	0	0	0	0	0	16042
Butane Foreign	0	0	0	0	0	8292	0	0	0	0	0	0	8292
Joint Exports													
No of Vessels	0	0	1	0	0	1	1	1	0	2	0	1	7
GT	0	0	23878	0	0	46021	42286	47156	0	93623	0	15180	268144
Propane C/Wise	0	0	0	0	0	0	0	0	0	0	0	0	0
Propane Foreign	0	0	8257	0	0	9583	10520	7885	0	18089	0	2697	57031
Butane C/Wise	0	0	0	0	0	0	0	0	0	0	0	0	0
Butane Foreign	0	0	7982	0	0	6991	8388	5483	0	9176	0	6276	44296

Sullom Voe Port Statistics 1999

	Jan	Feb	March	April	May	June	July	Aug	Sept	Oct	Nov	Dec	Total
Brent Exports	26	17	25	19	18	18	27	18	21	23	19	24	255
GT	1566300	1250720	1544666	1311315	1307574	1497284	1675836	1117060	1263345	1344106	1347992	1471023	16697221
Cargo C/Wise	1460815	800832	877449	367690	525922	281414	836039	1135956	995546	619059	970395	865101	9736218
Cargo Foreign	1093346	1296789	1509137	1717040	1609797	2128610	1705650	690419	995241	1528382	1183803	1494983	16953197
Schiehallion Exports	3	4	4	2	3	2	3	4	3	3	7	5	43
GT	157004	215209	213797	98519	212441	137152	209967	241031	183161	225436	428441	334277	2656435
Cargo C/Wise	89273	173640	83244	85275	0	89490	0	0	0	0	0	0	520922
Cargo Foreign	178630	178378	260430	81413	371788	149094	375605	404543	316325	380413	718591	552335	3967545
Joint Exports	0	0	0	1	1	0	0	1	1	0	0	0	4
GT	0	0	0	81135	164373	0	0	164251	164373	0	0	0	574132
Brent C/Wise	0	0	0	68940	0	0	0	0	0	0	0	0	68940
Brent Foreign	0	0	0	0	118999	0	0	136101	199610	0	0	0	454710
Schiehallion C/Wise	0	0	0	70155	0	0	0	0	0	0	0	0	70155
Schiehallion Foreign	0	0	0	0	169492	0	0	148826	89043	0	0	0	407361
Schiehallion Imports	4	4	4	6	5	5	6	5	5	5	6	8	63
GT	282143	302104	302104	453156	377630	377630	453156	377630	377630	377630	453156	604208	4738177
Schiehallion C/Wise	306655	247648	334949	398968	375297	397290	562361	460675	451130	422009	524944	653629	5135555
Propane Exports	0	3	0	1	2	1	0	3	2	1	1	2	16
GT	0	30936	0	9538	35976	23868	0	37250	26910	9445	18360	25277	217560
Propane C/Wise	0	0	0	0	0	0	0	128	0	0	0	0	128
Propane Foreign	0	22171	0	6857	20167	20102	0	18261	14247	6793	11624	18515	138737
Butane Exports	0	0	0	2	0	1	0	0	1	1	1	0	6
GT	0	0	0	23644	0	9576	0	0	9445	11822	13455	0	67942
Butane C/Wise	0	0	0	0	0	6979	0	0	7036	0	7871	0	21886
Butane Foreign	0	0	0	16149	0	0	0	0	0	8841	0	0	24990
Joint Exports	1	1	0	0	1	1	0	1	0	1	1	1	8
GT	30950	23878	0	0	22521	22521	0	23878	0	13455	26207	22521	185931
Propane C/Wise	9346	0	0	0	7103	0	0	0	0	0	10986	0	27435
Propane Foreign	0	10453	0	0	0	7358	0	5134	0	4352	0	7324	34621
Butane C/Wise	7869	0	0	0	4371	0	0	0	0	0	9942	0	22182
Butane Foreign	0	9864	0	0	0	12644	0	15313	0	3146	0	11876	52843

Sullom Voe Port Statistics 2000

	Jan	Feb	March	April	May	June	July	Aug	Sept	Oct	Nov	Dec	Total
Brent Exports													
GT	1388756	1183153	1259913	1110613	1417623	1117718	796994	1109732	1056482	1090793	918826	1114006	13564609
Cargo C/Wise	728790	433604	855988	540354	382014	693058	68297	177608	150455	511522	179023	315638	5036351
Cargo Foreign	1477724	1348641	1109375	1211615	1748875	1069417	1149350	1613248	1548577	1195830	1215012	1427242	16114906
Schiehallion Exports													
GT	328005	249670	218122	164373	321470	266276	236555	478743	301416	371948	335760	271832	3544170
Cargo C/Wise	0	0	0	0	0	0	0	0	0	0	90084	0	90084
Cargo Foreign	549200	897540	328832	148497	580780	447477	428883	842628	523214	519739	470302	454319	6191411
Joint Exports													
GT	0	0	318231	273587	0	0	156408	0	0	0	0	79718	827944
Brent C/Wise	0	0	0	0	0	0	0	0	0	0	0	0	0
Brent Foreign	0	0	270411	274152	0	0	131731	0	0	0	0	44451	720745
Schiehallion C/Wise	0	0	0	0	0	0	0	0	0	0	0	0	0
Schiehallion Foreign	0	0	255656	231119	0	0	142017	0	0	0	0	93608	722400
Schiehallion Imports													
GT	377630	453156	453156	377630	370842	364054	528682	528682	453156	663167	453156	442974	5466285
Schiehallion C/Wise	460478	514421	596409	433696	449366	466541	619412	566768	457171	611417	546326	527806	6249811
Propane Exports													
GT	0	26910	0	26255	0	0	13455	0	46216	0	0	53387	166223
Propane C/Wise	0	235	0	0	0	0	0	0	4956	0	0	0	5191
Propane Foreign	0	9280	0	19903	0	0	9743	0	24980	0	0	17365	81271
Butane Exports													
GT	9367	0	0	0	0	0	0	0	12183	0	0	0	21550
Butane C/Wise	6991	0	0	0	0	0	0	0	8962	0	0	0	15953
Butane Foreign	0	0	0	0	0	0	0	0	0	0	0	0	0
Joint Exports													
GT	22521	0	33508	0	34946	50725	0	25695	0	0	23878	29052	220325
Propane C/Wise	0	0	0	0	0	0	0	0	0	0	9594	0	9594
Propane Foreign	9969	0	14917	0	16150	14649	0	6281	0	0	0	5629	67595
Butane C/Wise	0	0	0	0	0	0	0	0	0	0	10757	0	10757
Butane Foreign	7352	0	15470	0	16415	13801	0	12817	0	0	0	13670	79525

Sullom Voe Port Statistics 2001

APPENDIX D

	Jan	Feb	March	April	May	June	July	Aug	Sept	Oct	Nov	Dec	Total
Brent Exports													
No of Vessels	20	13	19	15	17	14	13	16	13	13	13	15	181
GT	1333060	966511	1084720	1098420	1252476	929283	1057098	1156469	808274	919033	846540	1127587	12579471
Cargo C/Wise	431962	78966	304870	153885	262559	257555	158560	231455	157256	342621	154459	244382	2778530
Cargo Foreign	1504688	1290648	1334574	1574639	1708512	1164645	1588793	1513353	1104939	1028389	1204756	1586093	16604029
Schiehallion Exports													
No of Vessels	4	3	4	3	3	3	3	1	4	4	2	3	37
GT	295175	191073	337490	237875	239186	217670	323740	79718	478264	294286	156322	239209	3090008
Cargo C/Wise	0	0	0	131154	0	0	0	0	0	0	0	0	131154
Cargo Foreign	524874	309054	574244	289071	432145	373017	435177	141888	583365	524038	282344	422481	4891698
Joint Exports													
No of Vessels	0	1	0	1	0	0	0	0	0	0	1	1	4
GT	0	79832	0	153407	0	0	0	0	0	0	156215	80187	469641
Brent C/Wise	0	0	0	0	0	0	0	0	0	0	0	0	0
Brent Foreign	0	67317	0	125185	0	0	0	0	0	0	160523	46922	399947
Schiehallion C/Wise	0	0	0	0	0	0	0	0	0	0	0	0	0
Schiehallion Foreign	0	72473	0	144002	0	0	0	0	0	0	108562	93579	418616
Schiehallion Imports													
No of Ships	7	4	7	5	7	5	7	5	7	6	5	7	72
GT	528682	302104	528682	377630	528682	377630	528682	377630	528682	446368	374236	528682	5427690
Schiehallion C/Wise	563017	414399	562622	423564	555868	399487	563767	349567	514643	486274	413625	532040	5778873
Propane Exports													
No of Vessels	0	0	1	1	0	1	1	0	0	0	0	1	5
GT	0	0	18503	12800	0	15180	22521	0	0	0	0	10692	79696
Propane C/Wise	0	0	0	0	0	9214	0	0	0	0	0	0	9214
Propane Foreign	0	0	10455	9972	0	0	19565	0	0	0	0	7185	47177
Butane Exports													
No of Vessels	0	0	0	1	0	1	0	0	0	1	0	1	4
GT	0	0	0	12800	0	15180	0	0	0	12800	0	15180	55960
Butane C/Wise	0	0	0	0	0	9687	0	0	0	9454	0	8400	27541
Butane Foreign	0	0	0	10278	0	0	0	0	0	0	0	0	10278
Joint Exports													
No of Vessels	0	2	0	0	0	0	0	0	0	0	1	0	3
GT	0	55973	0	0	0	0	0	0	0	0	45032	0	101005
Propane C/Wise	0	0	0	0	0	0	0	0	0	0	0	0	0
Propane Foreign	0	18969	0	0	0	0	0	0	0	0	12443	0	31412
Butane C/Wise	0	0	0	0	0	0	0	0	0	0	0	0	0
Butane Foreign	0	19222	0	0	0	0	0	0	0	0	13983	0	33205

Ports & Harbours Operations

Abstract of Weather Caused Delays at 31 October 2007

	Monthly Totals			Cumulative Totals		
	Days	Hours	Mins	Days	Hours	Mins
Berthing Suspension	04	09	42	30	15	56
Unberthing Suspension	00	00	00	00	00	00
Loading Suspension	00	00	00	00	20	00
Boatwork Suspension	03	06	00	06	09	36
Pilotage Suspension	00	00	00	00	00	00
Helicopter Usage	00	00	00	00	00	00
Tug/Pilot Standby	00	00	00	00	00	00
Total Disruption - all Causes	07	00	18	39	18	00
Actual Delays Due to Weather	02	01	42	03	21	06

**Fish Landing Statistics - Scalloway
2007/2008**

APPENDIX F

FISH LANDINGS - SCALLOWAY		APRIL	MAY	JUNE	JULY	AUG	SEPT	OCT	NOV	DEC	JAN	FEB	MARCH		TOTAL
Fish Landed Through Market (Boxes)		1440	2559	4523	3572	2655	6203								20952
Consigned Fish (Boxes)		0	0	0	0	0	0								0
Mackerel Landings		0		0	293.25	313.5	0								
TOTAL NO OF BOXES - (Boxes)		1440	2559	4523	3572	2655	6203	0	0	0	0	0	0		20952

DUES PAID ON FISH LANDINGS		PERIOD	PERIOD	PERIOD	PERIOD	PERIOD	PERIOD	PERIOD	PERIOD	PERIOD	PERIOD	PERIOD	PERIOD		
(Rate = £0.025 per £1.00 Value)		00/01	00/02	00/03	00/04	00/05	00/06	00/07	00/08	00/09	00/10	00/11	00/12		TOTALS
LHD Ltd		1307.72	658.67	8583.54	4659.89	6179.26	4981.37								26370.45
Other (Consigned Fish)		580.38	0	907.35	0	0	0								1487.73
Mackerel Landings		0	0	0	0	12.53	252.76								
TOTAL FOR LEDGER PERIOD		1888.10	658.67	9490.89	4659.89	6191.79	5234.13	0.00	0.00	0.00	0.00	0.00	0.00		28123.47

Salloway Harbour
Wharfage Charges 2007/2008

APPENDIX G

WHARFAGE - Imports		APRIL	MAY	JUNE	JULY	AUG	SEPT	OCT	NOV	DEC	JAN	FEB	MARCH		TOTAL (tonnes)
Inward - Tonnes (Misc)		1730.500	884.440	596.230	808.607	36.000	1515.565								5571.342
Salmon Nets - Tonnes (In)		30.000	40.000	75.000	70.000	35.000	35.000								285.000
Fish Feed - Tonnes (In)		367.000	370.000	411.000	168.000	289.000	48.000								1653.000
TOTAL CARGO		2127.500	1294.440	1082.230	1046.607	360.000	1598.565	0.000	0.000	0.000	0.000	0.000	0.000		7509.342

WHARFAGE - Exports		APRIL	MAY	JUNE	JULY	AUG	SEPT	OCT	NOV	DEC	JAN	FEB	MARCH		TOTAL (tonnes)
Tonnes (Misc)		179.000	231.000	0.000	1404.000	793.000	145.000								2752.000
Ice Loaded		0.000	0.000	173.140	0.000	0.000	242.340								415.480
Gas Oil Bunkers		0.000	361.942	880.930	226.046	447.896	865.282								2782.096
Fish Feed		573.500	810.500	880.000	1488.750	1879.000	1170.000								6801.750
Salmon Nets		16.000	16.000	18.000	20.000	0.000	6.000								76.000
TOTAL		768.500	1419.442	1952.070	3138.796	3119.896	2428.622	0.000	0.000	0.000	0.000	0.000	0.000		12827.326

**Other Small Piers/Harbours
(Part 2 - Harbours)
Summary Management Accounts - Revenue
April to Sept 2007**

Appendix I

	Annual Budget 2007/2008	Actual April to Sept	Variance (Adverse)/Favourable
All Income	(42,525)	(37,025.87)	(5,499.13)
Total Income	<u>(42,525)</u>	<u>(37,025.87)</u>	<u>(5,499.13)</u>
Employee Costs	29,631	12,527.82	17,103.18
Agency Payments	-	-	-
Property And Fixed Plant	68,394	12,803.21	55,590.79
Supplies and Services	15,394	548.92	14,845.08
Transport and Mobile Plant	84,100	4,353.93	79,746.07
Administration	-	-	-
Total Expenditure	<u>197,519</u>	<u>30,233.88</u>	<u>167,285.12</u>
Net Revenue Expenditure/(Income)	<u>154,994</u>	<u>(6,791.99)</u>	<u>161,785.99</u>

NB Financing Costs and Recharges are not included in the above figures, as these are dealt with separately at the year end. The above is "controllable costs".

SCALLOWAY HARBOUR
Summary Management Accounts - Revenue
April to Sept 2007

Appendix H

	Annual Budget 2007/08	Actual April to Sept	Variance (Adverse)/Favourable
Fish Landing Dues	(30,000)	(28,123.47)	(1,876.53)
Other Dues/Charges	(204,175)	(187,978.12)	(16,196.88)
Total Income	(234,175)	(216,101.59)	(18,073.41)
Employee Costs	170,622	93,688.12	76,933.88
Administration	23,700	12,720.54	10,979.46
Agency Payments	2,000	414.19	1,585.81
Property and Fixed Plant	104,797	26,978.80	77,818.20
Supplies & Services	18,810	594.17	18,215.83
Transport and Mobile Plant	66,759	15,094.87	51,664.13
Total Expenditure	386,688	149,490.69	237,197.31
Net Revenue			
Expenditure/(Income)	152,513	(66,610.90)	219123.90

NB Financing Costs and Recharges are not included in the above figures, as these are dealt with separately at the year end. The above are "controllable costs"