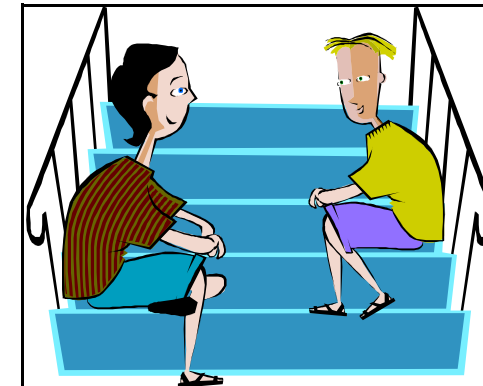
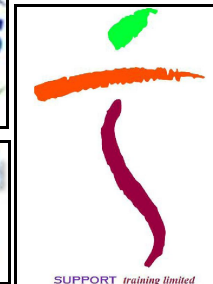


For more information  
please contact:

Idamay Brill,  
SIC Housing  
Tel: 07825089127

# Focused Futures

## Fulfilling your potential



### Supported Accommodation

#### About us

Focused futures is a new Shetland Initiative developed by a range of local agencies to support young homeless people.

The project is designed to develop your skills to provide help to enable you to obtain employment, training, a college place or volunteering opportunities.

You will create a personal plan which will help you to improve your understanding of yourself, where you are now and how to work towards where you want to be.

## Are you ready for a change?

- Are you age 16-25?
- Are you homeless or do you have an SIC or Hjalmland Tenancy?
- Do you need support to develop your skills to move into employment?

## The Accommodation

- You can be a part of the project if you live in your own tenancy or you can be provided with a place at 51 Burgh Road (this is shared supported accommodation providing furnished tenancies).
- The application process is as straight forward as we can make it. All applicants fill in an application form which you can get from SIC Housing Services. Support to complete the form is available if you need it.
- Following the selection process if you have been successful you will sign a tenancy agreement if you are moving into Burgh Road.



## What does it cost?

- If you are already living in your own tenancy there are no additional costs for being part of the project.
- In Burgh Road you will have to pay rent for your accommodation. If you are eligible you may get Housing Benefit to cover this. You will be responsible for electricity, council tax and other household costs.



## Your Personal Plan—your choices

### Support Training

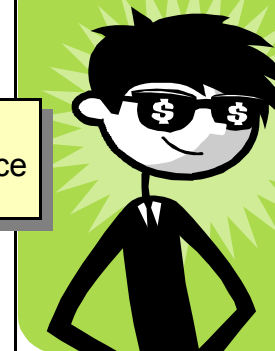
- Computer training
- Health and Safety Training
- Get Ready for Work

### Shetland College

- Cooking skills
- One to one support
- Short Courses

### Careers

- Career Guidance



### Bridges

- Outdoor Activities
- Work Skills
- Developing a CV

### Moving on Employment Project

- Work Experience
- Job Crews
- Team Building

### Adult Literacy

- Help with Reading and Writing

You can take part in a range of activities and will be supported by staff to develop your own plan. You will also receive support to enable you to cope with living in your own place, learning the skills you need e.g. cooking, cleaning, budgeting.

You will be encouraged to express and share your views about what you think about the project and how you feel you are doing. Staff will be there to support and encourage you.