

# Shetland Islands Council



## Draft Criminal Justice Executive Summary 2006-07

## **Section 1. Introduction**

In May 2001, Shetland Islands Council produced its first three-year strategic plan for Criminal Justice Social Work Services within Shetland, covering the period 2002-2005. This was followed by two significant consultation periods in which the future delivery of criminal justice social work services has been debated.

In 2004, Ministers acknowledged that due to the uncertainties over the arrangements for the future delivery of criminal justice social work services, it would not be possible to complete strategic plans for a further three year period. Ministers agreed that the existing 3-year plan should be rolled forward for a further 12 months. This has now been extended for a further 12-month period to cover 2006-07. It is hoped that by the end of this period, the new structure for the management of sentenced offenders will be in place.

The current consultation refers to the creation of Criminal Justice Authorities (CJAs), which will be in place in 2007. The Management of Offenders etc. (Scotland) Bill lays out detailed legislative measures to improve the management of offenders. It includes the proposal to establish CJAs, placing new duties on local government and Scottish Ministers, through the Scottish Prison Service, to work much more closely together in the development and implementation of plans for the management of sentenced offenders. It is proposed that Shetland, Orkney and Western Isles join Aberdeen City, Aberdeenshire, Moray and Highland and become the Northern CJA.

There are opportunities within this proposal for the development of service in areas such as strategic planning, developing and sharing resources, dissemination of good practice and improved links with the Scottish Prison Service. However, the CJA will be responsible for the allocation of funds and it is a great threat that they will direct more funding towards inner city problem areas and less to the Island Authorities. As any reduction in funding will result in staff losses, this will directly affect the quality of the management of offenders within Shetland.

This plan will build on the good practice that has taken place over the past 12 months, as well as addressing what we hope to achieve during 2006 –2007. We hope to develop public confidence in the role Criminal Justice Services play in community safety by demonstrating that the services are responsive to local needs, integrated with other appropriate services and bring national criminal justice priorities to a local level. The priority is for provision of effective risk assessment and management of offenders within the community, whilst maintaining community safety. The services outlined are committed to the social inclusion and rehabilitation of offenders as a positive approach in the prevention of offending behaviour and maintenance of crime free lifestyles.

## Section 2: Mainstream Services

- Court Services
- Social Enquiry Reports
- Probation
- Community Service
- Through care
- Supervised Attendance Orders
- Diversion from Prosecution Scheme
- Bail Services
- Drug Treatment and Testing Orders

This section explains the main community-based services which are available to offenders subject to statutory orders imposed by the Lerwick Sheriff Court, Procurator Fiscal Service and Courts on mainland Scotland. The majority of these services are used when an offender does not require to be sent to Prison. They enable the offender to be supervised within their own community and work is undertaken to address and reduce the offending behaviour. There has been a significant increase in several areas of criminal justice work over the past 4 years and this is highlighted in Appendix 1.

Community Service Orders continue to be used on a regular basis as a direct alternative to prison. This sentence enables offenders to repay the community for their crimes through unpaid work. A guide to the types of work undertaken by offenders can be viewed in Appendix 2.

The Service's focus during 2004–05 has been the consistency in the assessment and supervision of offenders, the implementation of a Bail Information and Supervision Scheme in October 2004 and the introduction of Drug Treatment and Testing Orders in July 2005.

Criminal Justice Social Work Services have to maintain minimum standards set by the Scottish Executive and Shetland Islands Council is pleased to announce that these standards have been met and are exceeded in the area of probation contacts.

Sheriff Napier, who was installed as the resident Sheriff for Shetland and Orkney in May 2004 has expressed an active interest in the functions and performance of criminal justice social work services and has been very supportive of new initiatives. Quarterly meetings take place with the Sheriff in order to discuss court services and the management of offenders in the community. A sentencer feedback form has been in operation during the past year and Sheriff Napier has kindly provided feedback on all Social Enquiry Reports presented to him. The feedback received was positive and highlighted that reports being submitted to Lerwick Sheriff Court are of a consistent quality.

## **Strategic Targets for 2006-07**

Due to the increase in workload it is becoming increasingly difficult to maintain the current level of contact and programmed work with offenders on probation. In order to make the management of offenders in the low to medium risk group more effective it is proposed that there will be an increase in offenders working in groups rather than one to one work. Due to the difficulty of running group work programmes within such a small-populated area it is proposed that:

a) All offenders will be seen in accordance with national standards but that the level of contact after the initial six-week period will become more flexible in order for the offender to undertake group work at a later date. For example, an offender may be seen weekly for six weeks and then fortnightly until a group programme starts, the offender will then revert to weekly contact.

b) An audit of offending behaviour in Shetland highlights two common denominators - alcohol and anger. The focus of group work programmes for 2006 –07 will be:

- Alcohol Awareness Programme
- Anger Management Programme

The proposed action plan for 2006-07 is in Appendix 3.

## **Section 3: Public Protection and Community Safety**

This section focuses on areas such as the assessment and management of high risk and sexual offenders; vulnerable groups of offenders for instance women and young people, substance misusers and those suffering from mental disorders. It emphasises Shetland Islands Council's commitment to public protection and safety through effective risk assessment, management of offenders, and strong working relationships with other agencies. One example that demonstrates good working relations is the operation of the Shetland multi agency sex offender protocol.

Areas of development within the substance misuse field include the introduction of the Drug Treatment and Testing Orders that are co run by the Shetland Community Drug Team and the NHS Shetland community based detoxification programme.

## **Strategic Targets for 2006-07**

- Inter agency review of the management of sex offenders in the community in light of recent inquiries and legislative changes.

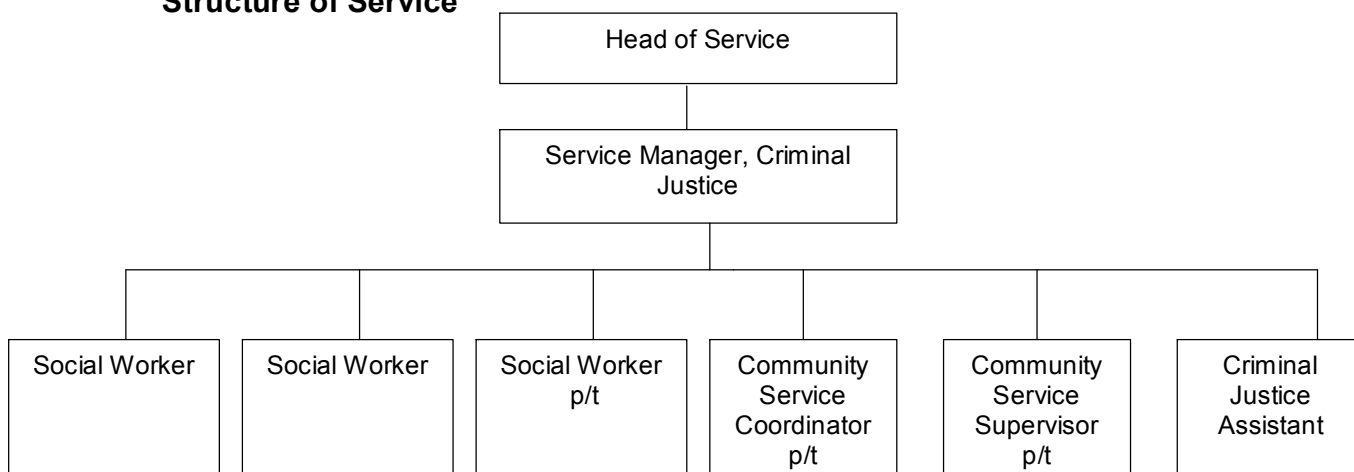
## Section 4 and 5: Effective Practice, Delivery Mechanisms, and Resources

These sections address the Criminal Justice Social Work Service's commitment to the development and improvement of service delivery to the Shetland Community. It describes how services are currently monitored and evaluated and addresses the training needs of team members and how criminal justice services are financed.

Criminal justice social work services are 100% funded by the Scottish Executive and the current level of funding is required in order to provide a viable service. All service developments are met within the existing budget and highlights that this service strives to provide best value for money.

The Social Work Service has experienced significant management changes over the past 4 years. Following a two-year period without a Head of Service during 2002-04, the position was filled in November 2004. This enabled the management team to redefine priorities and strategic goals and offered some stability. Unfortunately, the post holder is due to leave Shetland in September 2005 and a temporary Head of Service has already commenced. The consequences of this, in addition to recruitment difficulties to child care and community care services, on such a small department has been arduous and it is to the various services credit that they maintained a high standard of service delivery during such a difficult period. At present, the criminal justice team is fully staffed and it is felt that there is now a good balance of knowledge and skills within the team, which enables effective service delivery.

### Structure of Service



## Work Flow

## Appendix 1

The following tables give some basic indication to the changes in workflow over the past four years.

TABLE 1 reflects the main types of community-based sentences used by Lerwick Sheriff Court. The figures represent the number of new orders that were made over the last four years, following the completion of a Social Enquiry Report.

TABLE 1 also shows that over the past four years there has been a minimum of 100% increase in all community-based disposals. In comparison there has been a decrease in the number of SERs and monetary penalties, which suggests that the Court is not requesting reports for those individuals who have been identified as being suitable for a fine or compensation order. Therefore targeting reports to those offenders whose crime warrants community supervision.

**TABLE 1**

<b>Community Based Sentences</b>		<b>01/02</b>	<b>02/03</b>	<b>03/04</b>	<b>04/05</b>
A	Number of Social Enquiry Reports	101	88	131	99
B	Number of clients starting on Probation / Intensive Probation	16	18	23	37
C	Number of clients starting on Community Service	15	18	28	30
D	Number of Restriction of Liberty Order Assessments	0	1	1	17
E	Number of Supervised Attendance Orders	2	0	0	2

TABLE 2 reflects the main types of sentence used by Lerwick Sheriff Court that does not require social work supervision but were made following the completion of a Social Enquiry Report.

**TABLE 2**

<b>Community Based Sentences</b>		<b>01/02</b>	<b>02/03</b>	<b>03/04</b>	<b>04/05</b>
F	Number of Custodial Sentences	18	12	19	11
G	No of Monetary Penalties arising from SERs	38	42	64	22
H	No of Deferred Sentences arising from SERs	18	4	0	3

## Community Service Placements

## Appendix 2

Placements	2003-04	2004-05
Private Homes of Disabled/Elderly	9 x Painting and Gardening	5 x Painting, Furniture Removal, General Repairs
Environmental Projects	3 x Gardening and Clearance	8 x Gardening
	1 x Community Park Painting	2 x Craft work
		2 x Soak away Digging
		1 x Fencing
		1 x Beach Clearing (ongoing throughout year)
		1 x Archaeological Dig
		1 x Sign Erection
Medium Projects	1 x Citizens Advice Bureau External Painting	1 x Playgroup Internal Painting and Varnishing Floor
	3 x Playgroups/Nursery Internal Repair, Painting and Varnishing of Floors	
	1 x Outdoor Centre Internal Painting	
Large Projects	3 x Community Halls External and Internal Repair and decorating	2 x Community Halls External and Internal Painting
	1 x Youth Centre Internal Repair and Decorating	1 x Church Repairs and Painting
Individual Placements	1 x social work residential establishment 4 x Cope Ltd	1 x welfare trust residential establishment 8 x Cope Ltd

Total hours of unpaid work in 2003-04 = 4870

Total hours of unpaid work in 2004-05 = 4305

**Action Plan**

**Appendix 3**

	<b>Task</b>	<b>Service/Agency</b>	<b>Timetable</b>	<b>Resources</b>
<b>2006-07</b>	<b>Review the management of sex offenders</b>	Criminal Justice Team and Sex Offender Management Group	<b>February 2006</b> Interagency Agreement of the adoption of recommendations from the North Lanarkshire Inquiry	Existing
		Criminal Justice Team	<b>May 2006</b> Implementation of protocols for the sharing of information and management of sex offenders	Existing
	<b>Drug Testing and Treatment Orders</b>	Criminal Justice Team, SCDT, SADAT, Court User Gp	<b>August 2006</b> Review of DTTO Scheme	Existing
	<b>Probation Service</b>	Criminal Justice Team	<b>January 2007</b> Review changes to programmed work and client contact	Existing