

What happens next?

After circulating this newsletter, the first step will be to send practitioners and managers a pack of GIRFEC related material. This will introduce the basic concepts and models that GIRFEC uses, as well as the way this is being implemented in Shetland Islands Council.

The GIRFEC process and materials will be introduced for newly born babies, children who are Looked after and children/young people with a coordinated support plan. This will be as soon as possible.

This will be followed by a rollout of GIRFEC in Lerwick and Bressay, and then in Central and West Mainland. Finally GIRFEC will be implemented in North Mainland and the remaining islands.

The training and preparation for these changes will include various methods:

- Awareness raising via relevant documentation.
- Direct training, which will initially be aimed at those likely to become a Named Person or Lead Professional.
- Help and Support which can be offered one to one or on a team basis. There will also be guidance on the Shetland GIRFEC website to give further detail on particular topic, and links to the National GIRFEC documentation.

The Shetland GIRFEC website is going to be updated with new and updated materials, all of which will be downloadable. The Project Manager and Project Assistant will continue to be available to offer advice and assistance.

Contact Details

GIRFEC Project Team

Rob Lamey, Project Manager
Email: rob.lamey@shetland.gov.uk

Michael Rattray, Project Assistant
Email: michael.rattray@shetland.gov.uk

GIRFEC Project Team
22–24 North Road
LERWICK
ZE1 0NQ

Telephone: 01595 744998

Website: www.shetland.gov.uk/socialwork-health/iafpilot.asp

This will be the Shetland Island Council GIRFEC website. It is for everyone so please explore the website. You will find guidance and all the GIRFEC documentation here. It is all downloadable and printable too. If you have any comments about what's available on the website please contact the Project Manager.

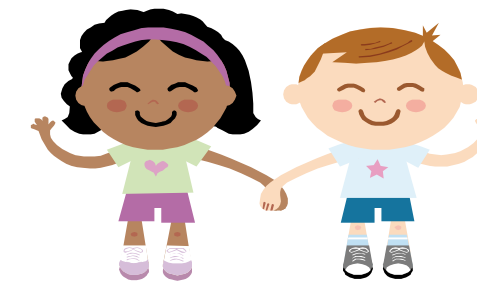


GIRFEC Project Board

In Shetland, we have established a GIRFEC Project Board. The Board consists of senior managers who are committed to implementing GIRFEC in Shetland.

- ☺ Dr Sarah Taylor—NHS Shetland.
- ☺ Chief Inspector Malcolm Bell—Northern Constabulary.
- ☺ Kate Gabb—Scottish Children's Reporter Administration.
- ☺ Catherine Hughson—Shetland Council of Social Service.
- ☺ Hazel Sutherland—SIC Education & Social Care.
- ☺ Helen Budge—SIC Schools Service.
- ☺ Stephen Morgan—SIC Children's Services.

Getting it right for every child in Shetland Newsletter



Issue 4
May 2009

What is the IAF, and what is GIRFEC?

IAF stands for the Integrated Assessment Framework.

The Integrated Assessment Framework is a new approach to identifying and meeting the needs of children and young people. The Integrated Assessment Framework puts the wellbeing of children and young people at the centre. A common coordinated framework for assessment, planning and action across all agencies is used to address needs.

The Integrated Assessment Framework recognises that children have the right to be consulted about decisions that affect them. Children and young people should get the help they need to keep them safe and achieve good outcomes. The Integrated Assessment Framework aims to have a single plan for each child in need, reducing duplication of effort and making it easier for children and their carers to participate in planning and meeting their needs. It is founded on the right amount of help at the right time.

The Integrated Assessment Framework has been Shetland's way of implementing *Getting it right for every child* (GIRFEC).

Getting it right for every child is a national programme that is being designed by the Scottish Executive and put into practice locally.

Presently, the Integrated Assessment Framework is being piloted in the South Mainland. We are learning from what has happened so far, considering improvements, and moving to the next phase. The Integrated Assessment Framework and *Getting it right for every child* are still being developed and revised in the light of experience.

One of the changes already agreed is that we are dropping the term IAF, in favour of *Getting it right for every child* (GIRFEC). Using the term GIRFEC reflects more accurately that this is a programme for every single child, not only those who need an assessment.



Inside this issue:	
Pilot Review	2
Getting it right for every child	3
What happens next?	4
Contact Details	4



Northern Constabulary

The Pilot Review

A review of progress in the South Mainland pilot took place December 2008 - February 2009. This involved speaking to, and getting feedback from parents and practitioners. There was also a questionnaire sent to staff. The IAF documentation was looked at, to see how well it was working.

Outcome

- The main outcome was that everyone felt that idea of the IAF was good, and hoped it would lead to the needs of children/young people being met better in the future.
- Parents felt that it was really good to have an action plan, so that it was clear what was happening, and who was doing what.
- The consent form regarding information sharing was working very well.
- A number of children/young people have been identified as requiring a coordinated plan, and these have been put into place.
- It was too early to tell if the IAF was producing better outcomes for children/young people.

Some issues were identified which require further attention:

- Some of the forms appeared very long and hard to use.
- Potentially there were a lot of forms to fill in.
- Some of the IAF meetings were proving time consuming to arrange. It was felt that administrative support would make this run much more smoothly.
- Lead Professionals were chairing the meetings, but it was proving challenging to do this and take minutes at the same time.

Changes

The Project Board met to consider the review and the next steps to take.

As a result:

- Documentation is to be streamlined.
- Consideration to be given to administrative support.
- Name change from IAF to GIRFEC agreed.
- A plan for GIRFEC implementation across Shetland has been agreed.



getting
it right
for every child

Getting it right for every child

"Getting it right for every child" is a national programme. It has the ambitious aim of improving outcomes for children. GIRFEC is an ongoing development. Several local authorities have been involved with developing policies, tools and guidance. From this have arisen new concepts:

- Named Person - every child has a practitioner who acts as central person for record keeping and communication.
- Lead Professional - who coordinates involvement when there is a multi-agency plan.

In Shetland we started to implement some of these ideas, calling it the "Integrated Assessment Framework", or IAF. The time is now right to broaden the approach and start using the term "Getting it right for every child" (GIRFEC).

"Getting it right for every child" is not a finished product. It is continuing to evolve through experience. This is equally true of both the national programme, and GIRFEC/ IAF in Shetland.

Consequently the materials and processes will not remain static. The best source for up to date local information will be the Shetland GIRFEC website, which will have a section which highlights any changes as they occur.

All of the changes will however be consistent with the core GIRFEC components, which unlikely to change:

- Promoting the wellbeing of individual children and young people.
- Keeping children and young people safe.
- Putting the child at the centre.
- Taking a whole child approach.
- Building strengths and promoting resilience.
- Promoting opportunities and valuing diversity.
- Providing additional help should be appropriate, proportionate and timely.
- Supporting informed choice.
- Working in partnership with families.
- Respecting confidentiality and sharing information.
- Promoting the same values across working relationships.
- Making the most of bringing together each worker's expertise.
- Coordinating help.
- Building a competent workforce to promote children and young people's wellbeing.

