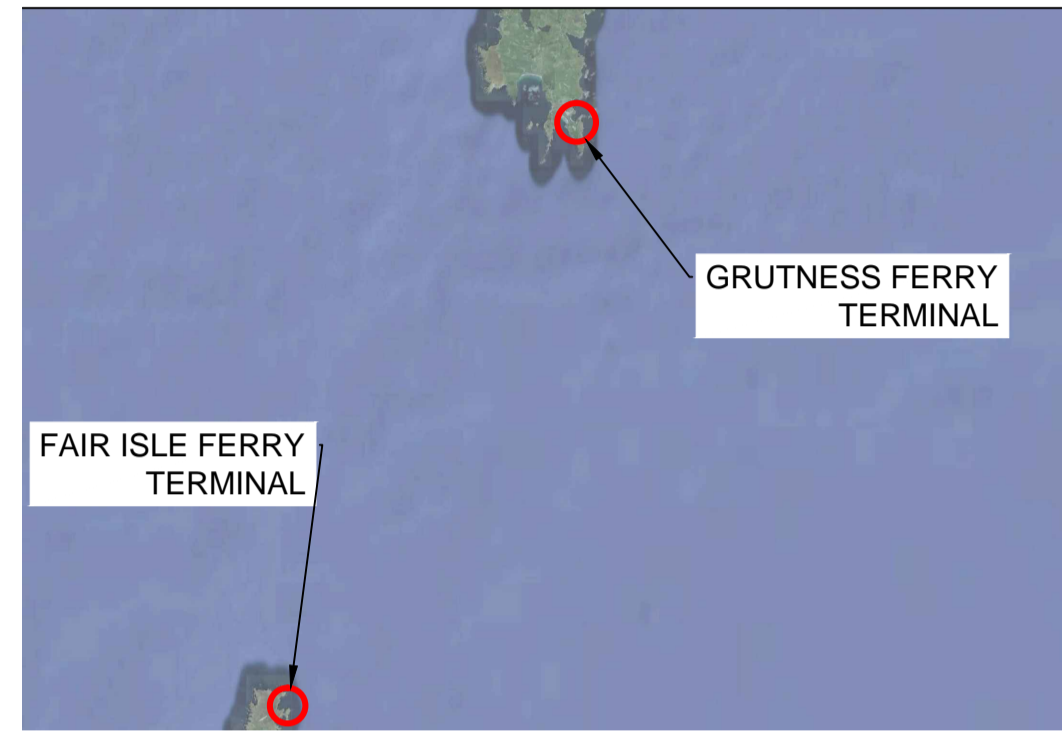




GRUTNESS

NTS

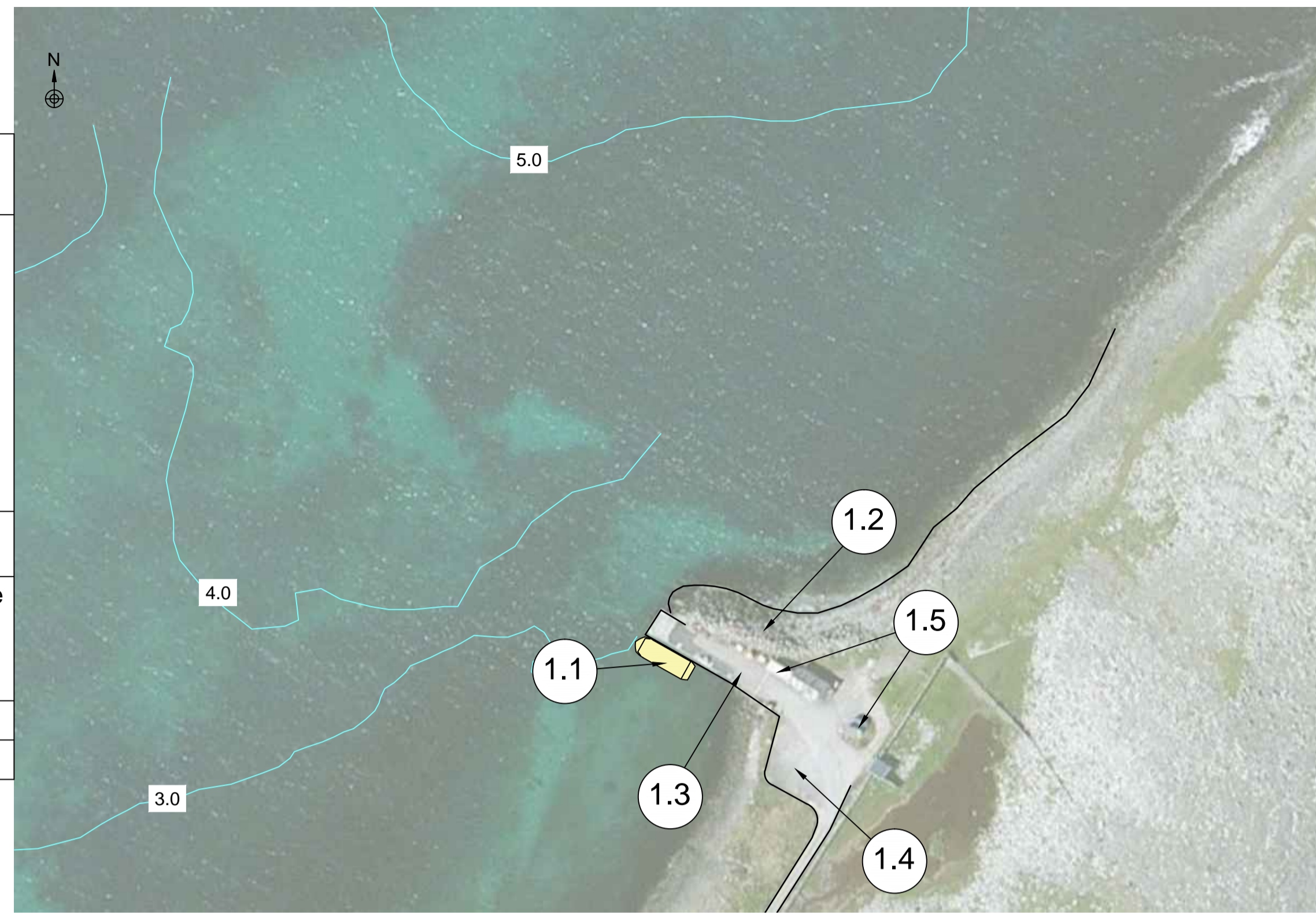


GRUTNESS FERRY TERMINAL

FAIR ISLE FERRY TERMINAL

NTS

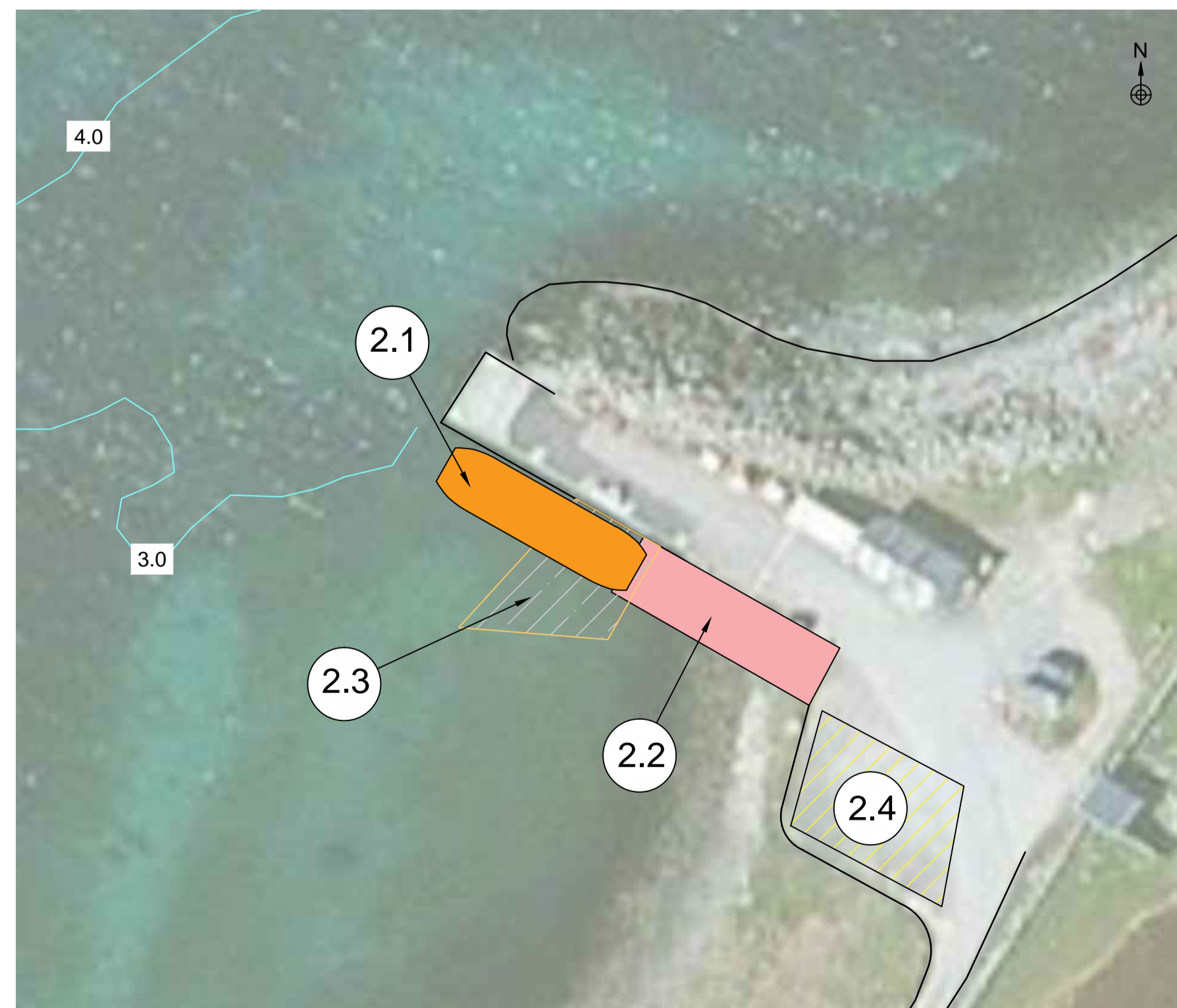
1) CURRENT CONDITION		
1.1	Current Main Vessel	MV GOOD SHEPHERD IV Size: • Loa = 18 m • Beam = 6 m • Draught = 2.63 m Capacity: • 12 passengers • 1 PCU
1.2	Breakwater	Rubble and armourstone revetment to protect the quay (approx. 45m long)
1.3	Ferry Berth	• 50 m long solid quay constructed from a concrete grillage with a rock infilling. • The quay is faced with a row of vertical D section rubber fenders.
1.4	Parking/waiting area	None dedicated
1.5	Facilities	Toilet, waiting room & freight store



Scale approx. 1:1250

2) RO-RO OPTION	
Terminal upgrades	
2.1	Vessel Specific vessel <i>Catamaran</i> type: • Loa = 20-22 m • Beam = 6 m • Draught = 1.5 m Capacity: • 12 passengers • 6 PCU
2.2	Hard ramp Provide the quay with a hard ramp (block). See note 7. Please note that the block arrangement is suitable for operations under an specific tide level range and under calm conditions.
2.3	Dredging Some minimum dredging may be required in the vicinity of the ramp.
2.4	Parking/waiting area Recommended provision of dedicated parking/waiting area.

2) OVERNIGHT BERTH	
Terminal upgrades	
3.1	Overnight berth • If additional sheltering is required the existing breakwater could be extended. • Provision of bollards and fenders for overnight berthing.



Scale approx. 1:500



Scale approx. 1:1000

NOTES:

1. COPYRIGHT BECKETT RANKINE, EXCEPT WHERE NOTED OTHERWISE. THIS DRAWING, DESIGN AND CONCEPT IS CONFIDENTIAL AND MAY NOT BE REPRODUCED, MANUFACTURED OR EXPLOITED IN WHOLE OR PART WITHOUT WRITTEN CONSENT.

2. THIS DRAWING IS FOR THE SOLE USE OF THE NAMED CLIENT FOR THE PURPOSE SHOWN.

3. DIMENSIONS ARE NOT TO BE SCALED FROM THIS DRAWING. ALL DIMENSIONS ARE IN MILLIMETRES UNLESS OTHERWISE INDICATED.

4. OFFICIAL ISSUES OF THIS DRAWING ARE IN PAPER OR PDF FORMAT ONLY. DWG FORMAT FILES ARE FOR REFERENCE ONLY.

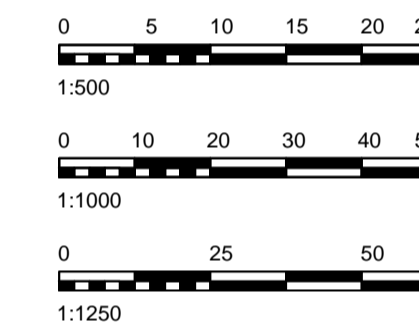
5. IMAGERY FROM GOOGLE EARTH.

6. BED LEVELS FROM DRAWINGS PROVIDED BY THE CLIENT REFERRED TO CD.

7. ALL STRUCTURES REQUIRE FURTHER ASSESSMENT TO ESTABLISH NECESSARY REPAIRS/STRENGTHEN WORKS OR COMPLETE REPLACEMENT TO COMPLY WITH A 30 YEARS SERVICE LIFE.

SHETLAND TIDAL LEVELS

LOCATION	MHWS	MHWN	MLWN	MLWS
Grutness	1.8	1.4	0.7	0.4



Reference Drawings:

Rev	Date	Details
A	14/06/16	PBA comments

Client:



Project:
SHETLAND INTER-ISLAND TRANSPORT STUDY

Title:
GRUTNESS OPTIONEERING



47 Gillingham Street
Westminster, London SW1V 1HS

www.beckettrankine.com

Status:	Scale at A1 Original:
FOR DISCUSSION	AS SHOWN
Drawn: DP	Checked: GR
	Date: 22/04/16

Drawing Number:	Revision:
1537-01-202	A