

NTS



NTS

1) CURRENT CONDITION

1.1	Current Main Vessel	Size:	MV BIGGA	MV GEIRA
		<ul style="list-style-type: none"> Loa = 33 m Beam = 10.1 m Draught = 2.61 m 	<ul style="list-style-type: none"> Loa = 30m Beam = 9m Draught = 2.61m 	
		Capacity:	<ul style="list-style-type: none"> 96 passengers 14 PCU 	<ul style="list-style-type: none"> 96 passengers 10 PCU
1.2	Breakwater	Rubble mound 200m long		
1.3	RoRo Ferry Berth	<ul style="list-style-type: none"> 50m long piled jetty. Vertical rubber D type fenders 		
1.4	Linkspan	Large 9.3m wide x 20.47 m long		
1.5	Overnight lay-by berth	Approx. 60m berth length for overnight / lay-by.		
1.6	Parking/waiting area	50 lane meters approx.		
1.7	Passenger facilities	Toilets & waiting room		
1.8	Additional infrastructure	Slipway and suspended concrete pier		



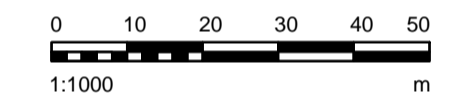
Scale approx. 1:1000

NOTES:

1. COPYRIGHT BECKETT RANKINE, EXCEPT WHERE NOTED OTHERWISE. THIS DRAWING, DESIGN AND CONCEPT IS CONFIDENTIAL AND MAY NOT BE REPRODUCED, MANUFACTURED OR EXPLOITED IN WHOLE OR PART WITHOUT WRITTEN CONSENT.
2. THIS DRAWING IS FOR THE SOLE USE OF THE NAMED CLIENT FOR THE PURPOSE SHOWN.
3. DIMENSIONS ARE NOT TO BE SCALED FROM THIS DRAWING. ALL DIMENSIONS ARE IN MILLIMETRES UNLESS OTHERWISE INDICATED.
4. OFFICIAL ISSUES OF THIS DRAWING ARE IN PAPER OR PDF FORMAT ONLY. DWG FORMAT FILES ARE FOR REFERENCE ONLY.
5. IMAGERY FROM BING MAPS AND GOOGLE EARTH.
6. BED LEVELS FROM FETLAR BREAKWATER AND SMALL CRAFT FACILITY - GENERAL ARRANGEMENT DRAWING PROVIDED BY THE CLIENT.
7. FENDERS AND BOLLARDS FOR OVERNIGHT MOORING REQUIRE FURTHER ASSESSMENT TO ESTABLISH THEIR ADEQUACY FOR LARGER VESSELS.

SHETLAND TIDAL LEVELS

LOCATION	MHWS	MHWN	MLWN	MLWS
Bluemull Sound	2.6	1.9	1.0	0.5

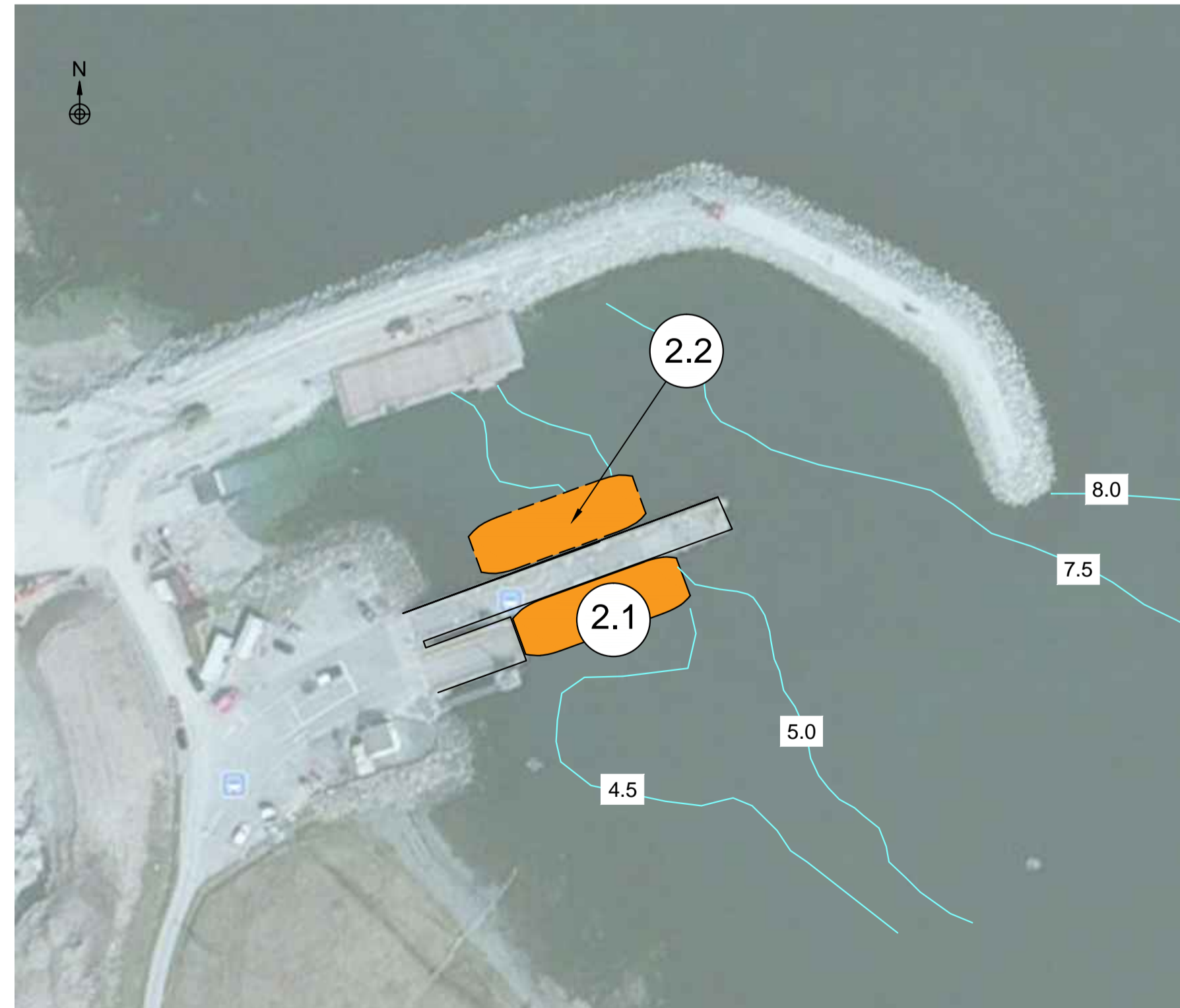


ORIGINAL DIMENSION 90mm

Reference Drawings:

2) LIKE FOR LIKE OPTION No Terminal upgrades		
2.1	Vessel	TYPE 1
2.2	Overnight lay-by berth	Safely overnight berthing

3) LARGER VESSEL Terminal upgrades		
3.1	Vessel	TYPE 2
3.2	Overnight lay-by berth	<ul style="list-style-type: none"> Review adequacy of current bollards and fenders (see note 7).
3.3	Waiting area	<ul style="list-style-type: none"> Additional waiting area may be required during busy periods.



Scale approx. 1:1000



Scale approx. 1:1000

B	18/07/16	SIC comments
A	14/06/16	PBA comments
Rev	Date	Details

Client:

Project:
SHETLAND INTER-ISLAND TRANSPORT STUDY

Title:
BLUEMULL HAMARS NESS OPTIONEERING

47 Gillingham Street
Westminster, London SW1V 1HS
www.beckettrankine.com

Status:	FOR DISCUSSION		Scale at A1 Original:	AS SHOWN
Drawn:	DP	Checked:	GR	Date:
Drawing Number:	1537-01-303			Revision:
				B