

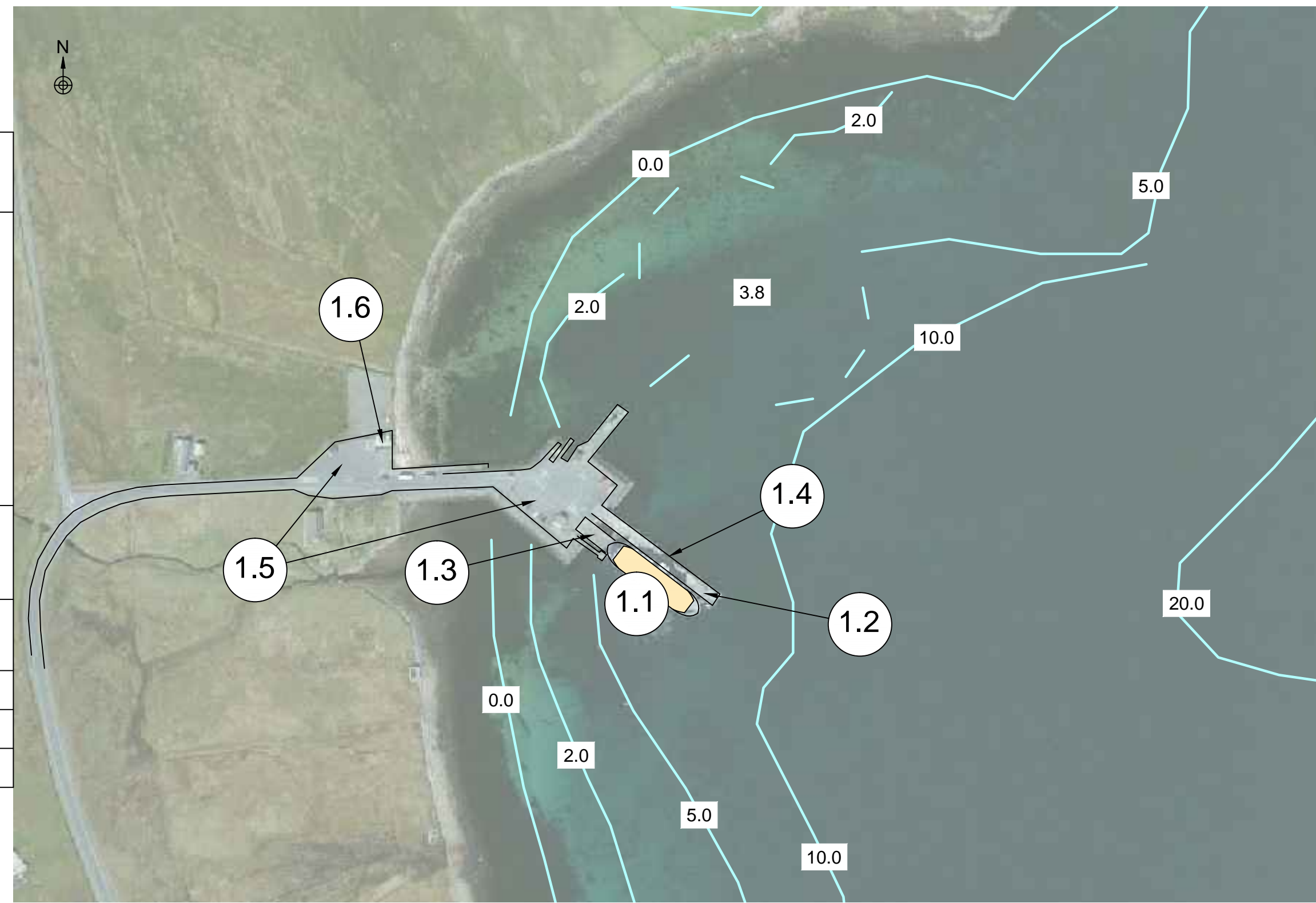
NTS



NTS

1) CURRENT CONDITION

1.1	Current Main Vessel	Size: MV DAGGRI • Loa = 65.36 m • Beam = 13.8 m • Draught = 3.70 m Capacity: • 144 passengers • 31 PCU	MV DAGALIEN • Loa = 65.36m • Beam = 13.8m • Draught = 3.70 m • 144 passengers • 31 PCU
1.2	RoRo Ferry Berth	• Piled jetty of 83 m long. The berth extends 63 m from the end of the larger sized linkspan. • Jetty provided with supercone fenders	
1.3	Linkspan	Large 9.3 m wide x 20.47 m long	
1.4	Lay-by berth	Approx. 80m	
1.5	Parking/waiting area	Limited area available	
1.6	Facilities	Toilets & waiting room	

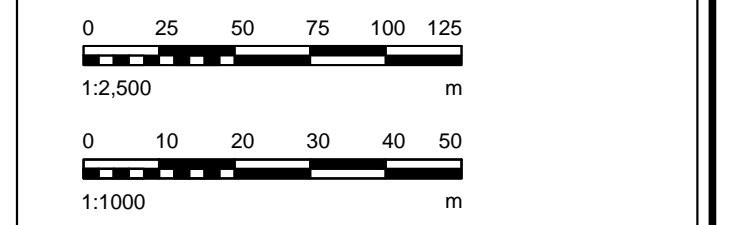


Scale approx. 1:2500

- NOTES:**
1. COPYRIGHT BECKETT RANKINE, EXCEPT WHERE NOTED OTHERWISE. THIS DRAWING, DESIGN AND CONCEPT IS CONFIDENTIAL AND MAY NOT BE REPRODUCED, MANUFACTURED OR EXPLOITED IN WHOLE OR PART WITHOUT WRITTEN CONSENT.
 2. THIS DRAWING IS FOR THE SOLE USE OF THE NAMED CLIENT FOR THE PURPOSE SHOWN.
 3. DIMENSIONS ARE NOT TO BE SCALED FROM THIS DRAWING. ALL DIMENSIONS ARE IN MILLIMETRES UNLESS OTHERWISE INDICATED.
 4. OFFICIAL ISSUES OF THIS DRAWING ARE IN PAPER OR PDF FORMAT ONLY. DWG FORMAT FILES ARE FOR REFERENCE ONLY.
 5. IMAGERY FROM GOOGLE EARTH.
 6. BED LEVELS FROM ADMIRALTY CHART 3298 YELL SOUND.
 7. BERTH STRUCTURE REQUIRES FURTHER ASSESSMENT TO ESTABLISH NECESSARY REPAIRS/STRENGTHEN WORKS OR COMPLETE REPLACEMENT TO COMPLY WITH A 30 YEARS SERVICE LIFE.
 8. FENDERS AND BOLLARDS FOR OVERNIGHT MOORING REQUIRE FURTHER ASSESSMENT TO ESTABLISH THEIR ADEQUACY FOR LARGER VESSELS.

SHETLAND TIDAL LEVELS

LOCATION	MHWS	MHWN	MLWN	MLWS
Burra Voe	2.3	1.8	0.9	0.4



2) LIKE FOR LIKE OPTION

Terminal upgrades

2.1	Vessel	TYPE 3
2.2	Parking/waiting area	Additional parking area for busy periods.

See note 7.



Scale approx. 1:1000

3) LARGER VESSEL

Terminal upgrades

3.1	Vessel	TYPE 4
3.2	RoRo Ferry Berth	Vessel slightly overhangs but is not considered an issue (see notes 7 & 8).
3.3	Parking/waiting area	Additional parking area for busy periods.

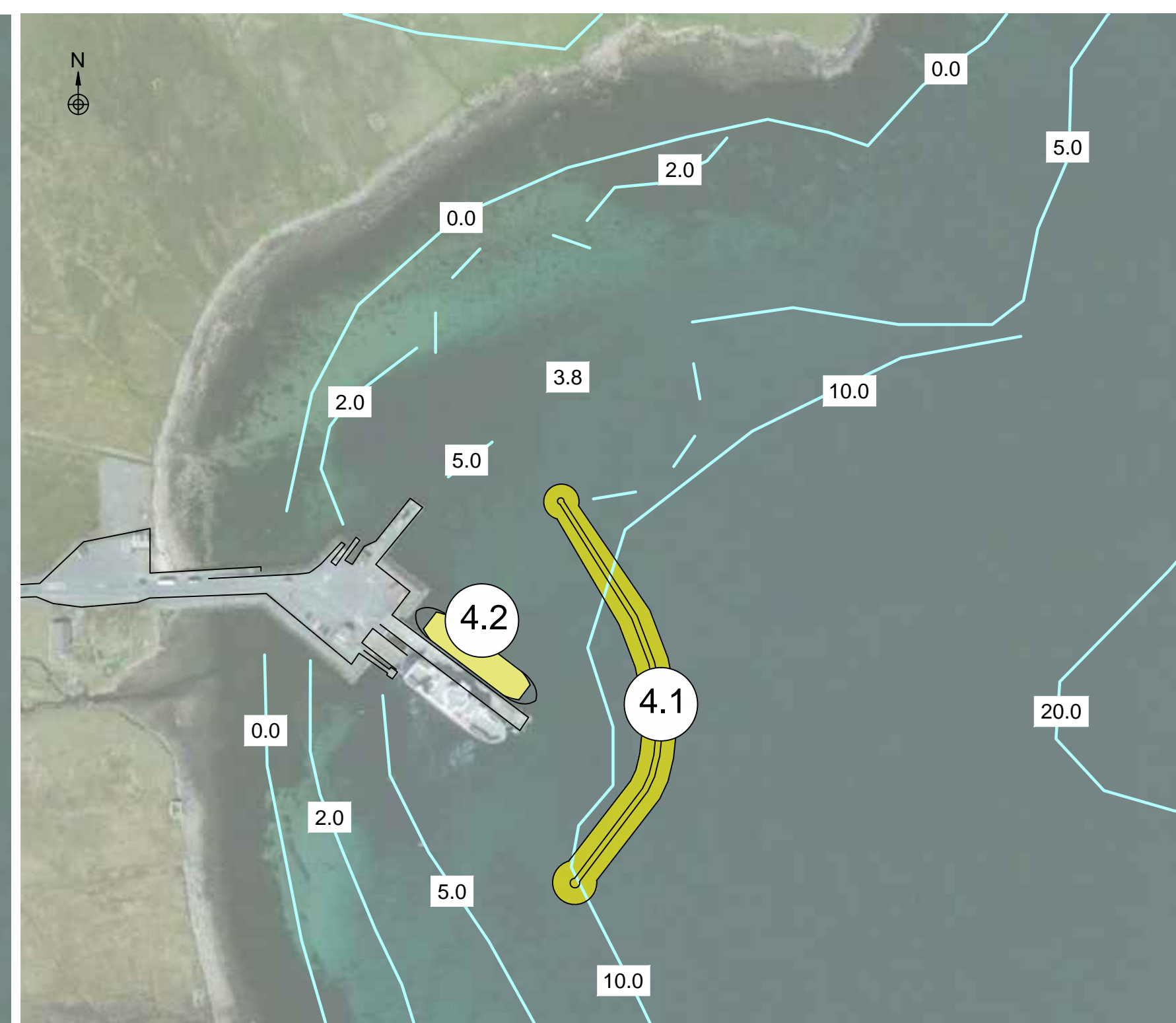


Scale approx. 1:1000

4) BREAKWATER AT TOFT

Indicative layout

4.1	Detached breakwater	• Approx. 210m long detached breakwater to provide shelter for northerly and easterly waves allowing vessels to safely overnight. • Allows vessels to access from north and south sides. • Breakwater could be extended to land (north side) to increase sheltered area but providing access only from south side.
4.2	Overnight position	• Possible overnight berth to avoid larger vessel overhanging. • Access to the berth from north side entrance.



Scale approx. 1:2500



Reference Drawings:

A	15/06/16	PBA comments
Rev	Date	Details
Client:		



Project:
SHETLAND INTER-ISLAND TRANSPORT STUDY

Title:
YELL - TOFT OPTIONEERING



47 Gillingham Street
Westminster, London SW1V 1HS
www.beckettrankine.com

Status:	FOR DISCUSSION	Scale at A1 Original:	AS SHOWN
Drawn:	DP	Checked:	GR
Date:	24/03/16		
Drawing Number:	1537-01-801	Revision:	A

T:\2015\1537 - Shetland Inter-Island Transport Study - Beckett Rankine\01 - Shetland Inter-Island Transport Study\01 Drawings\01 Working Drawings\1537-01-801 REV A