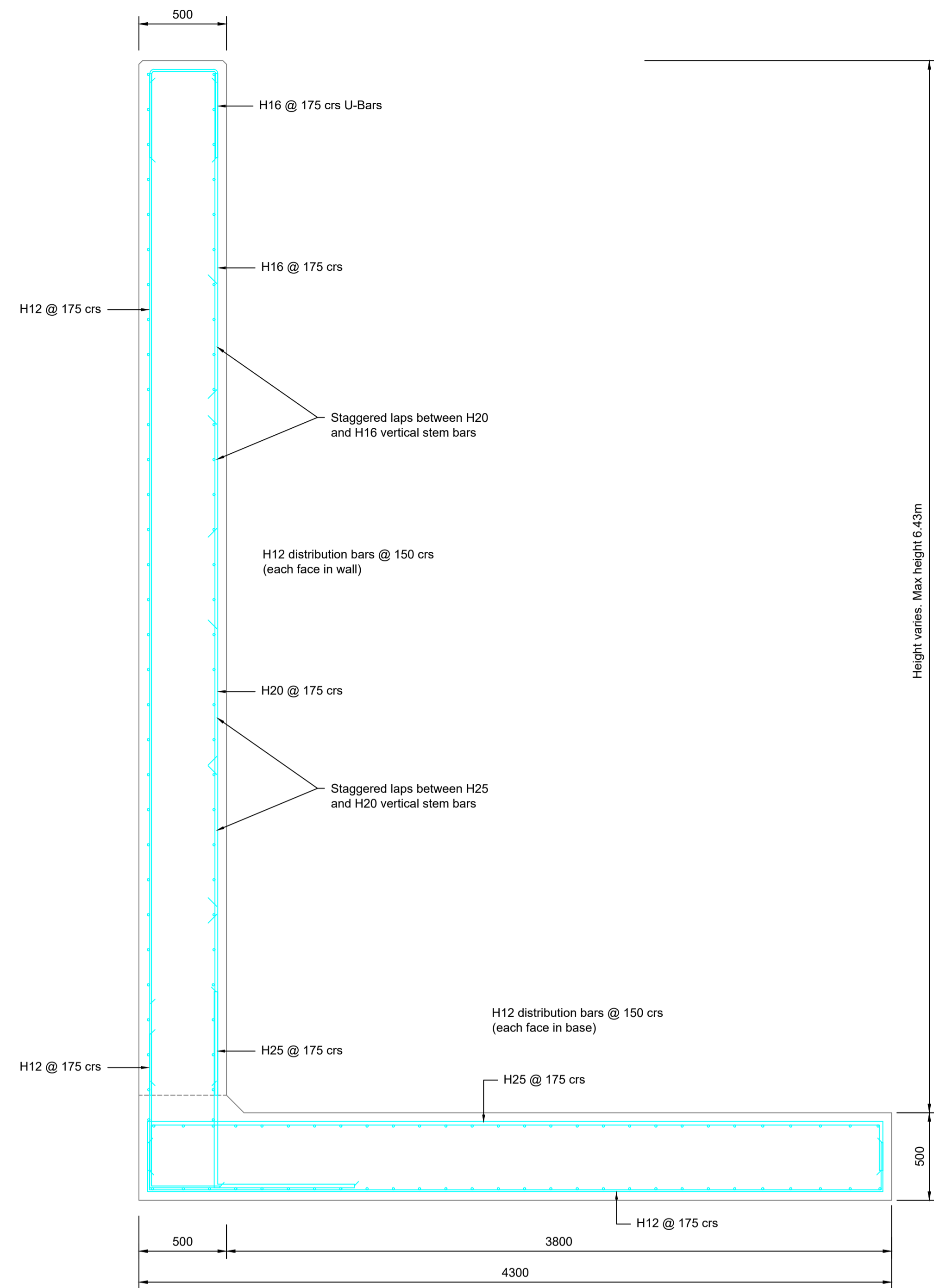


RETAINING WALL TYPE F  
SCALE 1:20



RETAINING WALL TYPE F  
REINFORCEMENT DETAILS  
SCALE 1:20

- Notes
- All dimensions are in millimetres unless noted otherwise.
  - All levels are in metres above ordnance datum.
  - The contractor shall check and verify all dimensions, notes and conditions on site prior to commencement of construction.
  - Plans and details should not be scaled, use only the dimensions given on the drawing.
  - Concrete for retaining walls shall be designated mix C32/40 to BS EN 2006-1:2000 and BS 8500: Part 2:2002.
  - Minimum cover to outermost reinforcement shall be 50mm.
  - Reinforcement designations are as BS 8666:2000, all reinforcement is grade (H).
  - Concrete to be sampled and six cubes to be made from each sample (20m<sup>3</sup> or one days concreting whichever is less), two cubes to be tested at 7 days and four cubes at 28 days in accordance with BS1881. Results to be reported immediately to the Engineer.
  - Subgrade surface to be inspected and approved by the Engineer prior to placing blinding concrete.
  - Design of walls assumes a surcharge of 15 kN/m<sup>2</sup> from construction vehicles and plant in the temporary condition and from vehicular traffic in the permanent condition.
  - Design assumes no allowance for water pressure behind walls with drainage systems provided to rear of walls to prevent water build up.
  - Design assumes fence or guardrail fixed to the top of each wall type with height of 1100mm above ground level.
  - Reinforcement lap lengths to be 51 x bar diameter in wall stem, 39 x bar diameter in bottom of base and 56 x bar diameter in top of base unless noted otherwise.

Key to symbols

FGL - Finished Ground Level

Reference drawings

- MMD-409577-C-DR-00-XX-1350 - Retaining Wall Layout
- MMD-409577-C-DR-00-XX-1351 - Retaining Wall Details (Sheet 1 of 4)
- MMD-409577-C-DR-00-XX-1352 - Retaining Wall Details (Sheet 2 of 4)
- MMD-409577-C-DR-00-XX-1353 - Retaining Wall Details (Sheet 3 of 4)

P1	01:21	EW	Preliminary Issue	NP	KB
Rev	Date	Drawn	Description	Ch'kd	App'd

**MOTT MACDONALD**

Greenhead  
Lerwick  
Shetland  
ZE1 0PY  
United Kingdom  
T +44 (0)1595 695049  
F +44 (0)1595 693404  
W mottmac.com

Client  
**Hjaltland Housing Association**  
2 Harbour Street  
Lerwick  
Shetland  
ZE1 0LR

Title  
**Proposed Housing at Stoneyhill, Lerwick**  
Work Stream 1 - Civils Infrastructure

**Retaining Wall Details**  
Sheet 4 of 4

Designed	L Krauze	LK	Eng check	N Pearson	NP
Drawn	E Wishart	EJW	Coordination	J Moncrieff	JM
Dwg check	J Moncrieff	JM	Approved	K Burnett	KB
Scale at A1	Status	Rev	Security		
1:20	PRE	P1	STD		

Drawing Number  
**MMD-409577-C-DR-00-XX-1354**

