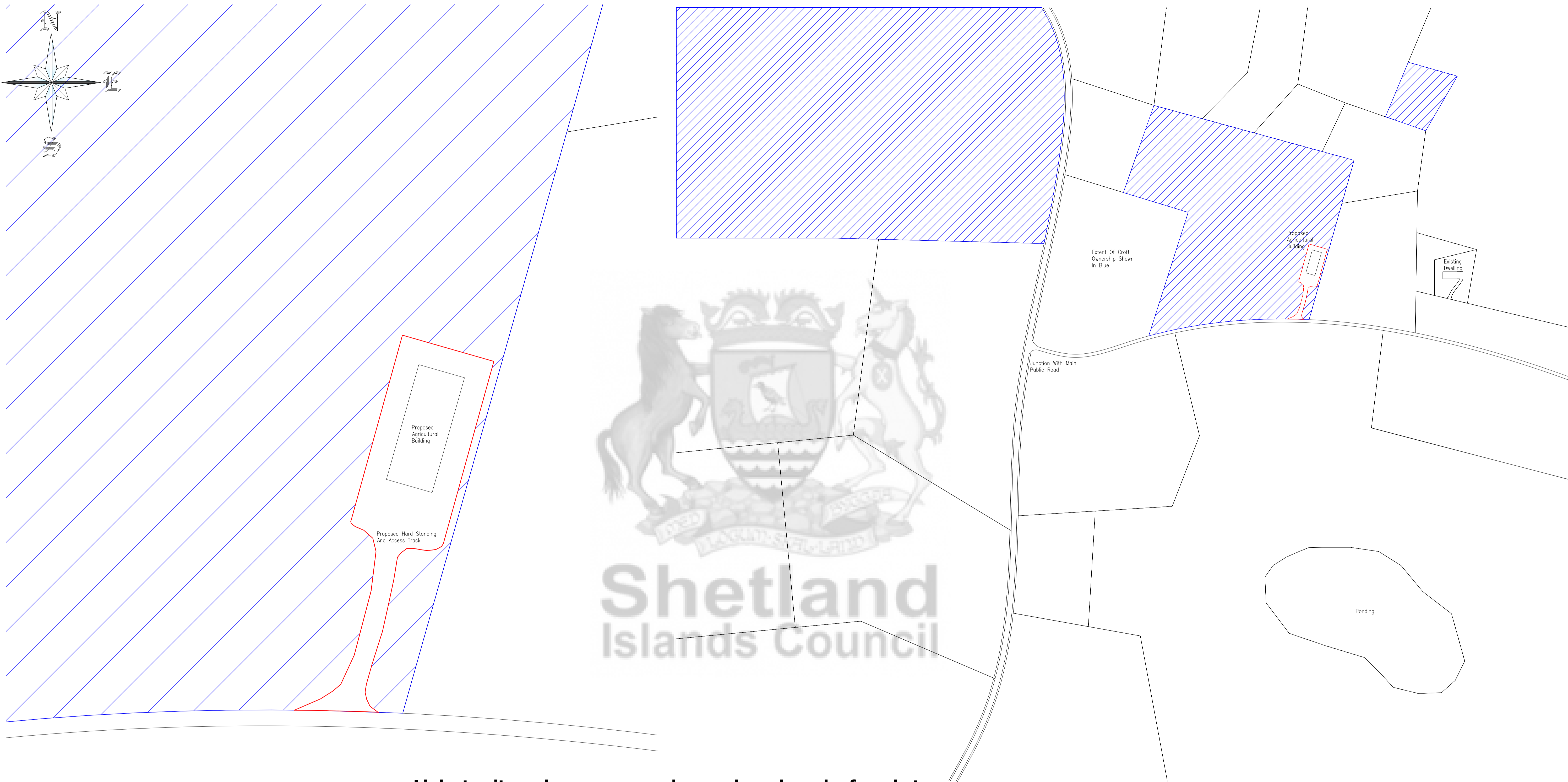
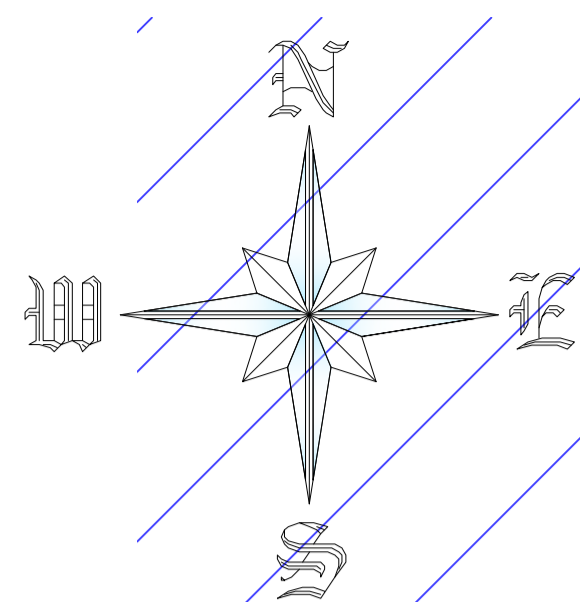
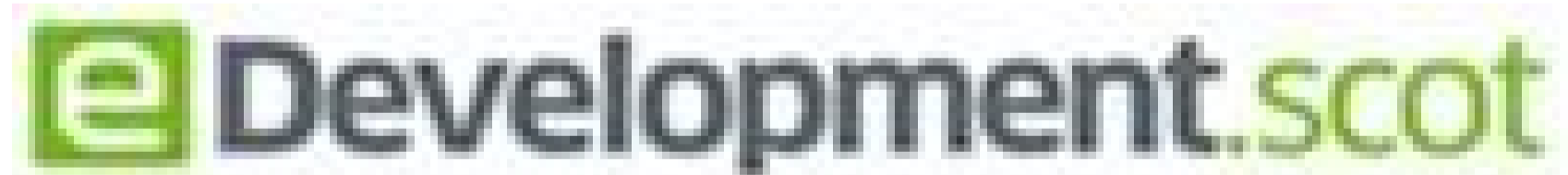


# Prior Notification Location Plan and Site Plan Guidance



Links to sites where maps can be purchased can be found at

Site Plan  
1:500



Location Plan  
1:2500

## Site Plan Requirements

- North Point
- Produced to a scale of 1:100, 1:200 or 1:500
- Red Line Development Boundary - must be a continuous solid red line and match on both Location and Site Plan
- *\*Please note - If you are creating new access or hardstanding this must also be included within your red line development boundary*
- Blue line for any other land in control or owned

## Location Plan Requirements

- Must show full extent of croft outlined in a solid blue line
- North Point
- At a scale that can identify site in relation to surroundings
- Red Line Development Boundary - must be a continuous solid red line and match on both Location and Site Plan
- Property and road names and numbers

### Prior Notification Elevation Drawing Guidance

#### Requirements

Scale 1:50 and 1:100

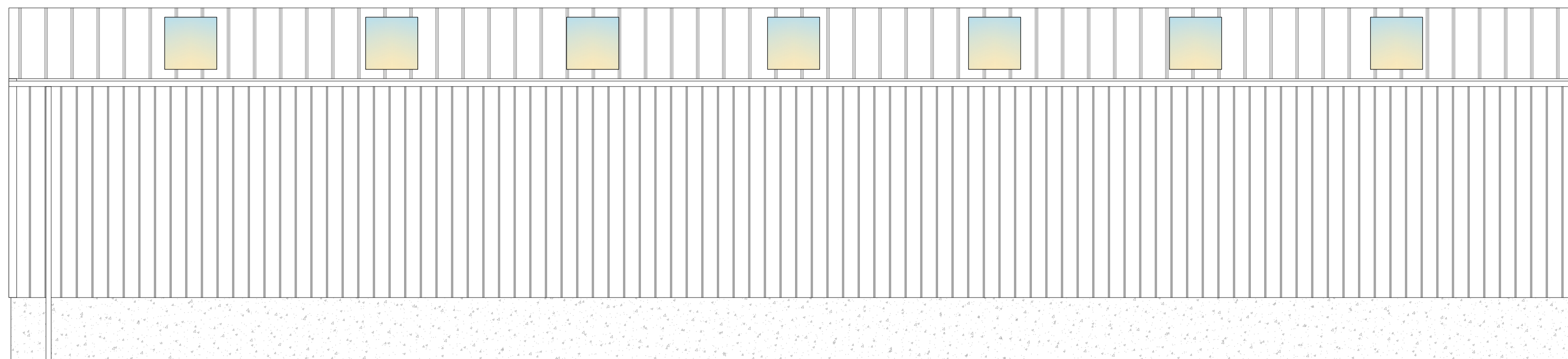
#### Dimensions

All Elevations to be shown

Labelled North/South/East/  
West

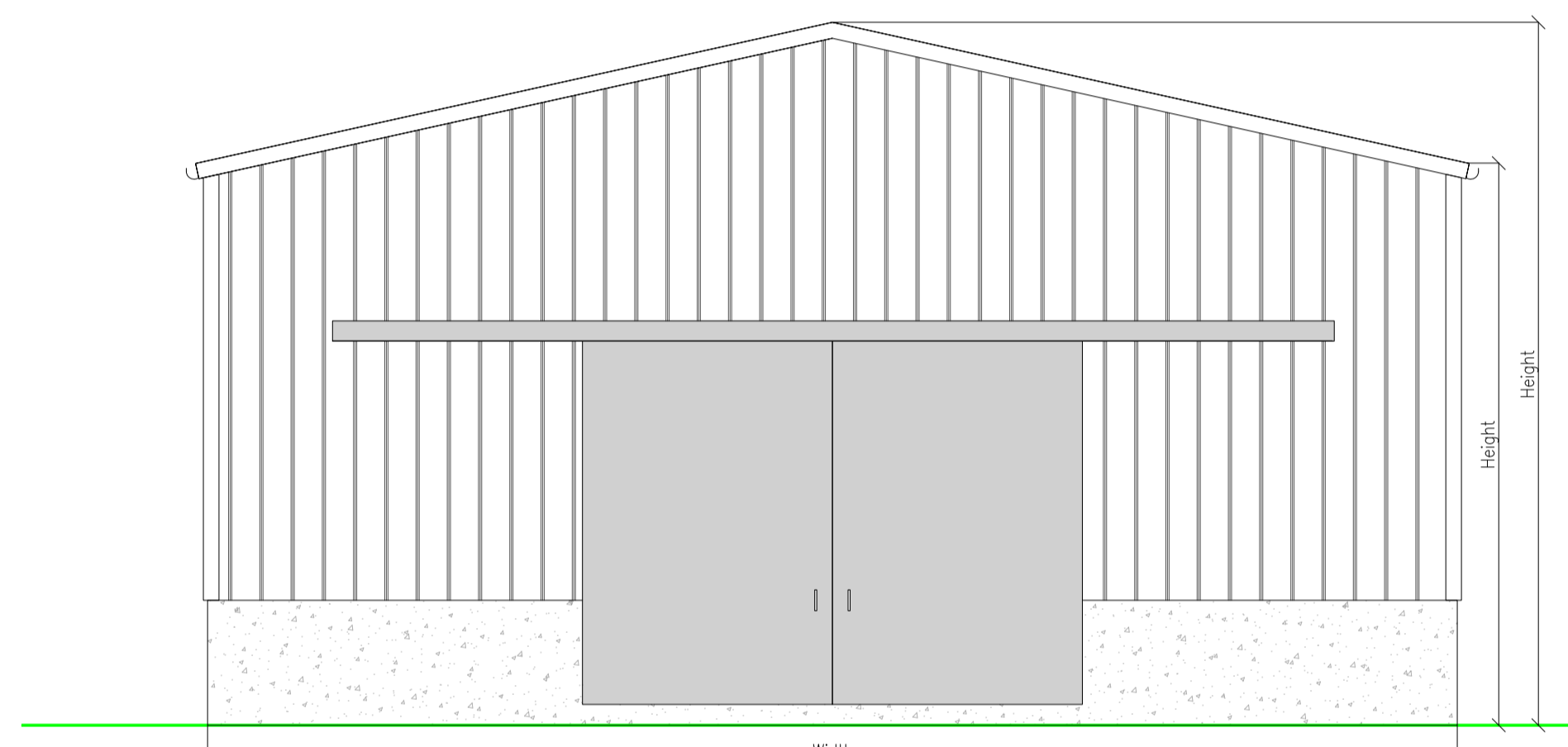
External Finishes and Colours

FLOOR PLAN WITH North  
Point must also be  
included



Details must be marked  
detailing Materials and colours

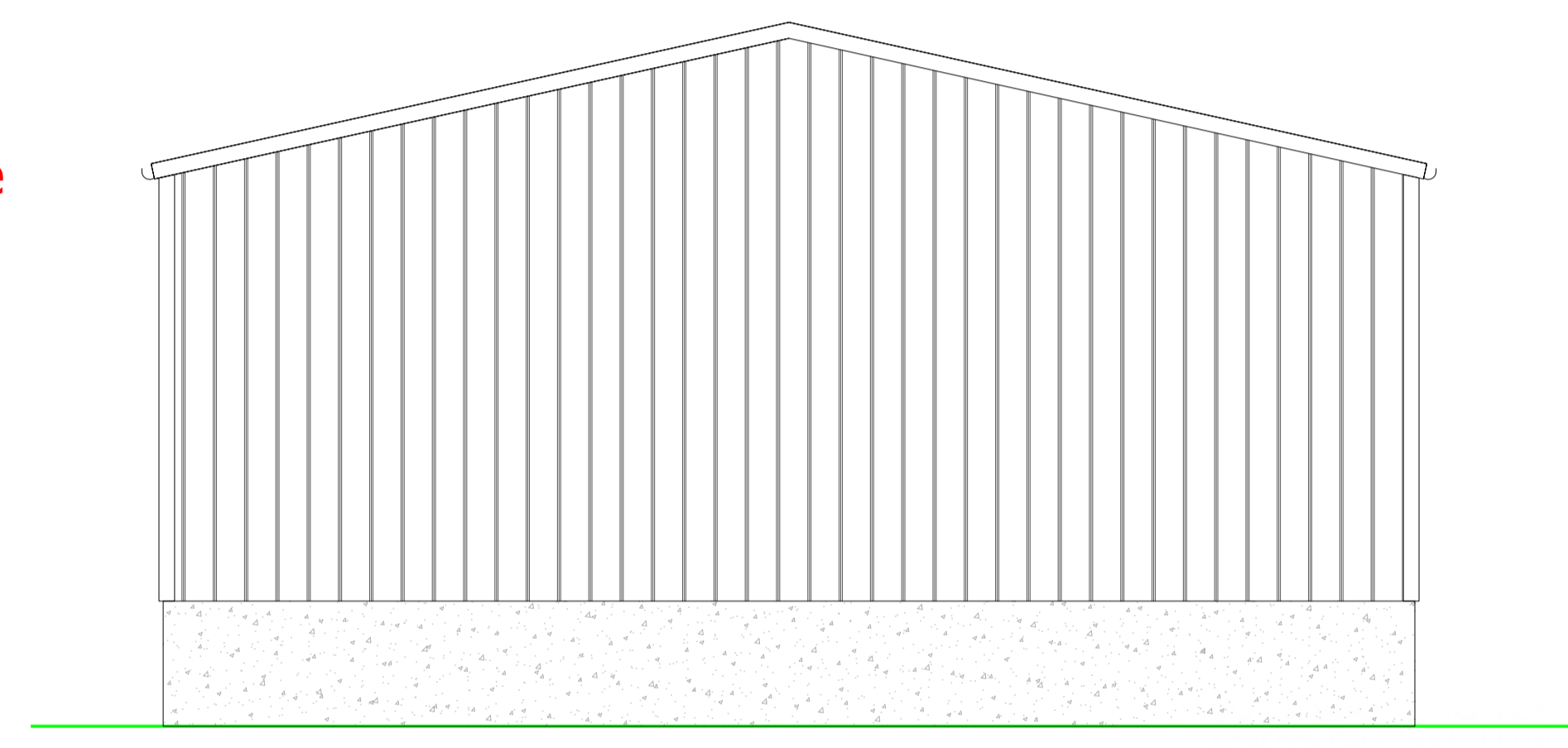
East Elevation  
1:50



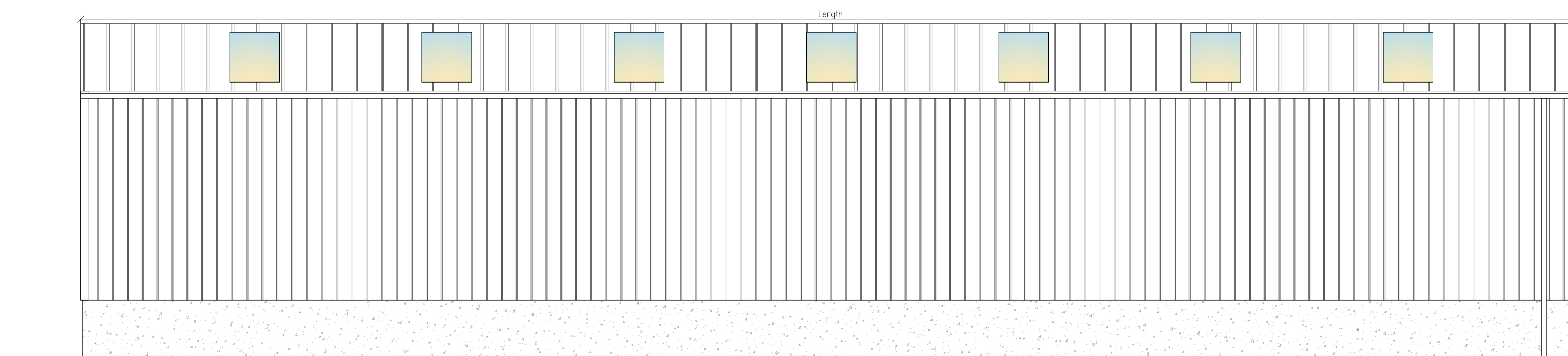
Dimensions must be  
Clearly Written

Dimensions for All  
Heights and  
Widths

South Elevation  
1:50



North Elevation  
1:50



West Elevation  
1:50

