

# **SHETLAND ISLANDS COUNCIL**

## **Ports & Harbours Operations**

### **Yell Sound – Scientific works**

#### **Notice to Mariners No 05/2022**

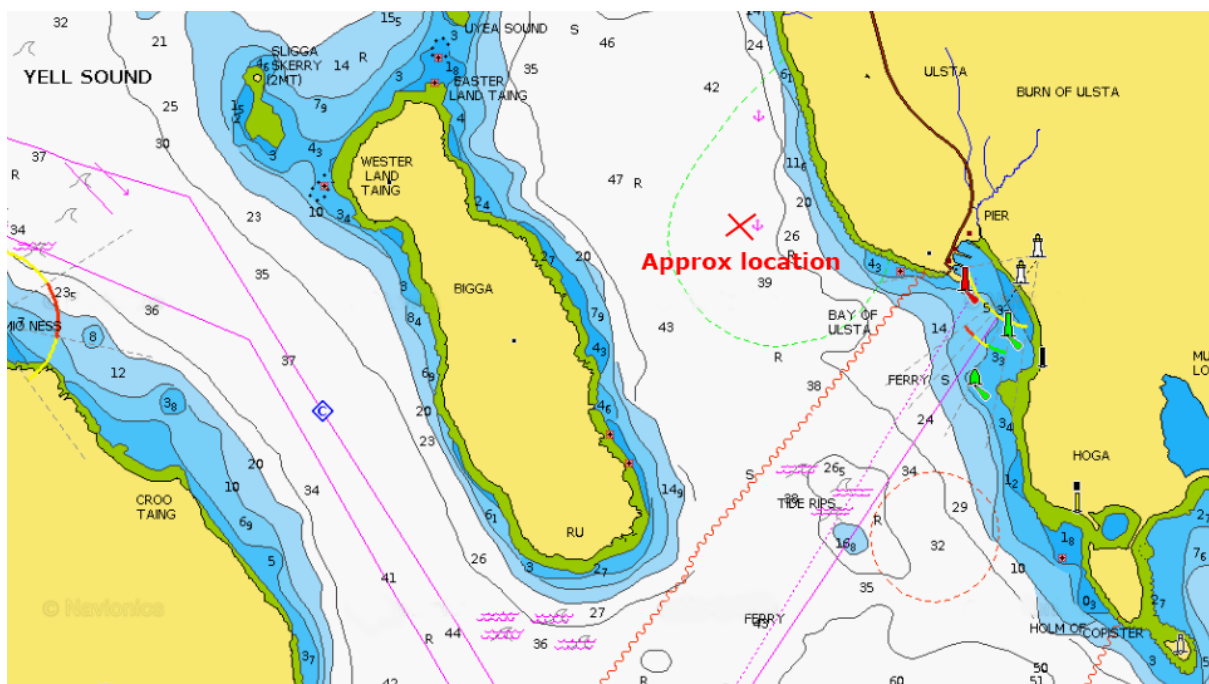
Mariners are advised that at the start of February 2022, works will be conducted in Yell sound to deploy tidal measuring equipment onto the seabed.

The equipment will be deployed between the isle of Bigga and the adjacent coast of Yell, in position;

Lat:60°29.906'N, Long: 001°10.386'W

The equipment will remain in place, on the seabed until approx. mid-March after which, it will be removed.

The equipment when on the seabed, does not pose a risk to surface navigation.



Ports and Harbours Operations  
Shetland Islands Council  
Sella Ness, Sullom Voe  
Shetland  
ZE2 9QR

For a full list of current Notice to Mariner's, please check our website:

<http://www.shetland.gov.uk/ports/notices.asp>

Date of issue – 20/01/2022