

# **SHETLAND ISLANDS COUNCIL**

## **Ports & Harbours Operations**

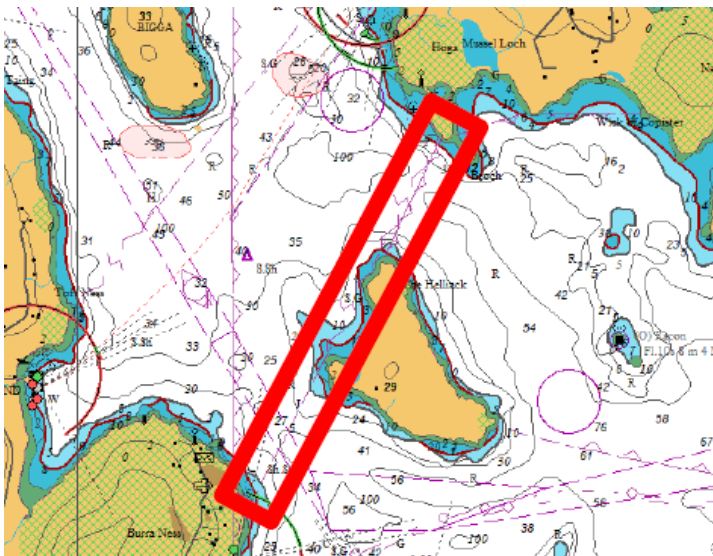
### **Subsea Cable Inspection – Various locations**

#### **Notice to Mariners No 17/2022**

Mariners are advised that Subsea cable inspection operations are to be carried out in the following Shetland Island council Harbour areas & their approaches,

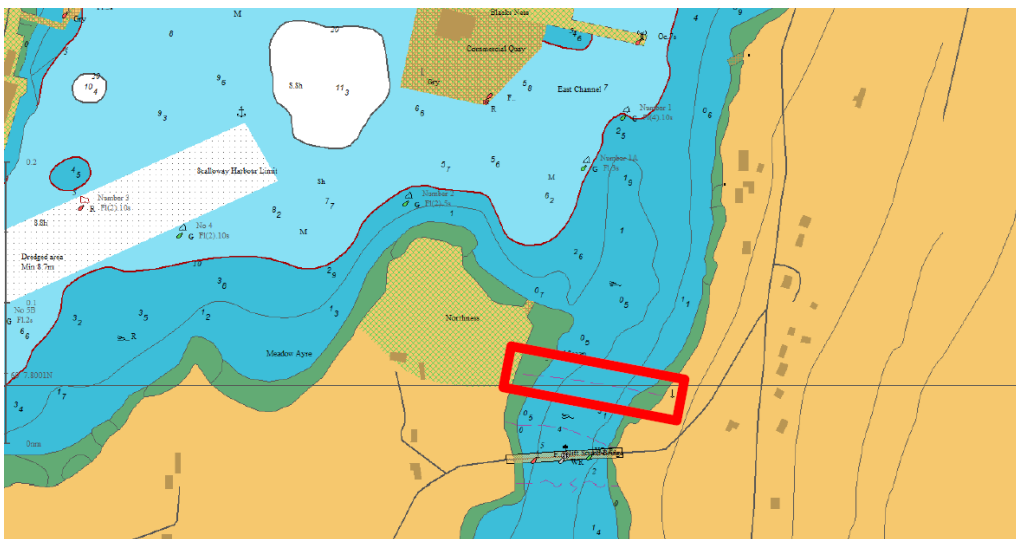
#### **Sullom Voe – Yell Sound**

Works will be conducted in the Sullom Voe Harbour Area between 24/07/2022 – 17/08/2022. Area of works shown below.



#### **Scalloway Harbour – Clift Sound**

Works will be conducted in the Scalloway Harbour Area between 20.06.2022 - 24.06.2022. Area of works shown below.



## **Clearance Required**

Operations will be limited to daylight hours only.

The vessels conducting these inspections will be restricted in their ability to manoeuvre and will display the appropriate lights and shapes. Other vessels are requested to pass at a safe speed and distance.

For full details including vessels to be utilised, please see Scottish & Southern Energy Electric Networks Notice to Mariners “Marine & Freshwater Subsea Inspections – 2022” which is available on our website

A full list of current Local Notices to Mariners will be maintained at:

[Local Notice to Mariners – Shetland Islands Council](#)

<https://www.shetland.gov.uk/downloads/download/91/local-notice-to-mariners>

Or by contacting

Reception,  
Ports & Harbours Operations,  
Port Administration Building,  
Sella Ness, Shetland ZE2 9QR.  
Tel. 01806 244200

Ports and Harbours Operations  
Shetland Islands Council

Date of Issue 17/06/2022