

# Indicative Regional Spatial Strategy

## 2021



**SHETLAND**  
ISLANDS COUNCIL

## CONTENTS:

• INTRODUCTION	Page 3
• VISION AND SPATIAL STRATEGY	Page 5
○ MAP	Page 6
• THEMES	Page 7-10
○ CLIMATE CHANGE: Energy and Environment	Page 7
○ PEOPLE: Community, Health and Wellbeing	Page 8
○ WORK: Employment, Business and Industry	Page 8
○ PLACE: Biodiversity, Landscape and Built Environment	Page 9
○ CONNECTIVITY: Transport and Infrastructure	Page 9-10
• NEXT STEPS	Page 11
• APPENDIX 1	Page 12

# INTRODUCTION

## What is a Regional Spatial Strategy?

The Planning (Scotland) Act 2019 established a new duty for a planning authority, or authorities acting jointly, to prepare and adopt a Regional Spatial Strategy. Regional Spatial Strategies (RSS) are long-term spatial strategies which are to identify:

- The need for strategic development
- The outcomes to which strategic development will contribute
- Priorities for the delivery of strategic development
- Proposed locations, shown in the form of a map or diagram.

## Why has it been prepared?

The Scottish Government has requested that indicative draft RSS's be prepared to help guide and inform strategic content in the new National Planning Framework 4 (NPF4) that is currently being prepared. All Scottish planning authorities are currently considering what their strategic challenges and opportunities are at regional level up to 2050, as part of this process. Regulations and guidance are still to be published on how to prepare these strategies, however:

- **This document is the Indicative Regional Spatial Strategy (iRSS) for Shetland.**
- **It sets out our early thinking on the strategic issues and opportunities in Shetland.**

## What does our Regional Spatial Strategy cover?

Our IRSS contributes to a collection of responses prepared by the Council as part of the Scottish Government's ongoing NPF4 review:

These documents include:

- The NPF4 Call for Ideas Response
- Candidate National Development Ideas
- NPF4 Policy Topic Response and the
- Housing Technical Discussion Paper Response.

The background to the IRSS, and the Council's other NPF4 responses, includes the declaration of a Climate and Ecological Emergency and the United Kingdom's decision to withdraw from the European Union (Brexit). Importantly, our submissions have also been prepared during the COVID19 pandemic, which has resulted in a change of focus, with greater emphasis being placed on the delivery of the Recovery and Renewal Framework

Investment in our communities and the creation of sustainable resilient places are critical to Shetland's recovery and future sustainability. The IRSS has also been developed to align with the Council's Corporate Plan 'Our Ambition', The Islands Deal (Heads of Terms ) and the evidence gathering which is part of the preparation of the Shetland Local Development Plan (LDP2) Process.

Prepared at the request of the Scottish Government to help inform the drafting of National Planning Framework 4, it should be noted that this draft strategy has not yet been consulted on. Information included in this IRSS will input into NPF4 which will be required to go through a period of consultation prior to adoption.

Full stakeholder engagement and consultation on RSS for Shetland will form a key part of the process to prepare the formal Regional Spatial Strategy in due course.

# VISION AND SPATIAL STRATEGY

## VISION

By 2050 Shetland will have strong, sustainable and resilient communities with a balanced, healthy, well cared for and self-sustaining population. We will benefit from:

- An economically diverse and robust business and industry sector;

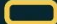
- A natural environment, both land and sea, that is protected, promoted, appreciated and is easily accessible; and

- Settlements that are physically and digitally well connected.


- informed by Draft Local Development Plan approved vision 2017 and the Shetland Islands Regional Marine Plan approved vision 2021

# Map

## Indicative Regional Spatial Strategy for Shetland


 Main settlements:

**Main transport links:**


 Internal transport link points


 Strategic Internal Airport (Inter Island)


 Strategic Airport (Scotland & Scandinavia)

 Strategic Port (Travel & Freight)


 HVDC cable route


 Shell-volution


 Shetland Green Energy Project

 **Climate Change:**  
Islands centre for net zero  
Shetland Green Energy Project

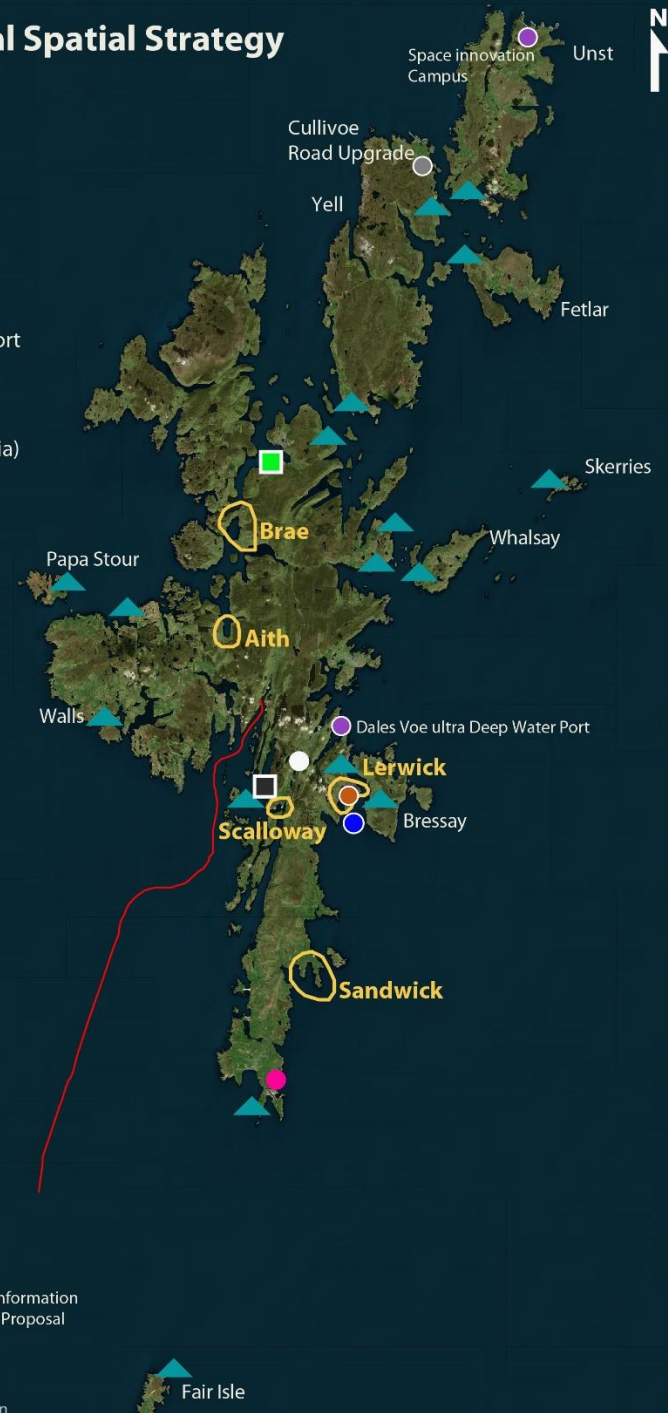
 **People:**  
Knab Campus Re-Development

 **Work:**  
The Shetland Campus  
Shell- volution  
Dales Voe ultra Deep Water Port  
Space innovation Campus

 **Place:**

 **Connectivity:**  
Cullivoe Road Upgrade  
North Isles Fibre project

Please see Appendix 1 for further information on the five Strategic Development Proposal themes listed above.



# THEMES

The Themes listed in the tables below are all inter-related and the strategies and projects mentioned within them are often interlinked. For simplicity the projects have been listed once in the table under the theme where their contribution is expected to have the most direct and significant impact. More information on the Strategic Development Projects is set out in appendix 1 of this document and where they have a specific geographical location they have been shown on the Spatial Strategy Map.

CLIMATE CHANGE: ENERGY AND ENVIRONMENT		
Main Concerns	Strategic response	Strategic Development Proposals
<ul style="list-style-type: none"> <li>• The Scottish Government has set a target to achieve net zero emissions by 2045.</li> <li>• Carbon emissions in Shetland are 73% higher than the Scottish average*</li> <li>• Future impacts of climate change contribute to sea level rise, and increased flood risk.</li> <li>• Peatlands contribute to biodiversity and carbon capture. The interrelationship between climate change, biodiversity, land use and natural capital needs to be recognised.</li> <li>• Marine habitats which act as carbon sinks need to be protected and enhanced</li> </ul>	<ul style="list-style-type: none"> <li>• Shetland Local Flood Risk Management Plan.</li> <li>• Forestry and Woodland Strategy</li> <li>• Shetland Climate Change Strategic Outline Programme</li> </ul>	<ul style="list-style-type: none"> <li>• Islands centre for net zero</li> <li>• Shetland Green Energy Project</li> <li>• Sectoral Marine Plan for Offshore Wind (2020) - Site NE1.</li> <li>• Shetland Net zero route map</li> </ul>

PEOPLE: Community, Health and wellbeing		
Main Concerns	Strategic Response	Strategic Development Proposals
<ul style="list-style-type: none"> <li>• 53% of Households spend over 10% of their household income on fuel bills*</li> <li>• Poverty rates in Scotland are improving while in Shetland they remain static or are worsening*</li> <li>• Shetlands population is ageing at a faster rate than the rest of Scotland*</li> <li>• Outward migration</li> <li>• Health of population</li> </ul>	<ul style="list-style-type: none"> <li>• Fair Food Strategy</li> <li>• Creative Islands Wellbeing project</li> <li>• Local Place Plans</li> <li>• Locality Plan – Islands with small populations</li> <li>• Shetland’s Partnership Plan</li> </ul>	<ul style="list-style-type: none"> <li>• Knab Campus Re-Development</li> </ul>

WORK: Economy, Employment, Business and Industry		
Main Concerns	Strategic Response	Strategic Development Proposals
<ul style="list-style-type: none"> <li>• 19% of our population is ages 65 or over, 4% more than a decade ago*</li> <li>• 20% of Local Businesses struggle to fill vacancies due to lack of local labour*</li> <li>• Recruitment and retention issues exist across many industry sectors.</li> </ul>	<ul style="list-style-type: none"> <li>• Economic Development Strategy</li> </ul>	<ul style="list-style-type: none"> <li>• The Shetland Campus/Shetland College UHI</li> <li>• Shell-volution</li> <li>• Dales Voe ultra Deep Water Port</li> <li>• Space innovation Campus</li> <li>• Sullom Voe Harbour Masterplan</li> <li>• Cullivoe Industrial Estate and Marina project</li> </ul>

PLACE: Biodiversity, Landscape and Built Environment		
Main Concerns	Strategic Response	Strategic Development Proposals
<ul style="list-style-type: none"> <li>• High quality natural and historic environment and landscape recognised in the range and number of designations.</li> <li>• Natural Environment and Archaeology and historic built environment are valuable assets to Shetland's tourist industry.</li> <li>• 59% of people rate the quality of natural spaces in Shetland highly. Key areas identified for improvement include paths and access infrastructure and the need to protect our environment and natural resources.*</li> </ul>	<ul style="list-style-type: none"> <li>• Local Development Plan 2</li> <li>• Shetland Outdoor Access Strategy</li> <li>• Shetland Islands Regional Marine Plan</li> <li>• Tourism Strategy</li> </ul>	Sustain the UNESCO Geopark

CONNECTIVITY: Transport and Infrastructure		
Main Concerns	Strategic Response	Strategic Development Proposals
<ul style="list-style-type: none"> <li>• Poor digital connectivity impacts on the economy including business</li> </ul>	<ul style="list-style-type: none"> <li>• Active Travel Strategy</li> <li>• Regional Transport Strategy</li> <li>• Islands Connectivity Plan</li> </ul>	<ul style="list-style-type: none"> <li>• Cullivoe Road Upgrade</li> <li>• North Isles Fibre project</li> </ul>

<p>relocation and homeworking opportunities</p> <ul style="list-style-type: none"> <li>• Transport connectivity. Challenging to provide a sustainable service to remote and islands communities</li> <li>• Upgrades to infrastructure are required to support the creation/ maintenance of a strong and sustainable rural economy</li> <li>• Identified need to explore the potential for demand responsive transport, shared transport options on Mobility as a Service</li> </ul>		<ul style="list-style-type: none"> <li>• Electricity Network Enhancements – HVDC Interconnector,</li> </ul>
---	--	---

- \*Source: Shetland Partnership Plan

## NEXT STEPS

- Submit iRSS to Scottish Government as input to draft NPF4 and assess any feedback from Scottish Government
- Share iRSS with partners and neighbouring planning authorities to further discuss and explore linkages, opportunities and means for delivery.
- Await adoption of NPF4 and further guidance on production of RSS
- Identify a broad timetable and work programme for the RSS

## APPENDIX 1

LIST OF PROJECTS and STRATEGIES: ( get detail of each project from Islands Deal SOC)

CLIMATE CHANGE : Energy and Environment

- Shetland Local Flood Risk Management Plan.
- <https://www.shetland.gov.uk/downloads/file/1906/local-flood-risk-management-plan> Forest and Woodland Strategy
- Shetland Climate Change – Strategic Outline Programme
  
- Island Center for Net Zero:
- Shetland Green Energy Project:
- Sectoral Marine Plan for Offshore Wind (2020) Site NE1
  - <https://www.gov.scot/publications/sectoral-marine-plan-offshore-wind-energy/pages/3/>
- Shetland Net zero route map

## PEOPLE: Community Health and Wellbeing

- Fair Food Strategy
  - <https://www.shetland.gov.uk/downloads/file/2447/fair-food-policy-strategy>
- Creative Islands Wellbeing project
- Local Place Plans
- Locality Plan – Islands with small populations
  - <https://www.shetland.gov.uk/downloads/file/2446/islands-with-small-populations-locality-plan>
- Shetland's Partnership plan
  - <https://www.shetland.gov.uk/downloads/file/1085/shetland-partnership-planPlan>
- Knab Campus Re-Development
  - <https://www.shetland.gov.uk/downloads/file/2016/knab-masterplan-report>

## WORK: Economy, Business and Industry

- Economic Development Strategy
- The Shetland Campus/Shetland College UHI
- Shell-volution
- Dales Voe ultra Deep Water Port
- Space innovation Campus
- Sullom Voe Harbour Masterplan
- Cullivoe Industrial Estate and Marina Project

PLACE: Biodiversity, Landscape and Built Environment

- Local Development Plan 2
- Shetland Outdoor Access Strategy
- Shetland Islands Regional Marine Plan
- Shetland Tourism Strategy
  - <https://www.shetland.gov.uk/directory-record/3813/tourism-strategy>

CONNECTIVITY: Transport and Infrastructure

- Active Travel Strategy
- Shetland Transport Strategy
  - <https://www.zettrans.org.uk/about/strategy>
- Islands Connectivity Plan
- Cullivoe Road Upgrade
- North Isles Fibre project
- Electricity Network Enhancements – HVDC Interconnector,



**SHETLAND**  
ISLANDS COUNCIL