



**SHETLAND**  
ISLANDS COUNCIL



*Photo: Ian Best*

# LEISURE CRAFT GUIDE TO COUNCIL PORTS



**SHETLAND**  
ISLANDS COUNCIL

## Contents

Part 1 – Introduction.....	3
Welcome .....	3
Part 2 – Ports & Facilities .....	5
Hamnavoe .....	6
Blacksness (Scalloway) .....	7
Vaila Sound (Walls) .....	8
West Burrafirth .....	9
Collafirth.....	10
Toft.....	11
Mid Yell .....	12
Cullivoe.....	13
Uyeasound .....	14
Baltasound .....	15
Hamarsness (Fetlar) .....	16
Symbister .....	17
North Haven (Fair Isle) .....	18
Out Skerries.....	19
Part 3 – Safety & Regulations .....	20
Equipment, Stores & Planning .....	21
Navigation .....	22
Reporting .....	23
Mooring.....	24
Water Sports .....	25
Swimming, Snorkelling and paddle boarding etc.....	25
Diving, Aqua skiing, Aquaplaning, Para boating. ....	25
Organised Events .....	26
Charges & Payment.....	27
Charges.....	27
Payment .....	27



## Part 1 – Introduction

### Welcome

Shetland being the most Northerly point in the UK is a popular destination for tourists arriving by leisure craft. With its seemingly endless coastline to explore, this guide will help to keep you safe should you wish to visit any of our ports.

Shetland Islands Council owns and operates many ports around Shetland. With local amenities and facilities described in Part 2, this guide can point you in the right direction, whether you're a resident out exploring or just here visiting.

Our ports range from larger Commercial ports with multiple quays and piers, down to small ports with single quays or piers. Whether in our larger ports or our smallest, certain requirements and regulations will apply to you. Navigating your way through local, national and international legislation can be a minefield! This guide will help to not only keep you safe, but also legal while you're in our Ports and Harbour areas.

Shetland Island Council are the Harbour Authority for all of the ports that are listed in Part 2 of this guide. This means that while you are in one of our Harbour areas, whether you are tied up alongside, at a mooring or under way, you will be within the Councils jurisdiction. While you are in our Harbour areas, we will do all we can to help keep you and other port users safe so that you can go on exploring and enjoying your trip.

We help to keep all of our port users safe, by implementing and enforcing local byelaws and harbour directions. These must be followed at all times while in our Harbour areas.

In Part 3 of this guide, you can find a useful and easy to read summary of the directions that will apply to you while visiting any of our Ports and Harbours.

Help us, to help you stay safe.



**SHETLAND**  
ISLANDS COUNCIL

## Part 2 – Ports & Facilities



**SHETLAND**  
ISLANDS COUNCIL

# Hamnavoe

## Location

The port of Hamnavoe is situated on the West Coast of Shetland in the Isle of Burra at 60°06'.32N 001°20'.35W. With public access walks and Islands to explore, Hamnavoe makes a fantastic base.

## Amenities & Facilities

The village shop is located at the head of the pier where all your grocery essentials can be found. Petrol and Diesel can be bought from the local garage approximately 1 mile from the pier. For any other needs, a local bus service runs from Hamnavoe to Scalloway where connections can be made into Lerwick and the rest of Shetland. Full information can be found on the ZetTrans website.

## Mooring

There is 75m of berthage available at our pier and a minimum depth alongside of 3.4m. The tidal range at Hamnavoe is approximately 0.5m and the approximate time of high water at Hamnavoe can be found by taking the time of High Water Lerwick and subtracting 1 Hour & 50 minutes.

A marina is located within the Hamnavoe Harbour area, which is independent from the Harbour Authority.

## Navigation

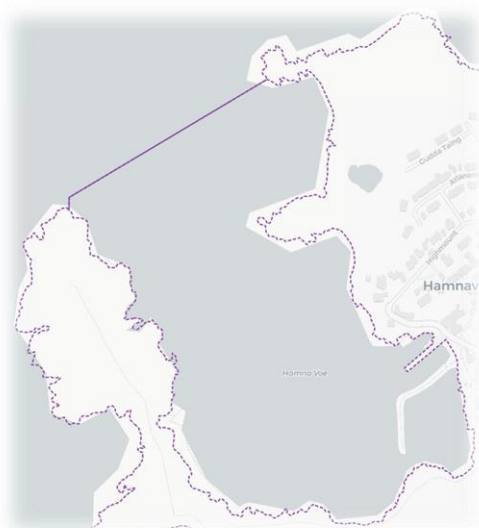
Although a commercially quiet port, many local fishermen use Hamnavoe as their home port for small fishing vessels. You can expect to see them coming in and out as they head out to fish for the day. Hamnavoe is also in the approaches to Scalloway Harbour. You might see larger fishing or commercial vessels using the channel into Scalloway Harbour. If you come across any larger vessels remember, as a small vessel you are required to keep out of the way of large vessels, who may not be able to navigate safely, outside of the channel.

## In depth information

- Admiralty Sailing Directions, NP52 Chapter 6.45
- Admiralty Chart 3294
- <https://www.shetland.gov.uk/ports/small-ports-information/3>
- <https://www.zettrans.org.uk/>



**SHETLAND**  
ISLANDS COUNCIL



Extent of Hamnavoe Harbour area

# Blacksness (Scalloway)

## Location

Blacksness (or Scalloway) Harbour is on the west coast of the Shetland mainland in position 60°08.0'N 001°18.3'W. Scalloway is a natural harbour which has made it a popular choice for those looking for shelter.

## Amenities & Facilities

With Shetlands capital of Lerwick nearby, Scalloway is a great option for those who want to be close to the main town while still experiencing the quietness of a village. Scalloway benefits from a variety of amenities such as grocery shops, a pharmacy, restaurants, café's and a pub. Fresh water and bunkers are available at the harbour and any repairs can be arranged through local contractors. For anything you can't find in Scalloway, Lerwick is just a short 6 mile journey away, accessible by a regular bus service.

## Mooring

There are multiple berths that may be available for you at our piers in Scalloway with minimum depths alongside ranging from 3.5m up to 7.0m.

2 separate marinas and a pontoon are located within the Harbour area, which are independent from the Harbour Authority.

Make sure to speak to the Harbour office before tying up here. The harbour office can be contacted on VHF channel 14 or by phoning +44 (0)1595744221

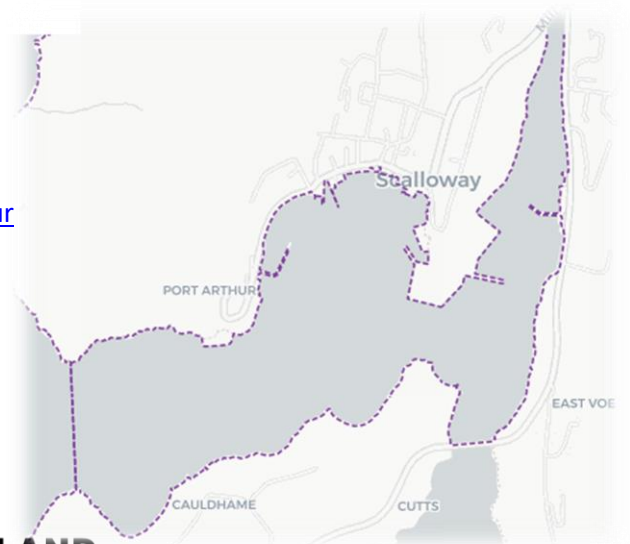
## Navigation

Scalloway is a relatively busy commercial and fishing port with a range of harbour users which range from small leisure craft, to fishing boats or larger commercial ships. There is a buoyed channel that runs into Scalloway Harbour, which larger ships may not be able to depart from. If you come across any larger vessels remember, as a small vessel you are required to keep out of the way of large vessels, who may not be able to navigate safely, outside of the channel.

## In depth information

More in depth information can be found in following:

- Admiralty Sailing Directions, NP52 Chapter 6.49
- Admiralty Chart 3294
- <https://www.shetland.gov.uk/scalloway-harbour>
- <https://www.zettrans.org.uk/>



**SHETLAND**  
ISLANDS COUNCIL

Extent of the Blacksness Harbour area



## Vaila Sound (Walls)

### Location

Walls pier is on the West coast of the Shetland mainland in position 60°13'N 001°34'W. Sheltered by the isle of Vaila it offers a quiet safe haven to those visiting.

### Amenities & Facilities

Walls is a picturesque, quiet village. There is a small community shop with fuel pumps and bakery in the centre of village where you can buy your essential groceries. For those who may want to explore, there are public access walks around the village and its surroundings.

### Mooring

There is 150m of berthage across multiple berths that may be available for you at our pier. Minimum depths alongside range from 3.0m up to 7.0m. The tidal range is approximately 1.5m and the approximate time of high water at Vaila Sound can be found by taking the time of High Water Lerwick and subtracting 2 Hours.

There is a marina within the Harbour area, which is independent from the Harbour Authority.

### Navigation

Walls is a quiet port but you may come across some mussel farms and their work boats. Keep an eye out for the special marks which indicate the position of the mussel farms and try to give them a wide berth.

### In depth information

More in depth information can be found in following:

- Admiralty Sailing Directions, NP52 Chapter 6.73
- Admiralty Chart 3295
- <https://www.shetland.gov.uk/ports/small-ports-information/4>
- <https://www.zettrans.org.uk/>



Extent of the Vaila Sound Harbour area



**SHETLAND**  
ISLANDS COUNCIL



# West Burrafirth

## Location

West Burrafirth lies on the west coast of the Shetland mainland, at the Southern end of St Magnus Bay in position 60°17'N 001°32'W. Well sheltered from southerly winds, West Burrafirth is a great choice for experiencing rural Shetland.

## Amenities & Facilities

West Burrafirth is a prime example of Shetlands rural landscape. Amenities and Facilities are limited here, however at the pier you can find public toilets, showers, fresh water and a pay phone. Fuel and stores deliveries can be arranged by road. A ferry runs from West Burrafirth to the nearby island of Papa Stour and a limited feeder bus service runs on a “dial a ride” system, from West Burrafirth to the Capital, Lerwick. Full information can be found on the ZetTrans website.

## Mooring

There is 100m of berthage that may available at West Burrafirth over various berths with minimum depths ranging from 2.5m to 5.0m. There is approximately 1.6m rise and fall in the tide and the approximate time of high water at West Burrafirth can be found by taking the time of High Water Lerwick and subtracting 1 Hour & 55 minute.

## Navigation

Although a quiet and rural area of Shetland, West Burrafirth can at times be a busy little port. You can expect to see local fishermen, the Papa Stour ferry and work boats that tend the nearby salmon farms. It is worth being mindful of the navigational constraints these other vessels may have compared to you.

## In depth information

More in depth information can be found in following:

- Admiralty Sailing Directions, NP52 Chapter 6.104
- Admiralty Chart 3299
- <https://www.shetland.gov.uk/ports/small-ports-information/5>
- <https://www.zettrans.org.uk/>



## Collafirth

### Location

Collafirth is a small port within the Sullom Voe Harbour limits. It is located in the North of Yell Sound in position 60°32'N 001°20'W. With beautiful coastal scenery and popular hiking spots nearby such as Eshaness, Ronas hill & Fethaland, Collafirth is a great base to explore the Northmain area.

### Amenities & Facilities

Fresh water and shore power is available at Collafirth and for any supplies, the small village of Ollaberry is approximately 4 miles away and has a small community shop. If you can't find what you need in Ollaberry, the village of Brae is just under 13 miles from Collafirth and has a small supermarket, hardware store, pharmacy and leisure centre. A bus service runs from the nearby village of North Roe, through Brae and onto the capital, Lerwick. Information can be found on the ZetTrans website.

### Mooring

There is 100m of berthage that may be available at Collafirth over various berths with minimum depths ranging from 5.0m to 6.0m. There is a maximum tidal range of approximately 1.9m and the approximate time of high water at Collafirth can be found by taking the time of High Water Lerwick and subtracting 1 Hour & 30 minutes.

An independent marina can be found within Collafirth Harbour which is not owned or operated by Shetland Islands Council

### Navigation

The entirety of Yell Sound is monitored and controlled by Sullom Voe VTS (Vessel Traffic Service). The Northern limit of the VTS area runs from the point of Fetherland on the Shetland Mainland, to Fogla Lee on the Isle of Yell. The South Eastern limit of the VTS runs from the Mossbank pier on the Shetland mainland, around the Isles of Samphrey and Orfasay and to the Ness of Copister on the Isle of Yell. It is requested that small vessels such as call Sullom Voe VTS on VHF ch. 14 when entering and leaving the VTS area.

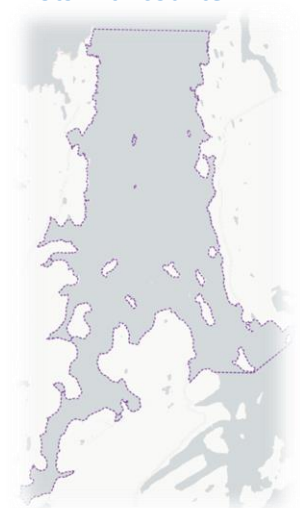
You may see large vessels arriving and departing. Please remember, you have a legal obligation to stay out of the way of large vessels who can only navigate safely, within the fairway.

It is recommended that you carefully consult the tide tables and tidal stream atlas prior to sailing through this stretch of water. Currents in places can often reach over 6 knots with counter currents running between the isles.

### In depth information

More in depth information can be found in following:

- Admiralty Sailing Directions, NP52 Chapter 6.264
- Admiralty Chart 3298
- <https://www.zettrans.org.uk/>
- <https://www.shetland.gov.uk/ports/small-ports-information/6>



**SHETLAND**  
ISLANDS COUNCIL

Extent of the Sullom Voe Harbour area

## Toft

### Location

Toft is a small port within the Sullom Voe Harbour limits. It is located in the middle of Yell Sound in position 60°28'N 001°12'W.

### Amenities & Facilities

Fresh water is available at toft and public toilets can be found at the ferry waiting room. A passenger ferry runs from Toft to the island of Yell and a bus service to Lerwick. The ferry and bus timetable can be seen on the ZetTrans website.

### Mooring

There is approximately 122m of berthage available at Toft with minimum depths ranging from 5.5m on the outside of the pier, to 4.5m on the inside. Toft is a busy pier which is used predominantly by workboats servicing nearby aquaculture farms. This can mean that space is sometimes limited, especially on days of poor weather. There is also a finger pier at Toft which is used exclusively by the interisland ferries which run between Toft and Ulsta on the island of Yell.

### Navigation

The entirety of Yell Sound is monitored and controlled by Sullom Voe VTS (Vessel Traffic Service). The Northern limit of the VTS area runs from the point of Fetherland on the Shetland Mainland, to Fogla Lee on the Isle of Yell. The South Eastern limit of the VTS runs from the Mossbank pier on the Shetland mainland, around the Isles of Samphrey and Orfasay and to the Ness of Copister on the Isle of Yell. It is requested that small vessels such call Sullom Voe VTS on VHF channel 14 when entering and leaving the VTS area.

You may see large vessels arriving and departing Sullom Voe. Please remember, you have a legal obligation to stay out of the way of large vessels who can only navigate safely, within the fairway.

It is recommended that you carefully consult the tide tables and tidal stream atlas prior to sailing through this stretch of water. Currents in places can often reach over 6 knots with counter currents running between the isles.

### In depth information

More in depth information can be found in following:

- Admiralty Sailing Directions, NP52 Chapter 6.273
- Admiralty Chart 3298
- <https://www.zettrans.org.uk/>
- <https://www.shetland.gov.uk/ports/small-ports-information/12>



**SHETLAND**  
ISLANDS COUNCIL

Extent of the Sullom Voe Harbour area

## Mid Yell

### Location

Mid Yell pier as its name suggests, is located in the middle of the Island of Yell in position 60°36'N 001°03'W. Mid Yell sits in a large sheltered voe which makes it an ideal stop to shelter from the weather. It is also the largest village in the Island of Yell and is an ideal stop for exploring the island.

### Amenities & Facilities

Fresh water is available at the pier and the local village offers a shop and a boating club. There is a limited bus service that runs from Mid Yell, full information for which can be seen on the ZetTrans website.

### Mooring

Mid Yell pier is a finger pier which has a total of 90m of berthage available. Minimum depths alongside the pier range from 1.5m to 2.4m. The tidal range here is approximately 1.8m and the approximate high water time for Mid Yell can be found by taking high water Lerwick and subtracting 25 minutes.

There is a marina located at Mid Yell which is independent of the Harbour Authority.

### Navigation

Mid Yell is a small and relatively quiet harbour although you may see some aquaculture or small fishing vessels operating out of Mid Yell voe. Keep an eye out for fishing buoys and mussel farms as you sail through Mid Yell voe and give them as wide a berth as is safe.

If you decide to visit the marina, be aware of a sandbank off of Gardiestaing (see chartlet) If safe to do so, keep to the middle of the Voe to avoid the sandbank. Keep it in mind when entering or departing the marina.

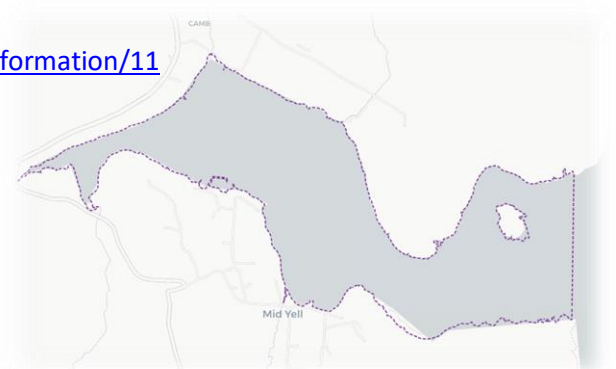


Approximate area of Sandbank outlined in RED – Chartlet not to be used for navigation

### In depth information

More in depth information can be found in following:

- Admiralty Sailing Directions, NP52 Chapter 6.306
- Admiralty Chart 3292
- <https://www.shetland.gov.uk/ports/small-ports-information/11>
- <https://www.zettrans.org.uk/>



**SHETLAND**  
ISLANDS COUNCIL

Extent of the Mid Yell Harbour area

## Cullivoe

### Location

Cullivoe is a small but busy port at the north end of the Island of Yell in position 60°42'N 001°00'W. Close to the islands of Unst & Fetlar, this is a great place to explore the far North of Shetland and the UK.

### Amenities & Facilities

Fuel, Ice, stores and engineering facilities are all available at the pier. There is also a local shop which is approximately a 20 minute walk from the pier. There is a limited bus service that runs from Cullivoe, full information for which can be seen on the ZetTrans website.

### Mooring

Cullivoe has quays and a finger pier all of which is well sheltered by a break water. 250m of berthage is available at Cullivoe with depths up to 6m at the Pier itself. The tidal range here is approximately 2.0m and the approximate high water time can be found by taking high water Lerwick and subtracting 1 hour 45 minutes.

There is a marina within the harbour area which is independent of the Harbour Authority.

### Navigation

Cullivoe is the busiest of the Council's small ports, with fishing and aquaculture vessels using the pier daily. A ferry service also runs between the nearby ports of Gutcher - Belmont and occasionally runs into Cullivoe. Keep a good eye out for other water users and fishing bouys floating on the water surface.

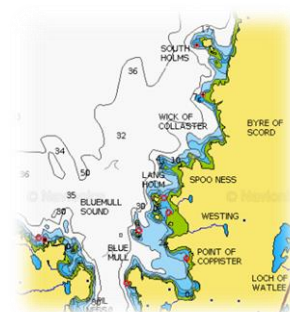
There are powerful tidal streams running through Bluemull Sound and past the entrance to Cullivoe. These can often reach up to 6 Knots. It is wise to make sure that you are comfortable with counteracting the effects of current before navigating this area! It is also a good idea to check the tide tables and tidal stream atlas for this area before navigating it, or you might find yourself being pushed and pulled in the wrong direction!

The Northern approaches to Bluemull Sound have a number of rocks and shallows off of the west coast of Unst. Make sure you are aware of these if transiting this area. See chartlett for reference.

### In depth information

More in depth information can be found in following:

- Admiralty Sailing Directions, NP52 Chapter 6.309
- Admiralty Chart 3292
- <https://www.shetland.gov.uk/ports/small-ports-information/7>
- <https://www.zettrans.org.uk/>



Northern Approach to Cullivoe  
– Chartlett not to be used for navigation



Extent of the Cullivoe Harbour area



**SHETLAND**  
ISLANDS COUNCIL

# Uyeasound

## Location

Uyeasound is a small port at the South end of the Island of Unst in position 60°41'N 000°50'W. Well sheltered by the island "Uyea", Uyeasound is an Ideal natural Harbour with plenty to Explore.

## Amenities & Facilities

Uyeasound is a small village with limited amenities, however why not take advantage of this quiet, rural location to explore the beautiful coastline by boat or by foot!

## Mooring

Uyeasound has quays which supply 230m of berthage with minimum depths of 3.5m. The tidal range here is approximately 2.0m and the approximate high water time can be found by taking high water Lerwick and subtracting 1 hour 35 minutes.

There are piers on both the east and west side of the voe, both of which are owned and operated by Shetland Island Council. A marina can be found on the east side of the voe which is privately owned and a third pier just south of the Harbour limits is also privately owned.

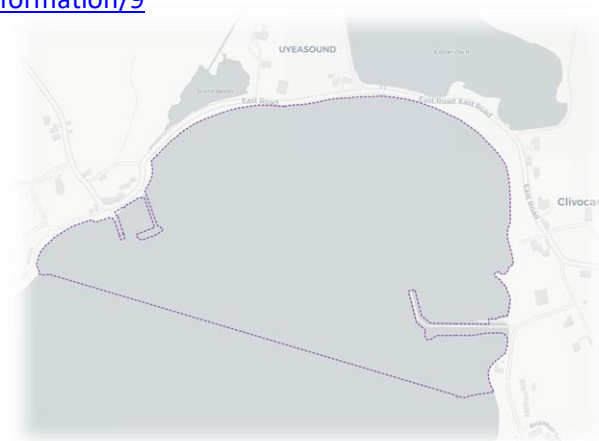
## Navigation

Uyeasound has a number of fish farms within and on the approaches to the harbour area. Keep an eye out for them and give them a wide berth if possible. You may also see workboats associated with the fish farms working out of Uyeasound. They are often involved in work activities that may make them restricted in their ability to manoeuvre, such as towing or diving operations. Be mindful of this when passing them.

## In depth information

More in depth information can be found in following:

- Admiralty Sailing Directions, NP52 Chapter 6.303
- Admiralty Chart 3292
- <https://www.shetland.gov.uk/ports/small-ports-information/9>
- <https://www.zettrans.org.uk/>



# Baltasound

## Location

Baltasound is at the heart of the Island of Unst in position 60°45'N 000°50'W. Its central location in Unst makes it's the perfect base to explore the island. The well sheltered voe sits behind the island of "Balta" on the East coast of Unst and is located in the largest village in Unst.

## Amenities & Facilities

Baltasound has good facilities including toilets, showers, fuel, travel links and a local shop. A leisure centre can be found in the village and during the summer, the harbour comes alive with regattas and fishing competitions.

## Mooring

Baltasound has a quay with approximately 160m of berthage with minimum depths of approximately 5.0m at the head of the pier. The harbour is used by commercial ships so quay space on the outside of the pier may be limited and it is therefore recommended that you tie up on the inside of the pier. The tidal range here is approximately 2.0m and the approximate high water time can be found by taking high water Lerwick and subtracting 45 minutes.

There is a marina next to the pier which is independent of the Harbour Authority.

## Navigation

Baltasound is can be a busy harbour for its size. There are aquaculture farms within the voe and you can expect to see workboats servicing the farms. A busy marine uses the harbour area with a mix of fishing a pleasure vessels. The harbour is also used by larger commercial vessels, exporting and importing goods. You may see a cargo ship delivering supplies to the nearby space station! Remember that when navigating in the harbour area, these larger vessels may not have as much room to manoeuvre as you do. Keep this in mind if you come across them.

## In depth information

More in depth information can be found in following:

- Admiralty Sailing Directions, NP52 Chapter 6.322
- Admiralty Chart 3299
- <https://www.shetland.gov.uk/ports/small-ports-information/8>
- <https://www.zettrans.org.uk/>



Extent of the Baltasound Harbour area



**SHETLAND**  
ISLANDS COUNCIL



# Hamarsness (Fetlar)

## Location

Hamarsness is located on the North West coast of the island of Fetlar in position 60°37.8'N 000°55.8'W. Fetlar is one of the North Isles of Shetland and a fantastic stop over whether exploring just Shetland or going further afield.

## Amenities & Facilities

Facilities are limited at Hamarsness itself however toilets can be found at the ferry waiting rooms. The local village of Houbie has a shop, post office and public hall. A passenger ferry runs from Hamarsness to the nearby islands of Unst and Yell.

## Mooring

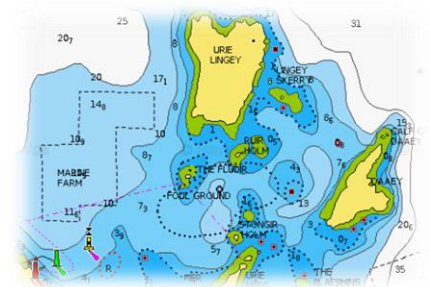
Hamarsness has a quay with approximately 47m of berthage with minimum depths of approximately 3.5m on the South face of the quay. There is a RORO ramp and jetty south of the quay which is used by the local interisland ferry and must be kept clear at all times by any other vessels.

## Navigation

Hamarsness is a small and quiet harbour but you may come across the interisland ferry.

The approaches to Hamarsness should be made by the North. To the North East of the harbour entrance lies the islands of Urie Lingey and Daaey. The water in-between these small isles is shallow and riddled with rocks which dry at low water. Keep an eye out for the west cardinal mark and keep to the West of this mark. See chartlett for reference.

Aquaculture farms are located in the approaches to Hamarsness.



Area NE of the harbour entrance  
– Chartlett not to be used for navigation

## In depth information

More in depth information can be found in following:

- Admiralty Sailing Directions, NP52 Chapter 6.302
- Admiralty Chart 3292
- <https://www.shetland.gov.uk/ports/small-ports-information/10>
- <https://www.zettrans.org.uk/>



**SHETLAND**  
ISLANDS COUNCIL



Extent of the Hamars Ness Harbour area

# Symbister

## Location

Symbister is a village in the island of Whalsay, off the East coast of Shetland mainland in position 60°21'N 001°02'W. Symbister is well located near Shetland central mainland but enjoying the benefits of small island rural living.

## Amenities & Facilities

Symbister is the largest village in the island of Whalsay and has good facilities including toilets, water, fuel, travel links and a local shop and post office.

## Mooring

Symbister has multiple quays and piers offering approximately 450m of berthage with minimum depths of approximately 5.0m at the piers. The harbour is used by many local fishing boats including a few large fishing boats, meaning space may be limited at times. The tidal range here is approximately 1.8m and the approximate high water time can be found by taking high water Lerwick and subtracting 15 minutes.

There is a marina next to the pier which is independent of the Harbour Authority.

## Navigation.

Symbister is a busy harbour with many fishing boats, work boats and ferries. Keep a good eye for other harbour users and keep in mind that larger vessels may have less room to manoeuvre than you.

Strong tides are often experienced North and South of the entrance to Symbister and care should be taken to take this into account when navigating.

## In depth information

More in depth information can be found in following:

- Admiralty Sailing Directions, NP52 Chapter 6.206
- Admiralty Chart 3284
- <https://www.shetland.gov.uk/ports/small-ports-information/14>
- <https://www.zettrans.org.uk/>



**SHETLAND**  
ISLANDS COUNCIL

Extent of the Symbister Harbour area

## North Haven (Fair Isle)

### Location

North Haven in the Island of Fair Isle, boasts being the most remote inhabited island in the UK. Half way between Orkney and Shetland, this small Island is world-renowned for its beauty, rural life style and bird watching. The Harbour is on the east coast of the island in position 59°32'N 001° 36'W and makes a perfect stop over on your way up to Shetland mainland, or a peaceful and perfect destination itself.

### Amenities & Facilities

Being such a rural location, amenities are limited here but that is more than made up for by its beauty and peaceful surrounding.

### Mooring

North Haven is a small harbour with approximately 80m of berthage available. Minimum depths alongside the quay are approximately 4.5m at but shallow quickly. There is a finger pier with a slipway to the south of the quay. This area should be kept clear as it is used by the local ferry.

The tidal range here is approximately 1.6m and the approximate high water time can be found by taking high water Lerwick and subtracting 10 minutes.

There is a marina next to the pier which is independent of the Harbour Authority.

### Navigation.

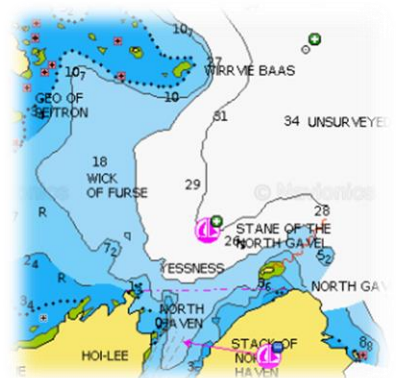
North Haven is popular with visiting yachts and cruise tenders during the summer months. The waters around the island (the Fair Isle Channel) is a busy shipping route where you can expect to see large cargo vessels. This area is also well known for strong tides and large seas, so be prepared for this before transiting the channel.

Much of the coast of Fair Isle is strewn with rocks and shallow areas, however most of these 1 ½ cables from the shore. Make sure to consult your chart if navigating around the coast line! When approaching the Harbour. Keep a good eye for the "Wirrvie Baas", a couple of rocks that lie approximately 400m north of the Harbour entrance (See chartlet)

### In depth information

More in depth information can be found in following:

- Admiralty Sailing Directions, NP52 Chapter 2.22
- Admiralty Chart 3299
- <https://www.shetland.gov.uk/ports/small-ports-information/15>
- <https://www.zettrans.org.uk/>



Wirrvie Baas, North of the Entrance – Chartlett not to be used for navigation



**SHETLAND**  
ISLANDS COUNCIL

Extent of the North Haven Harbour Area

## Out Skerries

### Location

Out Skerries is located off the East Coast of Shetland's Mainland in position 60°25'N 000°45'W. With its beautifully rugged scenery, it would make a perfect stop to experience rural island life

### Amenities & Facilities

Being a rural location with a small population, there are limited facilities here however, there are two shops in Out Skerries one of which includes a post office. Toilets, showers and waste disposal can be found at the nearby marina.

### Mooring

At the pier there is approximately 45m of berthage available. Minimum depths alongside the quay are approximately 5.0m. There is a RORO ferry pier which should be kept clear to allow access by the local ferry.

The tidal range here is approximately 1.8m and the approximate high water time can be found by taking high water Lerwick and subtracting 15 minutes.

There is a marina which is independent of the Harbour Authority.

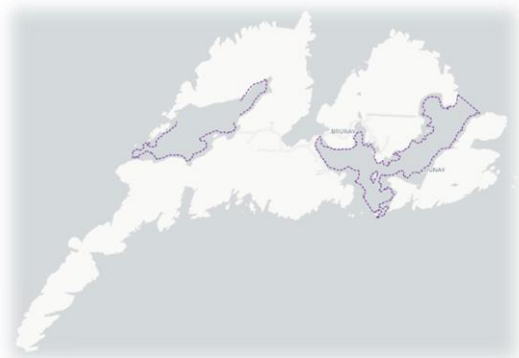
### Navigation

Traffic in Out Skerries is predominantly small fishing boats and the local ferry. There are two entrances to the harbour, the South Mouth and the Northeast Mouth. Details on how to make passage of either can be found in the Admiralty Sailing directions section 6.210 (4 & 5).

### In depth information

More in depth information can be found in following:

- Admiralty Sailing Directions, NP52 Chapter 6.210
- Admiralty Chart 3284
- <https://www.shetland.gov.uk/ports/small-ports-information/13>
- <https://www.zettrans.org.uk/>



Extent of the Out Skerries Harbour Area(s)



**SHETLAND**  
ISLANDS COUNCIL

## Part 3 – Safety & Regulations

The SIC has responsibilities for anyone who is using any of our Harbour Areas.

A harbour area, is an area which through an Act of parliament, the Harbour Authority is given defined powers and responsibilities for a defined area. These powers and responsibilities are all centred on keeping all harbour user(s) safe & protecting the environment.

The Piers and harbours for which the SIC have a defined harbour area are:

- Blacksness (Scalloway)
- Baltasound
- Symbister / North Voe
- Mid Yell Voe
- Cullivoe
- West Burra (Hamnavoe)
- Vaila Sound / Gruting Voe (Walls)
- Out Skerries (West Voe)
- Out Skerries (South and North-East Mouth)
- North Haven (Fair Isle)
- West Burrafirth
- UyeaSound
- Housa Voe - Papa Stour (no public pier located at Housa Voe)
- Hamars Ness (Fetlar)
- Collafirth (Sullom Voe Harbour area)
- Toft (Sullom Voe Harbour area)

This section applies at all times when in any of our SIC harbour areas.



**SHETLAND**  
ISLANDS COUNCIL

## Equipment, Stores & Planning

**Your Vessel** – Always have a check of your vessel to ensure it is seaworthy before you set off. Carry out basic engine checks such as fuel and oil levels and have a quick look over the general condition of your vessel.

Remember, from a large commercial vessel your pleasure craft may be very hard to spot both visually and by RADAR. Consider using a RADAR reflector or using bright colours to help other ships spot your vessel.

**Lifesaving equipment** – If you operate a vessel, then you may have a minimum carriage requirement for life saving equipment. Know what requirements apply to you. Even if there is no legal requirement for your vessel, consider what you might need if things go wrong. As a minimum, you should consider taking

- A flotation device for each person
- A means to communicate with the coastguard. Good options for this are,
  - VHF radio on channel 16
  - A mobile phone in a water proof carrier
- A means to identify your position in an emergency. Good options for this are,
  - What3Words mobile app – this is widely used by the UK emergency services
  - Red parachute flares (also known as rocket flares)
  - Red hand held flares
  - Orange smoke floats
  - Personal Locator Beacon(s)
  - A satellite navigation system which can provide a Latitude and Longitude. This can be given to the coastguard via phone or radio
- Warm & waterproof clothing

**Check the Weather and Plan your Trip** – Always remember to check the weather forecast before heading out on the water. The weather is extremely changeable in Shetland and it is easy to get caught out. Always plan and pack for a change in the weather, even if it is forecasted to be calm.

Some areas in Shetland can be quite difficult to navigate with fast flowing currents or treacherous coastlines. Know where about is safe for you and your vessel.

Lastly, it is always a good idea to let someone know when and where you are going and when you expect to be back.



## Navigation

Whether you live locally and are just heading out for some fun on the water, or are coming in from farther afield, there are local byelaws and harbour directions that will apply to you. Our byelaws are in place to allow all Harbour activities to be carried out safely within our Harbour areas & keep you safe while large vessels may be moving in the Harbour area.

**Know your Vessel** – The excitement of getting out on the water on a nice day can be great but remember, while out in our harbour areas you will have a responsibility to navigate with care. Get to know your vessel and the area in which you wish to take it. Think about how deep your vessel is in comparison to the water in which you are navigating. It can be an embarrassing and costly affair to run aground! It is also important to know the handling characteristics of your water craft. It is all too easy to be thrown overboard or injured by turning too fast, or when navigating through waves and swell.

**Watch your speed** – It is easy to get carried away and “put the sticks down” but please remember that while in our harbour area there is a speed limit of 5 knots. The speed limit ensures that all port users can respond to situations and if need be, stop their vessel within a safe distance. Lastly, remember that your wash can affect other users. Keep your wash to a minimum, especially when passing others.

**Keep a look out** – You are required by international regulations to keep an effective look out while out on the water. This means watching what is going on around you. Keep an eye on what other vessels are doing and where your vessel is in relation to them.

Much like when in your car, there are rules when out on the water that dictate which vessel has right of way, and who has to give way when there is a risk of collision. These rules (or regulations) are called The International Regulations for Preventing Collisions at Sea 1972 (as Amended). Ensure that you are familiar with these regulations before setting out.

Dangers to your vessel aren't only from other port users. It's important to keep an eye on where your vessel is in relation to navigational hazards. This could come in the form of shallow waters, rocks or floating debris. Many of our ports are home to local crab and lobster fishing boats (Known locally as “Creel” boats). Keep an eye out for fishing (or “creel”) buoys floating on the water surface. Keep clear of them, or you might wind up fouling your propeller!

**Don't obstruct the channels or fairways** – If you are navigating in or near harbour areas, there may be buoyed channels. Some large vessels can only safely navigate within the buoyed channel. For that reason, there are local and international regulations that require small craft, to not impede the safe passage of those larger vessels. Larger vessels also require a far greater time to stop or alter their course. Please bear in mind that if you impede their path, you may not only be breaking the law but could also be putting yourself in extreme danger!



**SHETLAND**  
ISLANDS COUNCIL



## Reporting

Whether you live locally or are a visitor, if you are using our Harbour Areas, reporting requirement may apply to you.

### Vessel Movements

- If you are arriving at one of our piers from the Channel Islands or from outside of the UK, you are required to contact the UK Border Force Officer to be granted clearance. Details of how to do this are found on our website – see link below

<https://www.shetland.gov.uk/ports/visiting-small-vessel-reporting/1>

Or on the National Yachtline UK Government web page, - see link below

<https://www.gov.uk/government/organisations/hm-revenue-customs/contact/national-yachtline>

- If you are not arriving from abroad, we request that you call:
  - Scalloway Harbour on VHF Ch.14 when entering / departing Scalloway Harbour
  - Sullom Voe VTS on VHF Ch.14 when transiting the Sullom Voe / Yell Sound area
  - All other SIC ports do not have VHF monitoring and there is therefore no requirement to report when transiting.

### Incidents & Observations

If you are involved in an incident in any of our harbour areas, you are required by byelaws to report it as soon as soon as practicable. Examples of incidents that you must report

- Collision
- Pollution
- Grounding
- Sunk / abandoned vessel
- Fire
- Defect
- Any occurrence which may cause a navigational hazard

If in doubt as to whether to report something, always report it to us.

Initial reports should be made to either:

Scalloway Harbour Office

VHF CH. 14

Tel:01595744221

Sullom Voe VTS

VHF CH.14

Tel:01806244280

Details of how to make Follow up reports can be found on our website – see link below

<https://www.shetland.gov.uk/ports/reporting>



**SHETLAND**  
ISLANDS COUNCIL

## Mooring

**Mooring safety** – If you are new to sailing, be sure to know how to safely handle a rope and how to effectively tie up your boat. Injuries can often occur when rope handling so know how to keep yourself and others safe. You are required by local byelaws to ensure that your water craft is safely and appropriately moored.

**Check the weather forecast** - Vessels can be moored alongside our piers, however with Shetlands changeable weather, always remember to ensure that your vessel is adequately fendered and moored even if the pier has it's own fenders. This will help to protect your vessel as well as our facilities.

**Only use dedicated bollards / mooring rings** – There are lots of areas at a pier that look good for tying up to. However please remember that you should only use dedicated bollards / rings for securing your vessel. Securing your boat to places like ladders or toe rails may look strong enough but it often leads to damage to our piers and to vessels.

**Safe access** – You are required by local byelaws to have and maintain safe access to your vessel when you are moored. If using access ladders at our piers, make sure that they are designated access ladders as opposed to emergency ladders. You can tell if it's an access ladder as it will have hand holds going above the height of the pier surface. Make sure not to obstruct escape ladders. You never know when they might be needed.

If it's busy, another vessel may wish to tie up alongside you. If this happens, you are required to provide safe access not only to your vessel, but also for people who may be crossing your deck.

**Anchoring** – If you are planning to anchor your vessel, keep in mind that some of our harbour areas require you to seek permission or is prohibited all together. If in doubt, contact us and ask.

When choosing a suitable spot to anchor make sure that it is not obscuring a channel or fairway that other harbour users may be using. Consider the direction / speed of the current and always check the upcoming forecast.



## Water Sports

So far, this guide has been aimed at Harbour users who are using some form of boat. This section is aimed at anyone wishing to use any of the Shetland Islands Council Harbour areas for any other kind of recreational activity. This could include;

- Swimming
- Kayaking or canoeing
- Paddle boarding
- Snorkelling
- Recreational diving
- Or any other activity which involves being on (or in) the water within a Harbour Area

The previous sections of part 3 may still be very relevant to you particularly if you are still using some form of water craft eg a kayak or canoe. Please read and consider all of section 3 prior to heading out, no matter what form of activity you are undertaking.

Swimming, Snorkelling and paddle boarding etc

If you're planning on being **in** the water rather than **on** the water, it may not be possible to carry some of the equipment suggested in Part 3. If this is the case, as a minimum you should always take the following precautionary measures

- Check the weather forecast before you go
- Always let someone know where you plan to go and how long you expect to be
- Have a means of raising the alarm if you run into trouble
- Always be aware of other harbour users and your surroundings

The Shetland Islands Council does not have any dedicated areas for swimmers. This means that anywhere in our Harbour Areas, you may encounter a boat or a ship. Due to this, our ports and harbour are generally not a suitable place for you to go wild swimming. If you are in the water, always remember that you may be extremely hard to spot from a passing boat or ship. Do what you can to make yourself as visible as possible and stay well out of the way.

Diving, Aqua skiing, Aquaplaning, Para boating.

These are all controlled activities within any of the SICs Harbour Areas. If you wish to undertake any of these activities within any of our Harbour Areas, you must contact the Harbour Authority prior to heading out.

- For any ports other than the Sullom Voe area, you should contact the Scallwoay Harbour Office on Tel: 01595744221
- For the Sullom Voe area, you should contact Sullom Voe VTS on Tel:01595744280



## Organised Events

Shetland Islands Council are committed to keeping all of our Harbour Users safe and as such we ask that you work together with us for your events. This could include but not limited to:

- Regattas,
- Tours involving multiple vessels or
- Organised charity events such as swims.

The Harbour Authority ask that the organiser of an event submits an event notification form to the Scalloway Harbour office or Sullom Voe VTS.

The notification will allow us to publish a “Local Notice To Mariners” informing other harbour users of your event. This will help to keep your participants safe.



**SHETLAND**  
ISLANDS COUNCIL

## Charges & Payment

When visiting any of our piers or Harbour Areas, charges (known as dues) will apply to you. These dues are used to pay for the upkeep of the ports, in order to keep you and other harbour users safe.

There are a number of options available to you.

### Pay per Entry

This option is charged by length of your water craft and covers you for visiting one of our piers for up to 4 days. You will be charged the same whether you stay for 1, 2, 3 or 4 days.

If you stay longer than 4 days, you will be charged a second time, again covering you for up to an additional 4 days.

If you visit a different pier while using this tariff, you will be charged again at the same rates.

### Monthly Rates

Yachts have the option to pay a set monthly rate which covers them to visit any of our piers as many times as they like within the calendar month.

### Minimum charge

There is a minimum charge that will be applicable to yachts visiting any of our piers

### Marinas

If you are visiting a marina located within one of our Harbour areas, you will need to contact the Marina who will advise you of their own charging systems.

## Charges

For full details, the table of dues can be found on the SICs website – see link below

<https://www.shetland.gov.uk/downloads/download/90/harbour-dues>

## Payment

### How to pay

Some of our piers have Pier Assistants who work for us. They can collect dues from you in cash or can take your details for invoicing. Details of how to pay an invoice can be found on the invoice when you receive it.

If you have paid for the monthly rate, the pier assistant will issue you with a receipt which should be kept available for inspection as long as it is valid.



**SHETLAND**  
ISLANDS COUNCIL