

SHETLAND ISLANDS COUNCIL Notice to Mariners



Notice to Mariners No 03-24 Sullom Voe – Survey Operations

Commencing from Wednesday 28th February - Fugro will be undertaking pipeline surveys in the Sullom Voe and Yell Sound Area.

Surveys will be carried out in day light hours only, by an Autonomous Underwater Vehicle. Workboat Ruby May will act as guard vessel.



Ruby May will be operating from the Toft Pier and deploying the AUV on site.

Surveys will be in the vicinity of Orca Voe, Swinister Voe, and Swining Voe. Chartlets indicating the survey areas are on the next page.

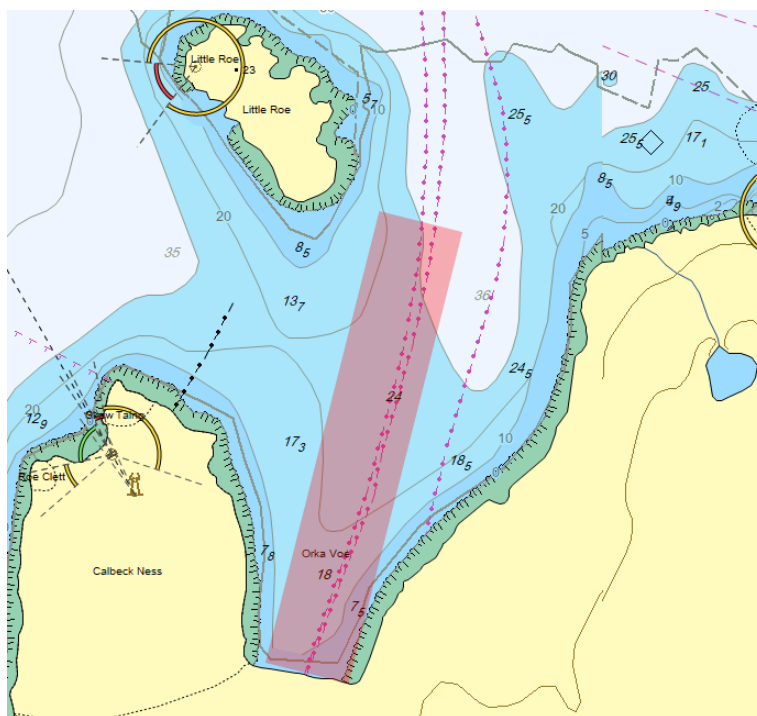
Mariners are requested to navigate with caution in the survey areas and to remain clear of the Ruby May.

A full list of current Local Notices to Mariners can be found at;
[Local Notices to Mariners – Shetland Islands Council](https://www.shetland.gov.uk/downloads/download/1504/local-notices-to-mariners)

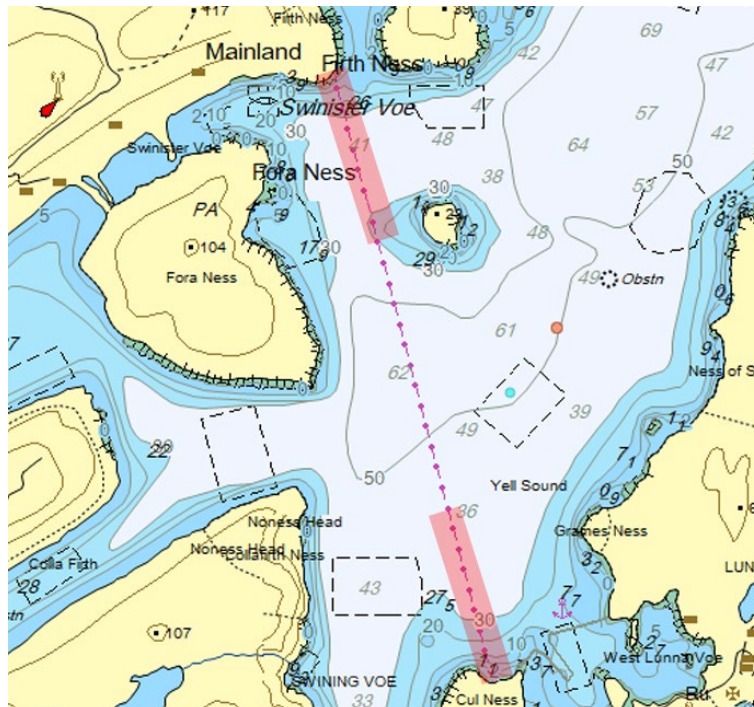
<https://www.shetland.gov.uk/downloads/download/1504/local-notices-to-mariners>

Ports and Harbours Operations
Shetland Islands Council

SHETLAND ISLANDS COUNCIL Notice to Mariners



Survey Location in Orca Voe



Additional survey areas in the vicinity of Swinister and Swining Voes outwith the Sullom Voe Harbour Limits